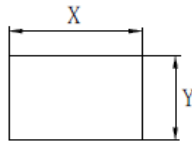


Approval & Rating:

| Rating | Approval |
|------------------------------|----------|
| 5/80A 250VAC~T85/55 | |
| 10A 250VAC 16A 125/250VAC | |
| TV-5 125VAC | |



PANEL CUTOUT DIMENSION:
(面板安裝孔開口尺寸)



| PANEL THICKNESS | X | Y |
|-----------------|---|---|
| | | |
| | | |
| | | |

Electrical(電氣性能):

(接觸電阻) INITIAL CONTACT RESISTANCE: 20Ω Max

(操作力量) OPERATION FORCE: 500±200gf

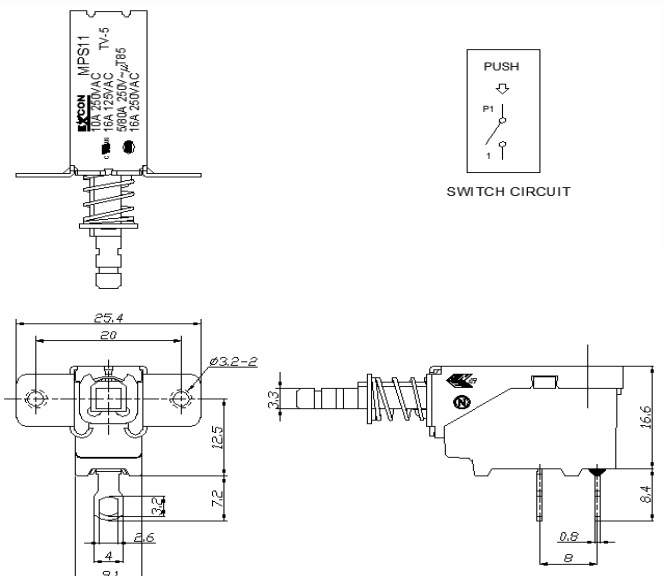
(絕緣電阻) INSULATION RESISTANCE: 100mΩ Min 500VDC

(電氣壽命) ENDURANCE: 10,000 CYCLES

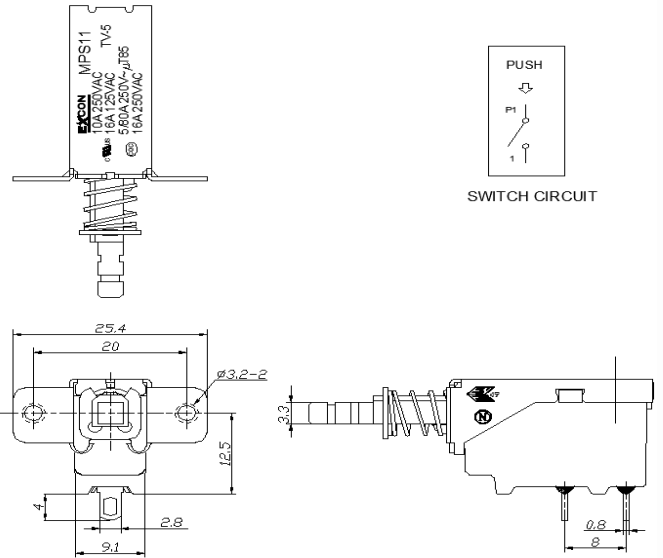
SPEC DRAWING(規格圖面)

Unit: mm

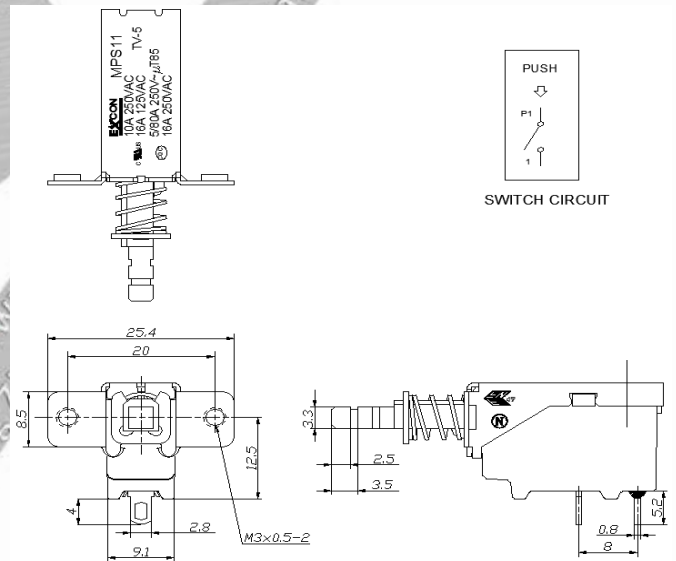
MPS11-HL180-3-R



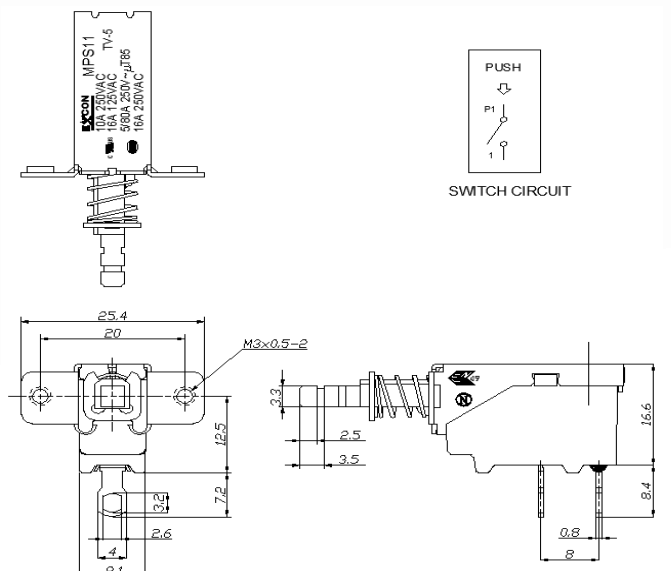
MPS11-HS180-R



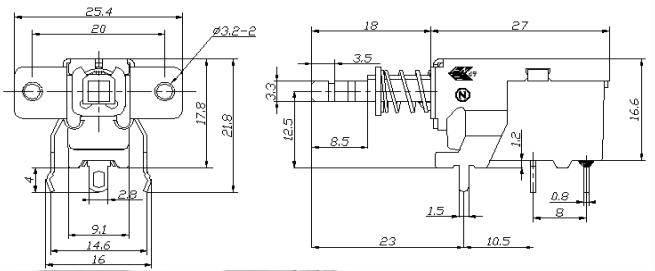
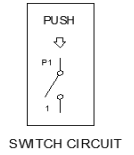
MPS11-MS180-R



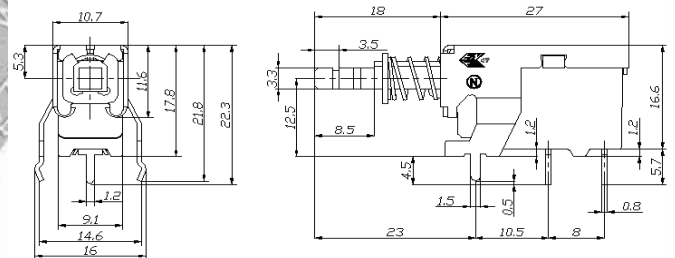
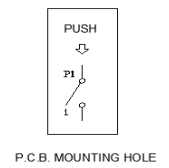
MPS11-ML180-R



MPS11-IS180-R



MPS11-PC180-R



89, Xing Long Road, Ping...

HOW TO ORDER(採購識別碼)

MPS11 SERIES ORDERING SYSTEM

MPS11 - M S 1 8 O - M 3 - R

MODEL NO.

| BRACKET TYPE | | | |
|--------------|-------------------------------|---|------------------------------|
| M | SCREW TYPE M3x0.5 | H | HOLE TYPE Ø3.2 |
| N | SCREW+PCB TYPE M3x0.5 | F | HOLE TYPE Ø3.5 |
| P | PCB TYPE TINNED SHEET IRON | J | SCREW TYPE M3x0.5/8A ONLY |
| I | HOLE+PCB TYPE Ø3.2 | B | PCB TYPE SPCC-SD |
| C | LONG PCB TYPE SPCC-SD | | |

| ACTUATOR LENGTH | |
|-----------------|--------|
| 18 | 18mm |
| 15 | 14.5mm |
| 11 | 11mm |

| OPERATING CODE | |
|----------------|-----------|
| M | MOMENTARY |
| | PUSH LOCK |

| RoHS DIRECTIVE | |
|----------------|---------------------|
| R | MEET RoHS DIRECTIVE |
| | NONE |

| TERMINAL TYPE | |
|---------------|-----------------------------------------------------|
| S | STANDARD TERMINAL SOLDERING TYPE (焊线孔 : 1.6X2.8) |
| C | PCB TYPE |
| L | LONG TERMINAL SOLDERING TYPE |
| A | STANDARD TERMINAL SOLDERING TYPE (焊线孔 : 1.8X3.0) |
| B | LONG PCB TYPE |

| ACTUATOR COLOR | |
|----------------|--------|
| O | ORANGE |

| OPERATING FORCE | |
|-----------------|-----------|
| | 500±200gf |
| 3 | 400±150gf |

