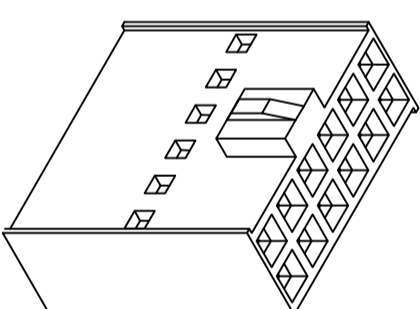
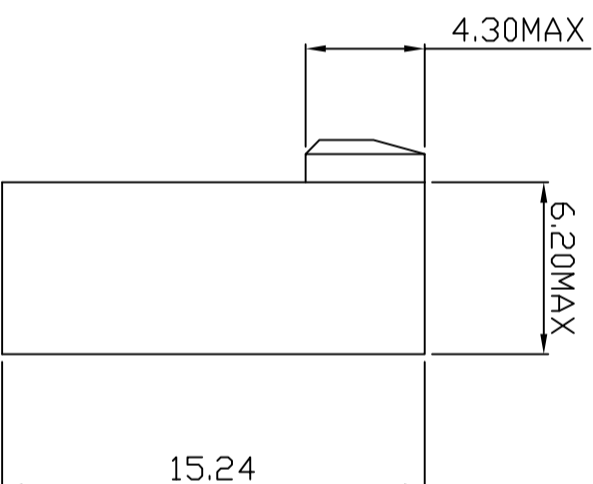
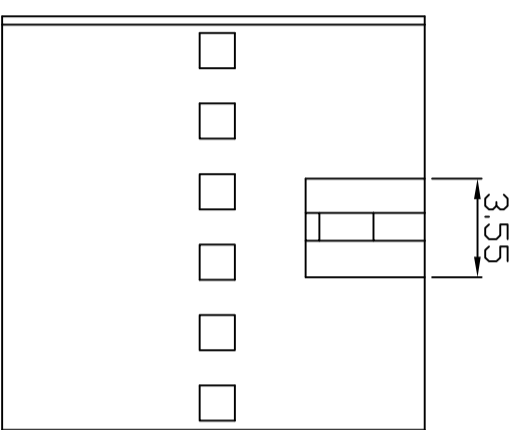
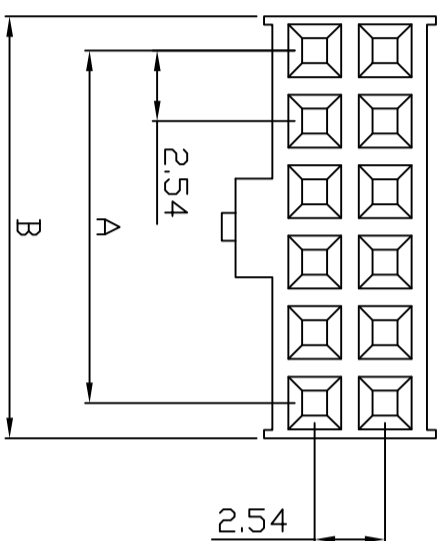


PART NO.  
8823xxHA298  
DWG NO.  
C8823HA



| Part No.    | Circuits | Dim A | Dim B |
|-------------|----------|-------|-------|
| 882306HA298 | 6        | 5.08  | 7.62  |
| 882308HA298 | 8        | 7.62  | 10.16 |
| 882310HA298 | 10       | 10.16 | 12.70 |
| 882312HA298 | 12       | 12.70 | 15.24 |
| 882314HA298 | 14       | 15.24 | 17.78 |
| 882316HA298 | 16       | 17.78 | 20.32 |
| 882318HA298 | 18       | 20.32 | 22.86 |
| 882320HA298 | 20       | 22.86 | 25.40 |
| 882322HA298 | 22       | 25.40 | 27.94 |
| 882324HA298 | 24       | 27.94 | 30.48 |
| 882326HA298 | 26       | 30.48 | 33.02 |
| 882328HA298 | 28       | 33.02 | 35.56 |
| 882330HA298 | 30       | 35.56 | 38.10 |
| 882332HA298 | 32       | 38.10 | 40.64 |
| 882334HA298 | 34       | 40.64 | 43.18 |
| 882336HA298 | 36       | 43.18 | 45.72 |
| 882338HA298 | 38       | 45.72 | 48.26 |
| 882340HA298 | 40       | 48.26 | 50.80 |
| 882342HA298 | 42       | 50.80 | 53.34 |
| 882344HA298 | 44       | 53.34 | 55.88 |
| 882346HA298 | 46       | 55.88 | 58.42 |
| 882348HA298 | 48       | 58.42 | 60.96 |
| 882350HA298 | 50       | 60.96 | 63.50 |
| 882352HA298 | 52       | 63.50 | 66.04 |
| 882354HA298 | 54       | 66.04 | 68.58 |
| 882356HA298 | 56       | 68.58 | 71.12 |
| 882358HA298 | 58       | 71.12 | 73.66 |
| 882360HA298 | 60       | 73.66 | 76.20 |
| 882362HA298 | 62       | 76.20 | 78.74 |
| 882364HA298 | 64       | 78.74 | 81.28 |

- NOTE:
1. Wafer Material: PP0 , PBT
  2. Insulation resistance: 1000M ohm/min.
  3. Withstand voltage: 1000V AC/minute.
  4. Current retang: 3A AC/DC.
  5. Voltage rating: 250V AC/DC

UNLESS OTHERWISE SPECIFIED TOLERANCES  
3 PLACE ±0.5 ±0.10  
2 PLACE ±1.5 ±0.25  
1 PLACE ±2.0 ±0.50  
ANGLE DIM

**EXCON**

EXCON TECHNOLOGY COMPANY

| REV. | REVISION | DIS | DATE |
|------|----------|-----|------|
|      |          |     |      |
|      |          |     |      |
|      |          |     |      |

| SCALE | REV. | PAGE | UNIT | THIRD ANGLE PROJECTION |
|-------|------|------|------|------------------------|
| 2/1   | A    | 1    | m/m  |                        |

DWG NO: C8823HA

PART.NO

8823xxHA298

10

9

8

7

6

5

4

3

2

1