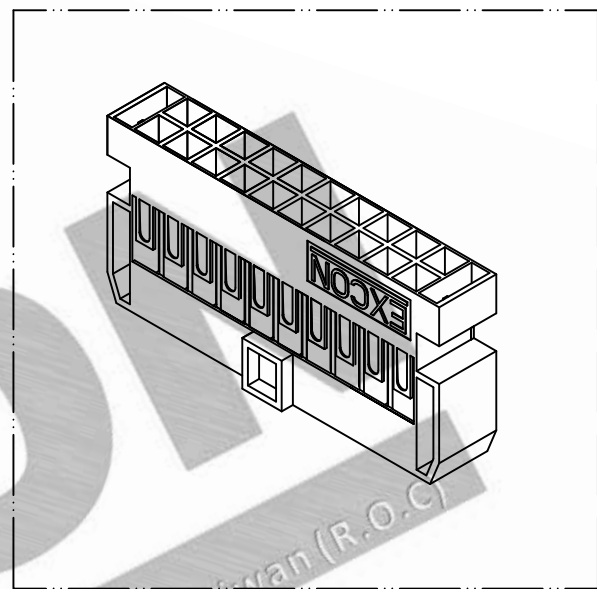
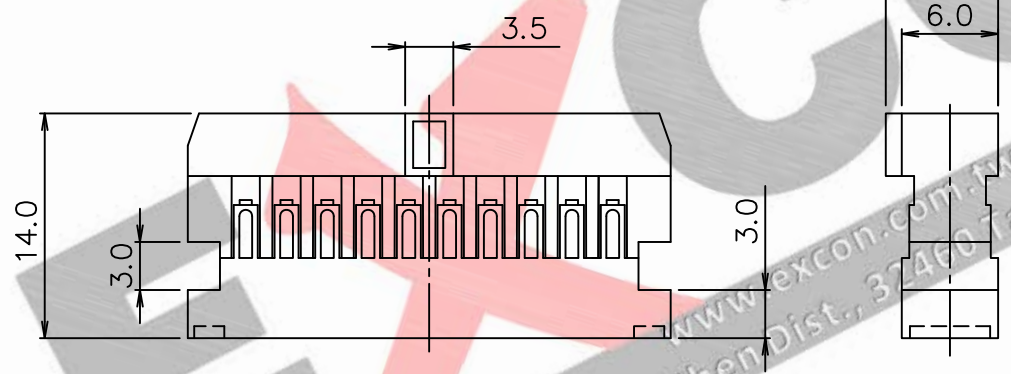
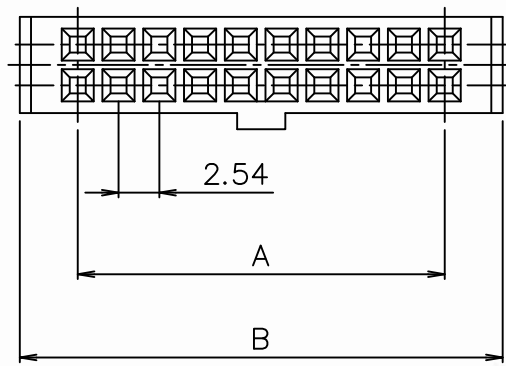


PART NO. 8820xxHA298
 DWG NO. C8820HA



NOTE:

1. Wafer Material: PPO , PBT
2. Insulation resistance: 1000M ohm/min.
3. Withstand voltage: 1000V AC/minute.
4. Current rating: 3A AC/DC.
5. Voltage rating: 250V AC/DC

Dimensional & Ordering Information:

Part No.	POS	A	B
882010HA298	10	10.16	17.38
882014HA298	14	15.24	22.46
882016HA298	16	17.78	25.00
882020HA298	20	22.86	30.08
882024HA298	24	27.94	35.16
882026HA298	26	30.48	37.70
882030HA298	30	35.56	42.78
882034HA298	34	40.64	47.86
882040HA298	40	48.26	55.48

REV.	REVISION	DIS	DATE
2/1	A	1	

UNLESS OTHERWISE SPECIFIED TOLERANCES
 3 PLACE ±0.5 ±0.10
 2 PLACE ±1.5 ±0.25
 1 PLACE ±2.0 ±0.50
 ANGLE DIM

SCALE: 2/1 UNIT: mm DWG NO: C8820HA

THIRD ANGLE PROJECTION

EXCON
 EXCON TECHNOLOGY COMPANY

PART.NO: 8820xxHA298