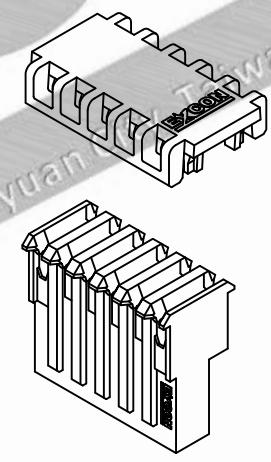
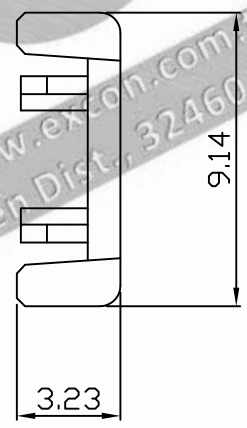
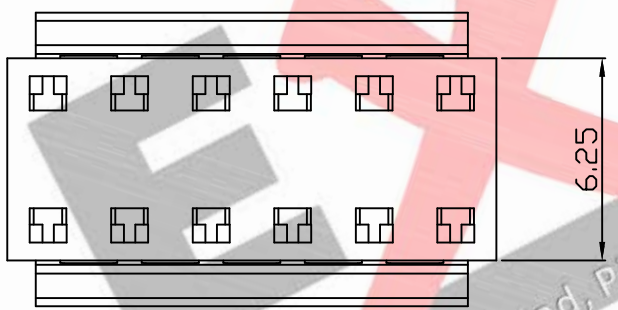
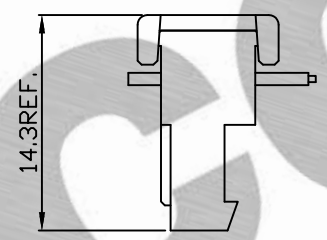
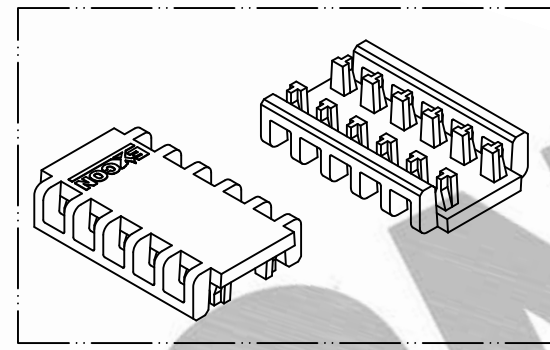
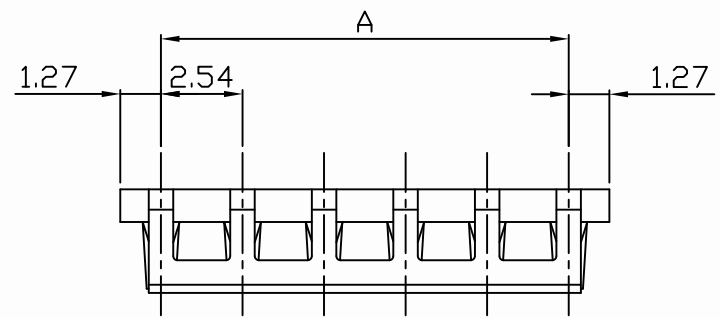


PART NO. 7804xxLB051  
 DWG NO. C7804LB



Dimensional & Ordering Information:

Part No.	Circuits	Dim A
780402LB051	2	2.54
780403LB051	3	5.08
780404LB051	4	7.62
780405LB051	5	10.16
780406LB051	6	12.70
780407LB051	7	15.24
780408LB051	8	17.78
780409LB051	9	20.32
780410LB051	10	22.86
780411LB051	11	25.40
780412LB051	12	27.94
780413LB051	13	30.48
780414LB051	14	33.02
780415LB051	15	35.56
780416LB051	16	38.10
780417LB051	17	40.64
780418LB051	18	43.18
780419LB051	19	45.72
780420LB051	20	48.26
780421LB051	21	50.80
780422LB051	22	53.34
780423LB051	23	55.88
780424LB051	24	58.42
780425LB051	25	60.96
780426LB051	26	63.50
780427LB051	27	66.04
780428LB051	28	68.58

NOTE:

1. Housing Material: Nylon 66 UL94V2
2. Color: Natural
3. Withstand voltage: 1500V AC/minute.
4. Current rating: 3A AC/DC.
5. Voltage rating: 250V AC/DC

UNLESS OTHERWISE SPECIFIED TOLERANCES  
 3 PLACE ±0.5 ±0.10  
 2 PLACE ±1.5 ±0.25  
 1 PLACE ±2.0 ±0.50  
 ANGLE DIM



REV.	REVISION	DIS	DATE
SCALE	REV.	PAGE:	UNIT
5/1	A	1	MM

DWG NO: C7804LB

PART.NO: 7804xxLB051

