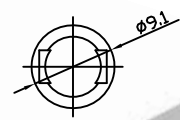
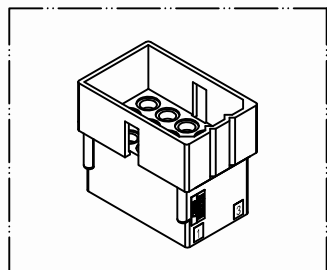
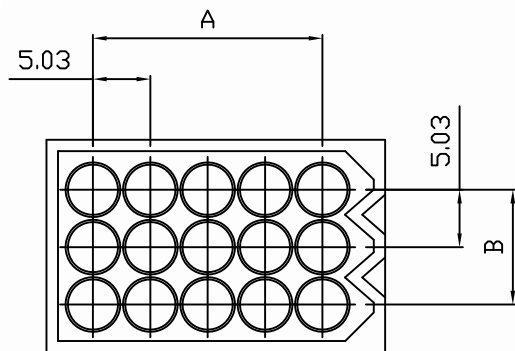


PART NO. 6607xxHF051
 DWG NO. C6607HF



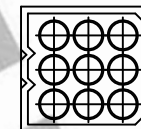
Part No.: 660701HF051



Part No.: 660706HF051



Part No.: 660702HF051

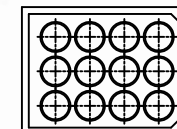


Part No.: 660703HF051

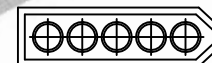
Part No.: 660709HF051



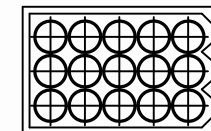
Part No.: 660704HF051



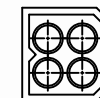
Part No.: 660712HF051



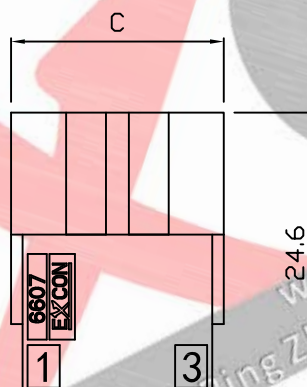
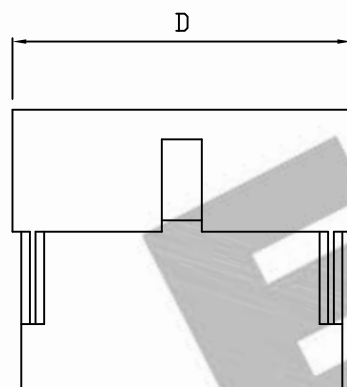
Part No.: 660705HF051



Part No.: 6607A4HF051



Part No.: 660715HF051



Dimensional & Ordering Information:

Part No.	Circuits	Dim A	Dim B	Dim C	Dim D
660702HF051	2	5.03	---	8.6	13.63
660703HF051	3	10.06	---	8.6	18.66
660704HF051	4	15.09	---	8.6	23.69
6607A4HF051	4	5.03	5.03	13.63	13.63
660705HF051	5	20.12	---	8.60	28.72
660706HF051	6	5.03	10.06	18.66	13.63
660709HF051	9	10.06	10.06	18.66	18.66
660712HF051	12	15.09	10.06	18.66	23.69
660715HF051	15	20.12	10.06	18.66	28.72

NOTE:

1. Wafer Material: Nylon 66 UL94 V2
2. Insulation resistance: 1000M ohm/min.
3. Withstand voltage: 1500V AC/minute.
4. Current retang: 5A AC/DC.
5. Voltage rating: 600V AC/DC
6. Color: Natural

UNLESS OTHERWISE SPECIFIED TOLERANCES
 3 PLACE ±0.5 ±0.10
 2 PLACE ±1.5 ±0.25
 1 PLACE ±2.0 ±0.50
 ANGLE DIM

EXCON
 EXCON TECHNOLOGY COMPANY

REV.	REVISIONI	DIS	DATE	DWG NO:	PART.NO
SCALE	REV.	PAGE:	UNIT	THIRD ANGLE PROJECTION	C6607HF
1/1	A	1/2			6607xxHF051