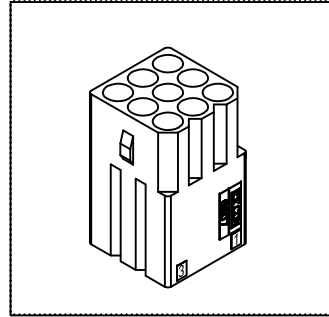
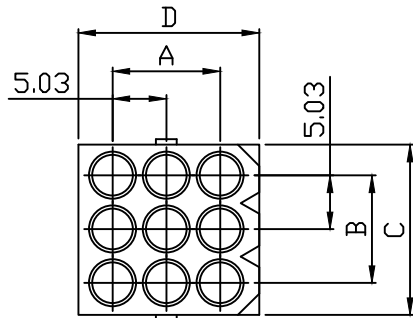
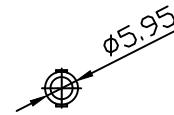
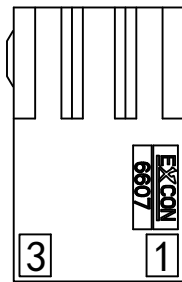
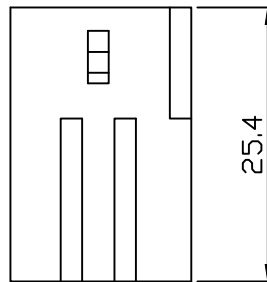


PART NO.
6607xx09HD051
DWG NO.
C6607HD



Dimensional & Ordering Information:

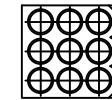
Part No.	Circuits	Dim A	Dim B	Dim C	Dim D
660702HD051	1	---	---	---	---
660702HD051	2	5.03	---	6.35	11.38
660703HD051	3	10.06	---	6.35	16.41
660704HD051	4	15.09	---	6.35	21.44
6607A4HD051	4	5.03	5.03	11.38	11.38
660705HD051	5	20.12	---	6.35	26.47
660706HD051	6	5.03	10.06	16.41	11.38
660708HD051	9	10.06	10.06	16.41	16.41
660712HD051	12	15.09	10.06	16.41	21.44
660715HD051	15	20.12	10.06	16.41	26.47



Part No.: 660702HD051



Part No.: 660705HD051

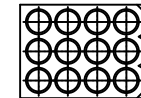


Part No.: 660709HD051

Part No.: 660702HD051



Part No.: 6607A4HD051



Part No.: 660712HD051

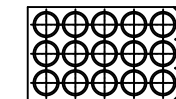
Part No.: 660703HD051



Part No.: 660704HD051



Part No.: 660706HD051



Part No.: 660715HD051

NOTE:

1. Housing Material: Nylon 66 UL94V2
2. Color: Natural
3. Withstand voltage: 1500V AC/minute.
4. Current rating: 5A AC/DC.
5. Voltage rating: 600V AC/DC

				UNLESS OTHERWISE SPECIFIED TOLERANCES		 EXCON TECHNOLOGY COMPANY
				3 PLACE ±0.5 ±0.10		
				2 PLACE ±1.5 ±0.25		
				1 PLACE ±2.0 ±0.50		
				ANGLE DIM		
REV.	REVISION			DIS	DATE	
SCALE	REV.	PAGE	UNIT	mm		DWG NO:
4/1	A	1	THIRD ANGLE PROJECTION			C6607HD
					PART.NO	
					6607xxHD051	