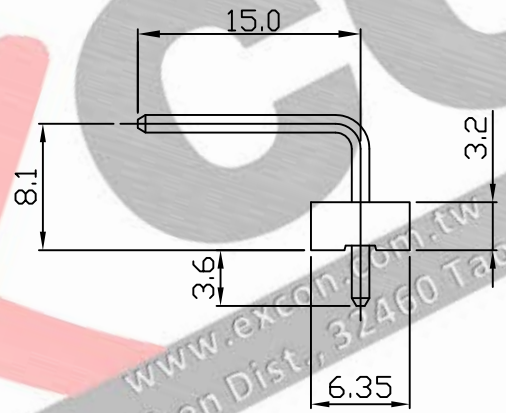
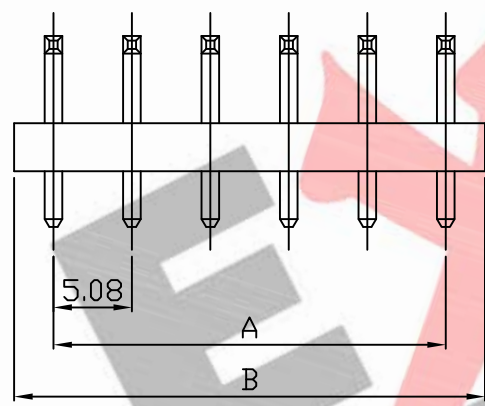
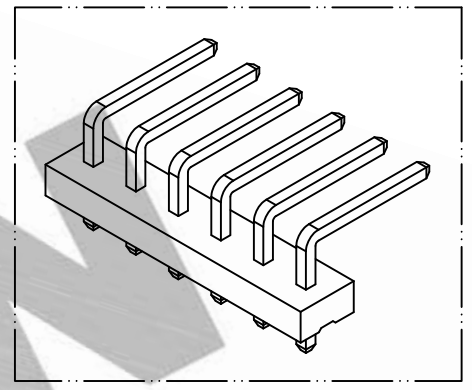
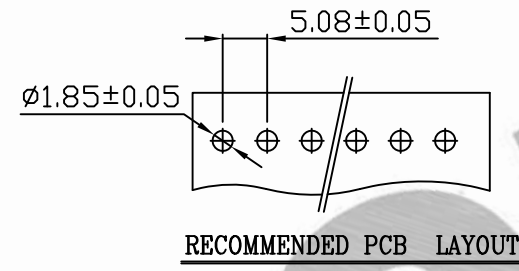
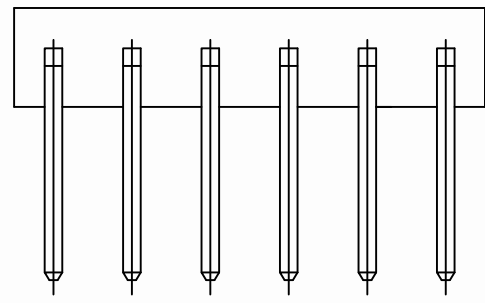


PART NO. 5087xxWB051
 DWG NO. C5087WB



Dimensional & Ordering Information:

Part No.	Circuits	Dim A	Dim B
508702WB051	2	5.08	10.16
508703WB051	3	10.16	15.24
508704WB051	4	15.24	20.32
508705WB051	5	20.32	25.40
508706WB051	6	25.40	30.48
508707WB051	7	30.48	35.56
508708WB051	8	35.56	40.64
508709WB051	9	40.64	45.72
508710WB051	10	45.72	50.80
508711WB051	11	50.80	55.88
508712WB051	12	55.88	60.96

NOTE:

1. Wafer Material: Nylon 66 UL94V-2
Pin/Pos Material: brass bronze.
2. Plated: Tin-plated 50u" min.
3. Insulation resistance: 1000M ohm/min.
4. Withstand voltage: 1500V AC/minute.
5. Current rating: 5A AC/DC.
6. Voltage rating: 250V AC/DC

				UNLESS OTHERWISE SPECIFIED TOLERANCES	
				3 PLACE ±0.5 ±0.10	
				2 PLACE ±1.5 ±0.25	
				1 PLACE ±2.0 ±0.50	
				ANGLE DIM	
REV.	REVISIONI			DIS	DATE
SCALE	REV.	PAGE:	UNIT	mm	
3/1	A	1/1	THIRD ANGLE PROJECTION		
				DWG NO: C5087WB	

EXCON

EXCON TECHNOLOGY COMPANY

PART.NO 5087xxWB051