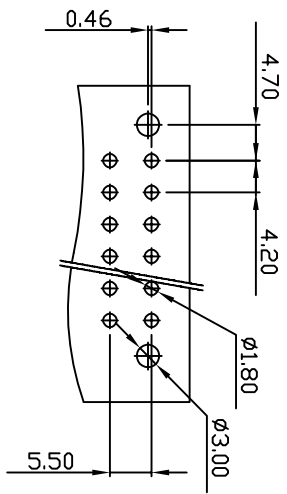
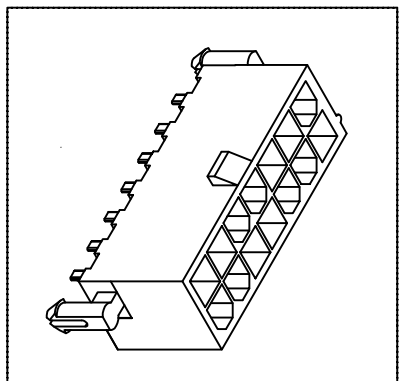
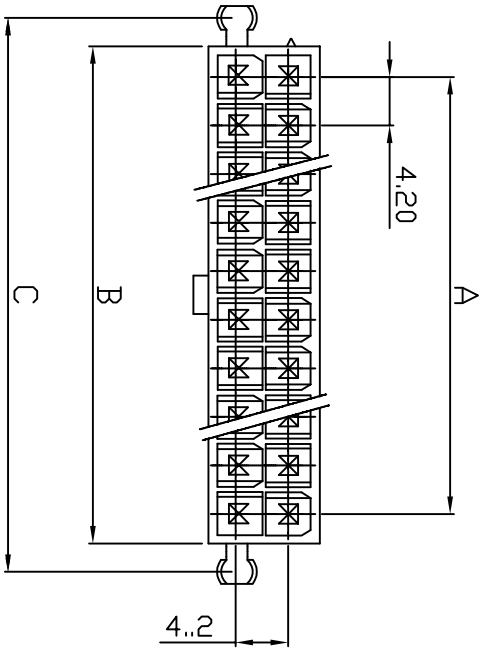


PART NO.
4201xxWS0xx
DWG NO.
C4201WS

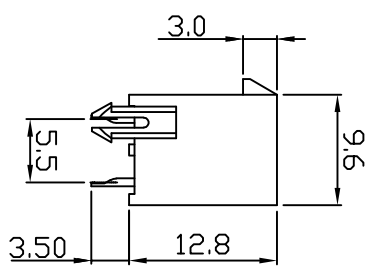
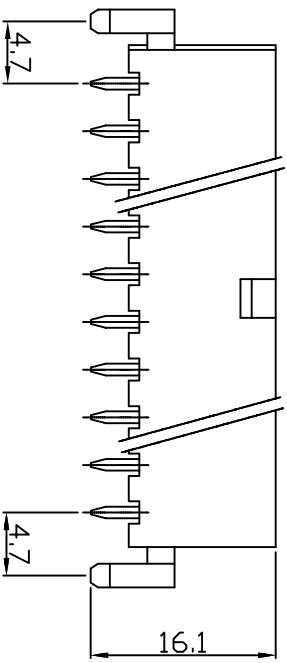


TOLERANCES ARE NON-CUMULATIVE:±0.05

RECOMMENDED PCB LAYOUT
(PCB THK=1.0~1.6)

NOTE:

1. Wafer Material: Nylon 66 UL94V2 or V0
2. Pin/Pos Material: brass bronze.
3. Plated: Tin-plated 50 μ m.
4. Insulation resistance: 1000M ohm/min.
5. Withstand voltage: 1500V AC/minute.
6. Current rating: 5A AC/DC.
7. Voltage rating: 600V AC/DC



Dimensional & Ordering Information:

Part No.	NY66 UL94V2	Circuits	A	B	C
NY66 UL94V0	NY66 UL94V2	2	5.4	9.4	9.4
420102WS001	420102WS051	4	4.2	9.6	13.6
420104WS001	420104WS051	6	8.4	13.8	17.8
420106WS001	420106WS051	8	12.6	18.0	22.0
420108WS001	420108WS051	10	16.8	22.2	26.2
420110WS001	420110WS051	12	21.0	26.4	30.4
420112WS001	420112WS051	14	25.2	30.6	34.6
420114WS001	420114WS051	16	29.4	34.8	38.8
420116WS001	420116WS051	18	33.6	39.0	43.0
420118WS001	420118WS051	20	37.8	43.2	47.2
420120WS001	420120WS051	22	42.0	47.4	51.4
420122WS001	420122WS051	24	46.2	51.6	55.6

UNLESS OTHERWISE SPECIFIED TOLERANCES
3 PLACE ±0.5 ±0.10
2 PLACE ±1.5 ±0.25
1 PLACE ±2.0 ±0.50
ANGLE DIM



EXCON TECHNOLOGY COMPANY

REV.	REVISION	UNIT	DIS	DATE
2/1	A	1	THIRD ANGLE PROJECTION	

SCALE	REV.	PAGE	UNIT	DWG NO.	PART NO.
2/1	A	1	m	C4201WS	4201xxWS0xx