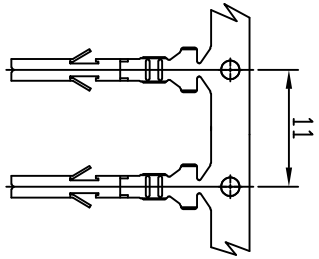
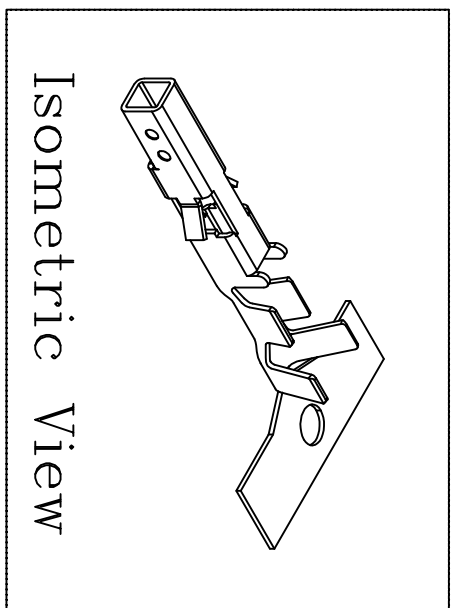
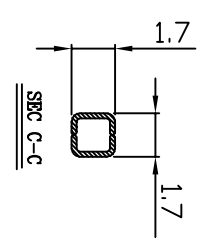
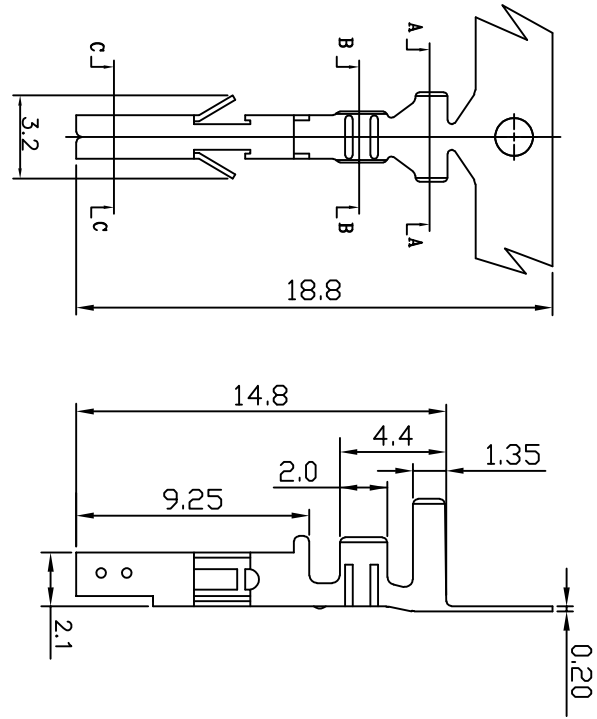


PART NO. 420100TY051
 DWG NO. C4201TY



NOTE:

1. Terminal Material: Brass bronze or Phosphor bronze
2. Plated: Tin pre-plated 50u"min.
3. Current rating: 5A AC/DC
4. Voltage rating: 600V AC/DC
5. Withstand voltage: 1500V AC/minute
6. Insulation resistance: 1000MΩ min
7. Insulation O.D.: 1.7~2.8mm
8. Q'ty / reel: 4,500pcs

No.	Part No.	Wire Range	Material	Finishing
1	420100TY051	AWG#16~#20	Brass	Tin pre-plated
2	420100TY351	AWG#16~#20	Phosphor	Tin pre-plated

UNLESS OTHERWISE SPECIFIED TOLERANCES
 3 PLACE ±0.5 ±0.10
 2 PLACE ±1.5 ±0.25
 1 PLACE ±2.0 ±0.50
 ANGLE DIM



REV.	DWG RELEASE	REVISION	UNIT	PROJECTION
C	DWG RELEASE		mm	Third Angle
4/1	D	1/1	THIRD ANGLE	PROJECTION

SCALE	REV.	PAGE:	UNIT	DWG NO:	PART NO
4/1	D	1/1	mm	C4201TY	420100TYx51