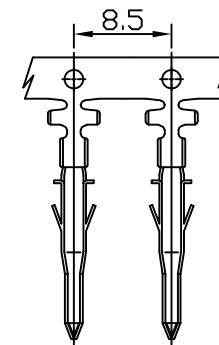
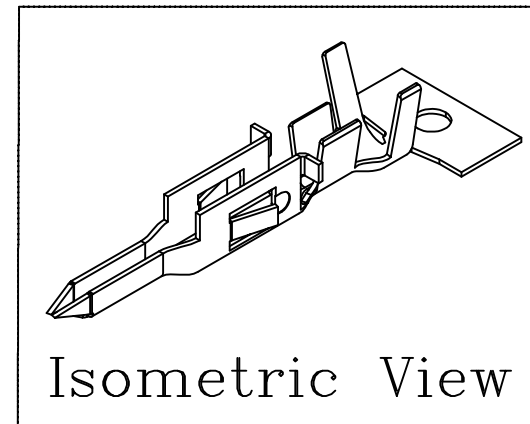
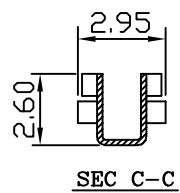
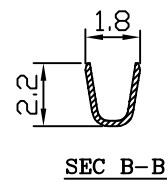
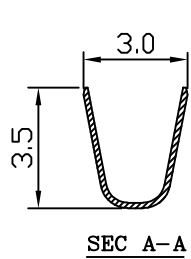
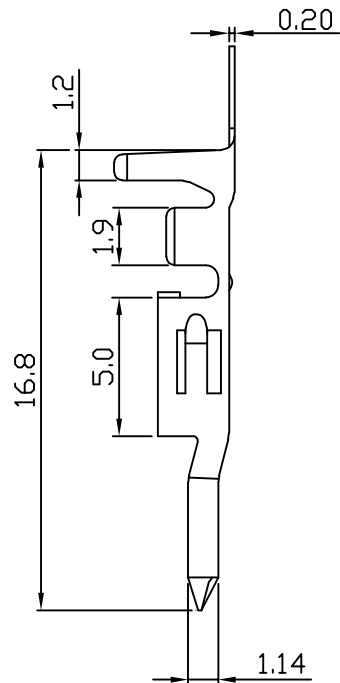
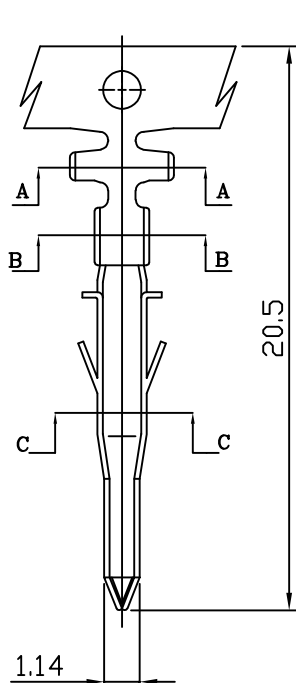


PART NO. 420100TPx51  
 DWG NO. C4201TP



NOTE:

1. Terminal Material: Brass bronze or Phosphor bronze
2. Plated: Tin pre-plated 50u"min.
3. Current rating: 5A AC/DC
4. Voltage rating: 600V AC/DC
5. Withstand voltage: 1500V AC/minute
6. Insulation resistance: 1000MΩ min
7. Insulation O.D.: 0.9~1.8mm
8. Q'ty / reel: 7,000pcs

Dimensional & Ordering Information:

No.	Part No.	Wire Range	Material	Finishing
1	420100TP051	AWG#22~#28	Brass	Tin pre-plated
2	420100TP351	AWG#22~#28	Phosphor	Tin pre-plated

B	變更	christy	3/15 2016	UNLESS OTHERWISE SPECIFIED TOLERANCES 3 PLACE ±0.5 ±0.10 2 PLACE ±1.5 ±0.25 1 PLACE ±2.0 ±0.50 ANGLE DIM	<b>EXCON</b> EXCON TECHNOLOGY COMPANY
A	DWG RELEASE	christy	12/24 2015		
REV.	REVISION		DIS	DATE	
SCALE	REV.	PAGE:	UNIT mm		DWG NO:
4/1	B	1/1	THIRD ANGLE PROJECTION		C4201TP
					PART.NO
					420100TPx51