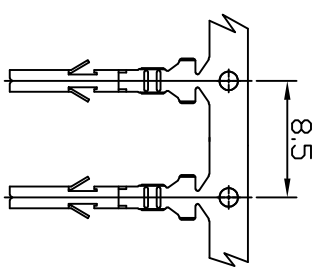
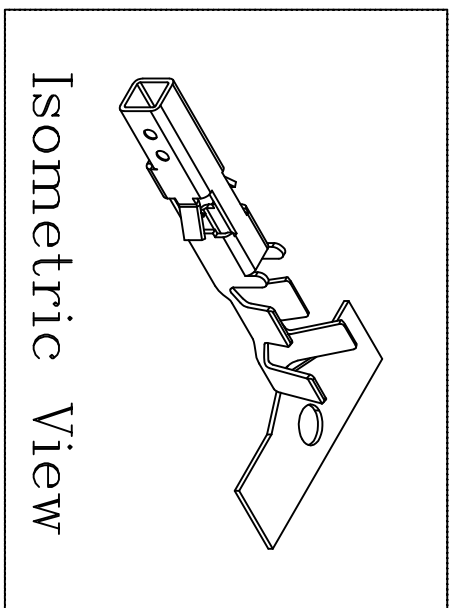
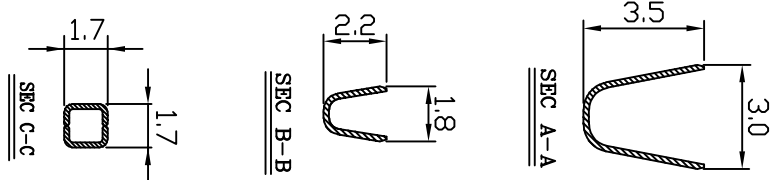
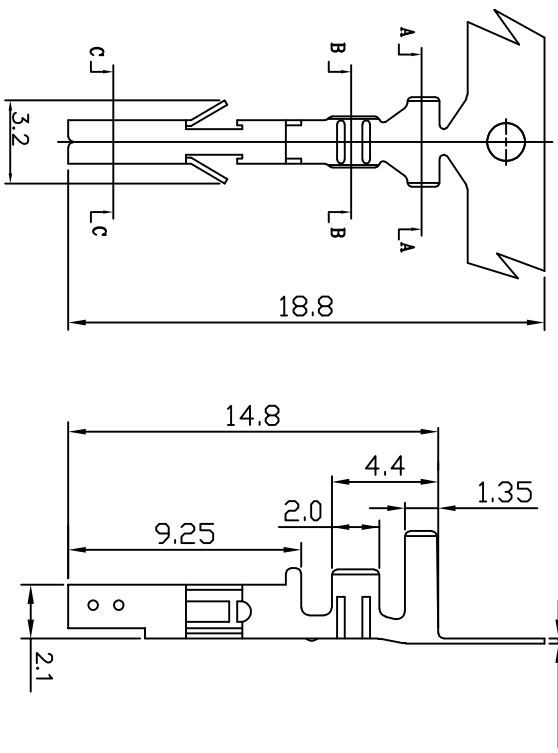


PART NO. 420100TMx51  
 DWG NO. C4201TM



Dimensional & Ordering Information:

No.	Part No.	Wire Range	Material	Finishing
1	420100TM051	AWG#22~#28	Brass	Tin pre-plated
2	420100TM351	AWG#22~#28	Phosphor	Tin pre-plated

- NOTE:
1. Terminal Material: Brass bronze or Phosphor bronze
  2. Plated: Tin pre-plated 50u"min.
  3. Current rating: 5A AC/DC
  4. Voltage rating: 600V AC/DC
  5. Withstand voltage: 1500V AC/minute
  6. Insulation resistance: 1000MΩ min
  7. Insulation O.D.: 0.9~1.8mm
  8. Q'ty / reel: 7,000pcs

REV.	DESCRIPTION	DATE	UNIT	PROJECTION	DWG NO:	PART NO
B	變更	9/18	mm	THIRD ANGLE	C4201TM	420100TMx51
A	DWG RELEASE	12/24				
SCALE	REVISION	DATE				
4/1	B	1/1	THIRD ANGLE	PROJECTION	C4201TM	420100TMx51

