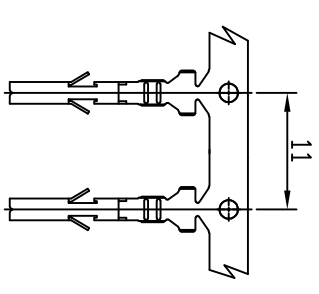
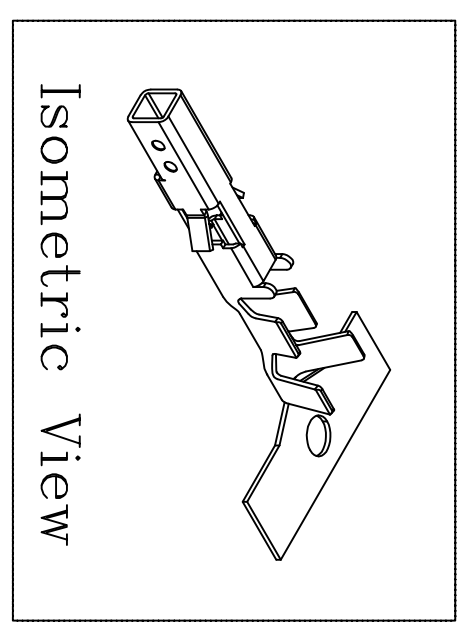
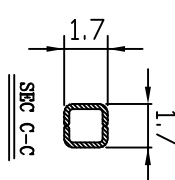
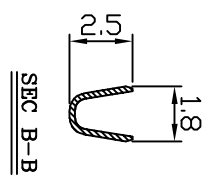
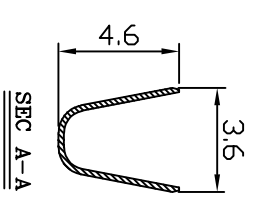
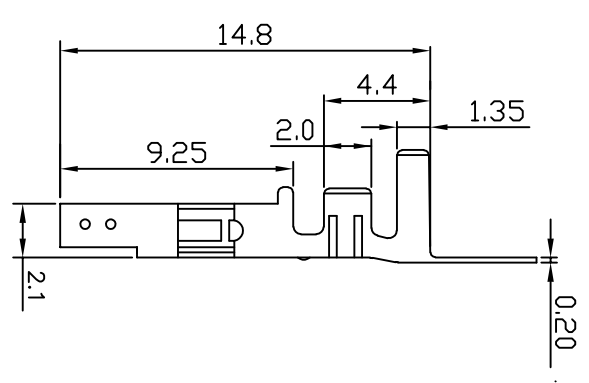
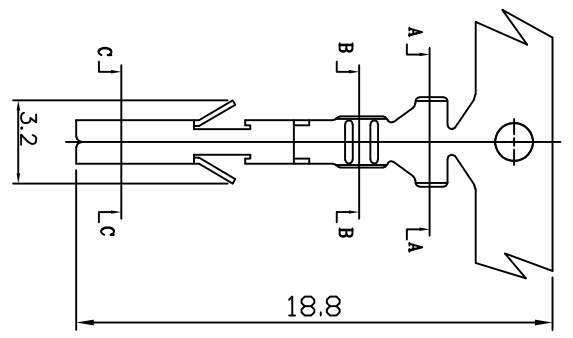


PART NO. 420100TBx51
 DWG NO. C4201TB



Dimensional & Ordering Information:

No.	Part No.	Wire Range	Material	Finishing
1	420100TB051	AWG#24~#18	Brass	Tin pre-plated
2	420100TB351	AWG#24~#18	Phosphor	Tin pre-plated

REV.	REVISION	DATE	UNLESS OTHERWISE SPECIFIED TOLERANCES
D	DWG RELEASE	12/24	3 PLACE ±0.5 ±0.10
C	NOTE: 修改 第2项 Tin-Plated -- Tin-Pre-Plated 新增 第3, 4, 5, 6项及数值T0.2	5/26 2015	2 PLACE ±1.5 ±0.25
			1 PLACE ±2.0 ±0.50

- NOTE:
- Terminal Material: Brass bronze or Phosphor bronze
 - Plated: Tin pre-plated 50u"min.
 - Current rating: 5A AC/DC
 - Voltage rating: 600V AC/DC
 - Withstand voltage: 1500V AC/minute
 - Insulation resistance: 1000MΩ min
 - Insulation O.D.: 1.1~2.1mm
 - Qty / reel: 4,000pcs

SCALE	REV.	PAGE:	UNIT	THIRD ANGLE PROJECTION	DWG NO:	PART NO
4/1	D	1/1	mm		C4201TB	420100TBx51

10 9 8 7 6 5 4 3 2 1