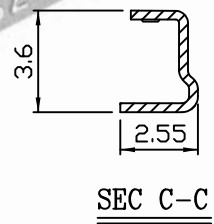
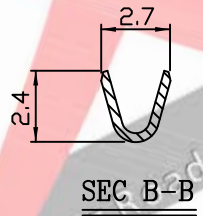
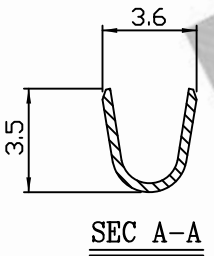
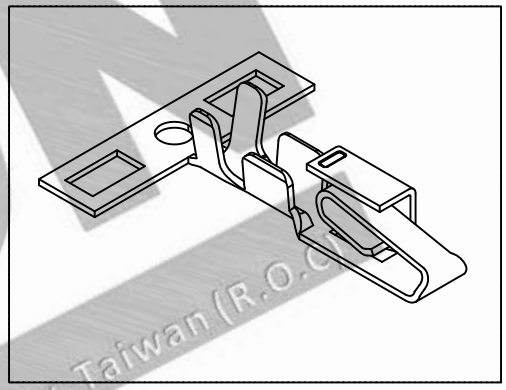
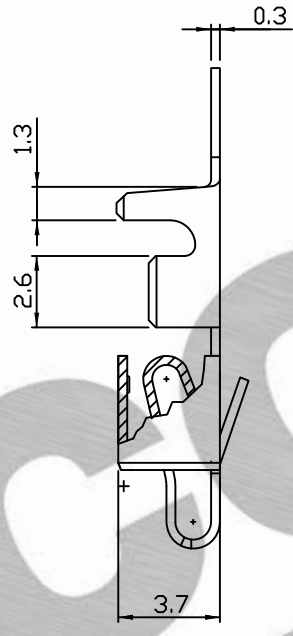
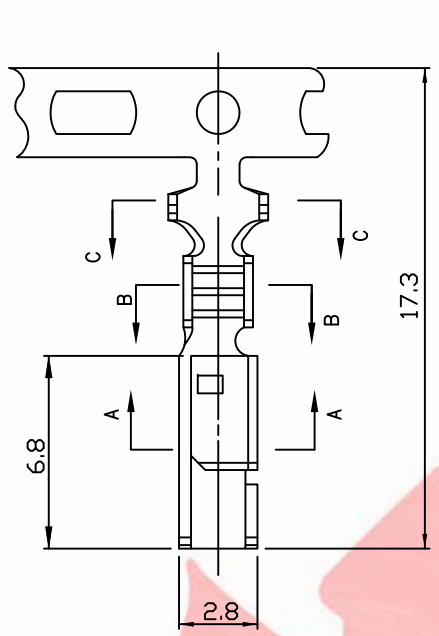


PART NO. 396800TC301
 DWG NO. C3968TC



NOTE:

1. Terminal Material: Brass ,Phosphor
2. Plated: Tin-plated 50u"min.
3. Applicable wires: AWG#26-#18
4. Insulation O.D.: 1.3-2.8mm
5. Q'ty / reel: 6,000 pcs

Part No.	Material	Finishing
396800TC051	Brass	Tin pre-plated
396800TC301	Phosphor	Tin plated
396800TC351	Phosphor	Tin pre-plated

UNLESS OTHERWISE SPECIFIED TOLERANCES
 3 PLACE ±0.5 ±0.10
 2 PLACE ±1.5 ±0.35
 1 PLACE ±2.0 ±0.50
 ANGLE DIM



REV.	REVISION	DIS	DATE
5/1	A	1	

SCALE	REV.	PAGE:	UNIT	mm	DWG NO:	PART.NO
5/1	A	1	THIRD ANGLE PROJECTION		C3968TC	396800TC301