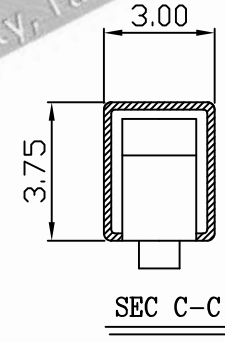
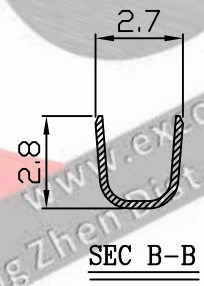
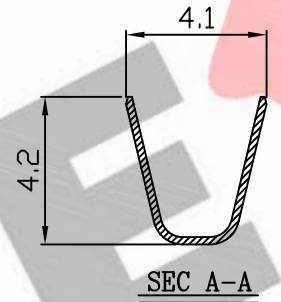
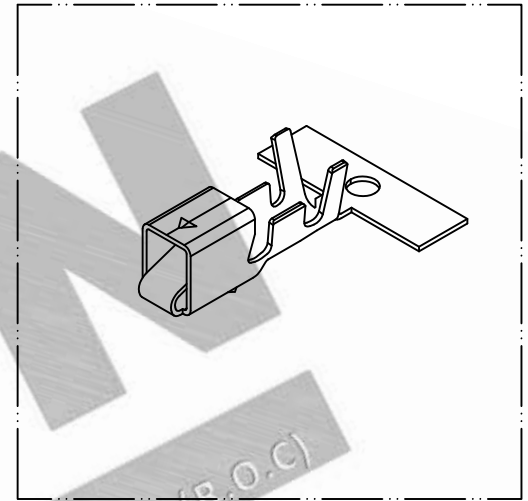
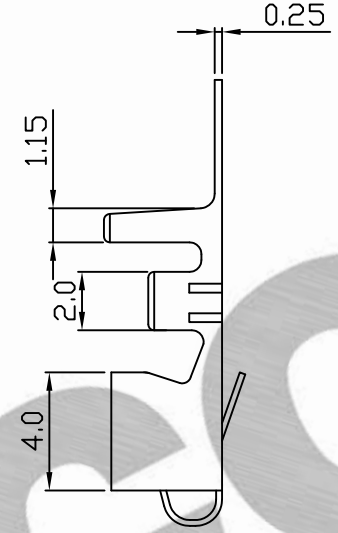
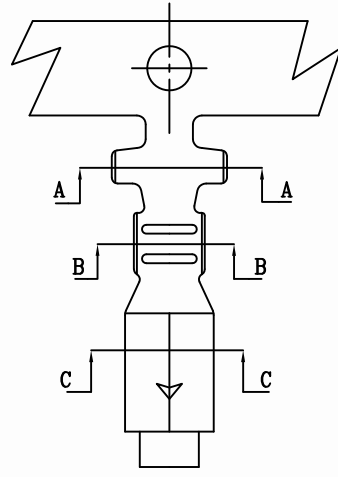


PART NO. 396200TYxxx  
 DWG NO. C3962TY



- NOTE:
1. Terminal Material: Brass
  2. Plated: Tin-plated 50u"min.
  3. Applicable wires: AWG#18-#22
  4. Insulation O.D.: 1.7-3.0mm
  5. Q'ty / reel:4,000 pcs

Part No.	Wire Range	Insulation O.D.	Material	Finish	Q'ty/reel
396200TY351	AWG#16~#20	3.0-1.7mm	Phosphor	Tin pre-plated	4,000pcs
396200TY051	AWG#16~#20	3.0-1.7mm	Brass	Tin pre-plated	4,000pcs

UNLESS OTHERWISE SPECIFIED TOLERANCES  
 3 PLACE ±0.5 ±0.10  
 2 PLACE ±1.5 ±0.25  
 1 PLACE ±2.0 ±0.50  
 ANGLE DIM



REV.	REVISIONI	DIS	DATE	SCALE	REV.	PAGE:	UNIT	mm	DWG NO:	PART.NO
5/1	A	1					THIRD ANGLE PROJECTION		C3962TY	396200TYxxx