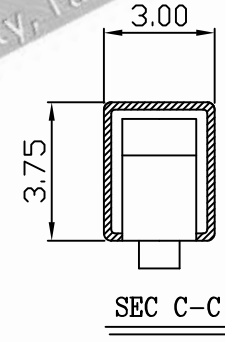
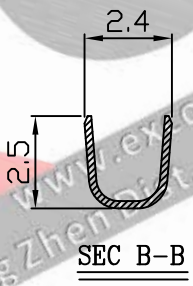
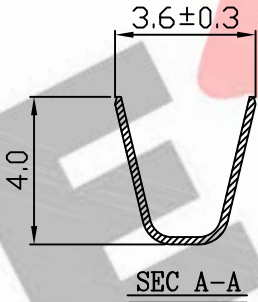
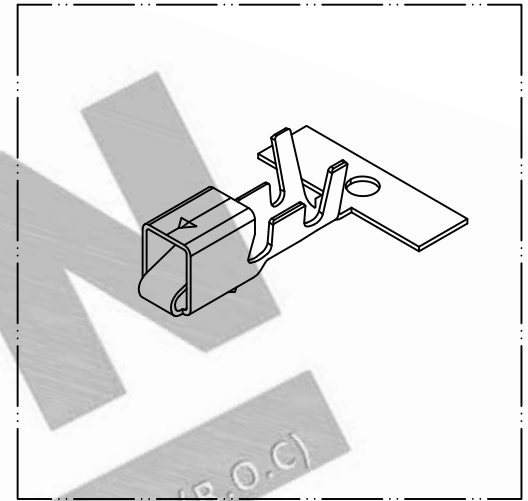
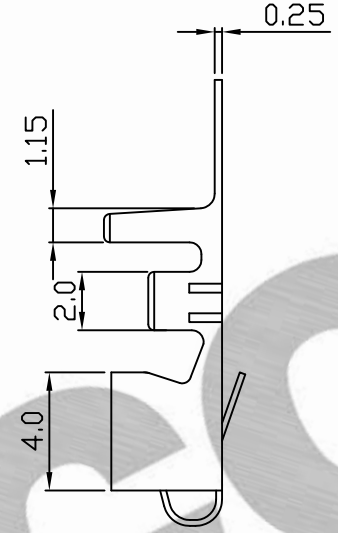
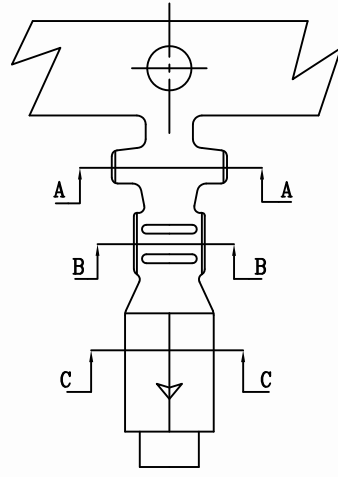


10 9 8 7 6 5 4 3 2 1

PART NO. 396200TCxxx
 DWG NO. C3962TC



- NOTE:
1. Terminal Material: Brass
 2. Plated: Tin-plated 50u"min.
 3. Applicable wires: AWG#18-#22
 4. Insulation O.D.: 1.7-3.0mm
 5. Q'ty / reel:4,000 pcs

Part No.	Wire Range	Insulation O.D.	Material	Finish	Q'ty/reel
396200TC351	AWG#18~#22	3.0-1.7mm	Phosphor	Tin pre-plated	4,000pcs
396200TC051	AWG#18~#22	3.0-1.7mm	Brass	Tin pre-plated	4,000pcs

UNLESS OTHERWISE SPECIFIED TOLERANCES
 3 PLACE ±0.5 ±0.10
 2 PLACE ±1.5 ±0.25
 1 PLACE ±2.0 ±0.50
 ANGLE DIM



REV.	REVISION	DIS	DATE	SCALE	REV.	PAGE:	UNIT	mm	DWG NO:	PART.NO
5/1	A	1					THIRD ANGLE PROJECTION		C3962TC	396200TCxxx

10 9 8 7 6 5 4 3 2 1