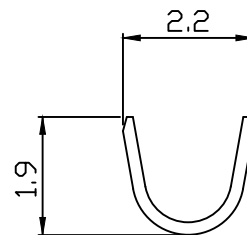
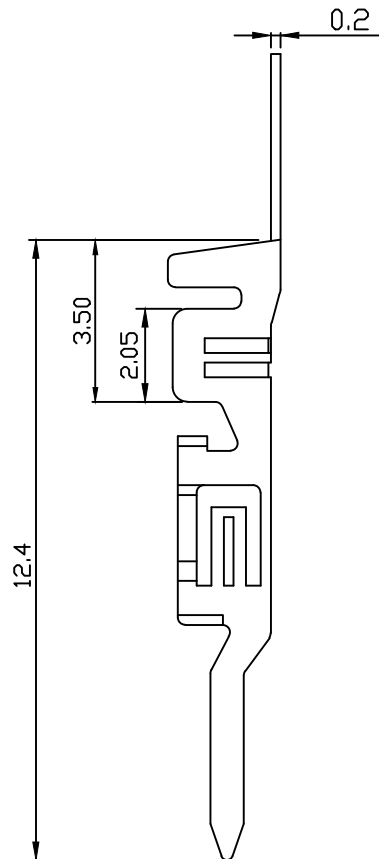
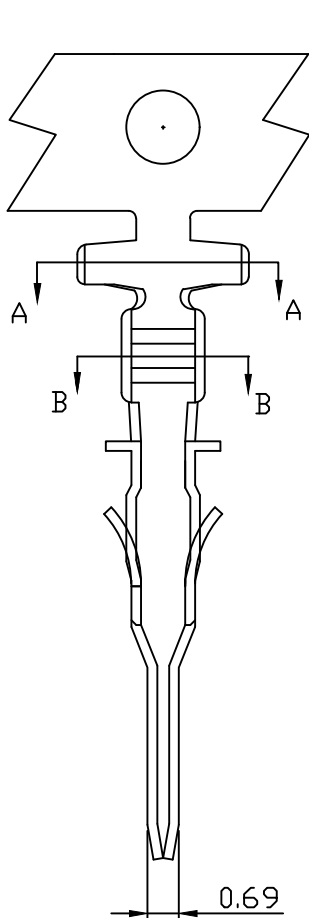
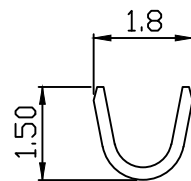


10 9 8 7 6 5 4 3 2 1

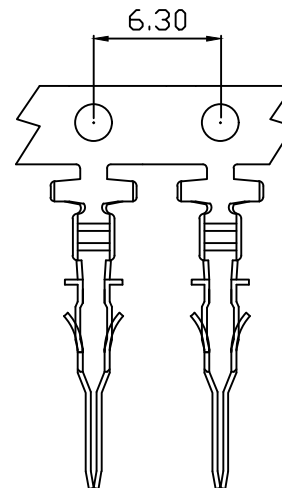
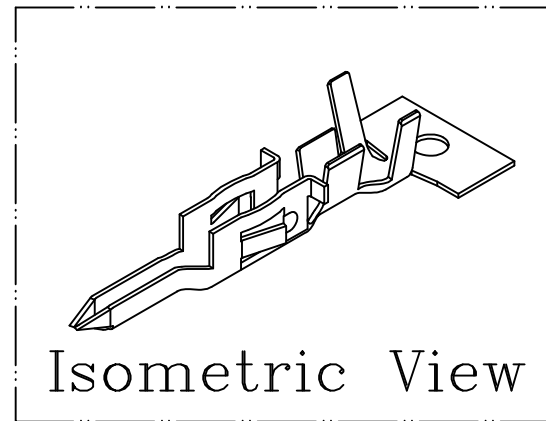
PART NO. 300200TP351  
 DWG NO. C3002TP



SEC A-A



SEC B-B



NOTE:

1. Terminal Material: phosphor
2. Plated: Tin pre-plated 50u"min.
3. Current rating: 5A AC/DC
4. Voltage rating: 250V AC/DC
5. Withstand voltage: 1500V AC/minute
6. Insulation resistance: 1000MΩ min
7. Applicable wires: AWG#26-#30
8. Insulation O.D.: 0.8~1.3mm
9. Q'ty / reel: 15,000pcs

REV.	REVISIONI			DIS	DATE
B	DWG RELEASE			Christy	1/11 2016
SCALE	REV.	PAGE:	UNIT	mm	
4/1	B	1/1	THIRD ANGLE	PROJECTION	

UNLESS OTHERWISE SPECIFIED TOLERANCES  
 3 PLACE ±0.5 ±0.10  
 2 PLACE ±1.5 ±0.25  
 1 PLACE ±2.0 ±0.50  
 ANGLE DIM

**EXCON**  
 EXCON TECHNOLOGY COMPANY

SCALE	REV.	PAGE:	UNIT	mm	DWG NO:	PART.NO
4/1	B	1/1	THIRD ANGLE	PROJECTION	C3002TP	300200TP351

10 9 8 7 6 5 4 3 2 1