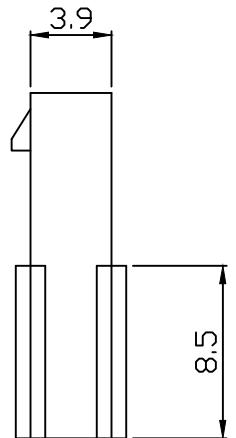
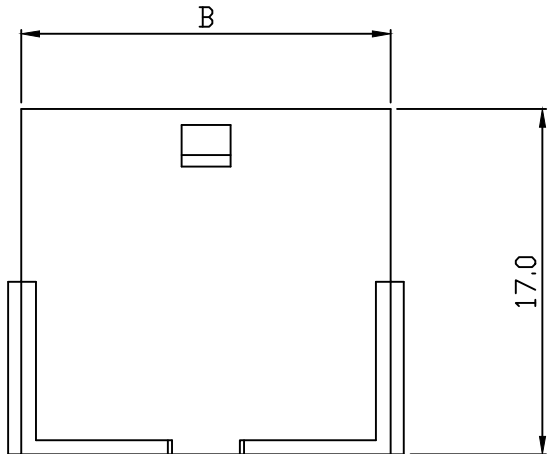
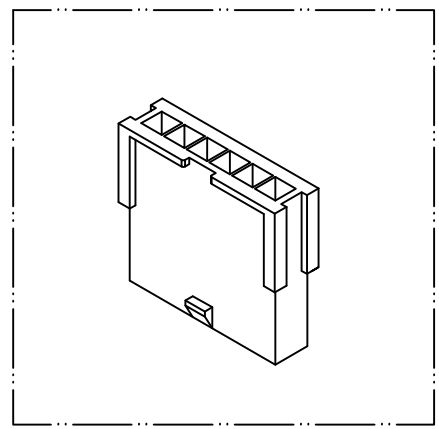
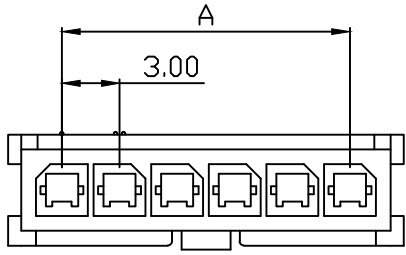


PART NO. 3002xxHF003  
 DWG NO. C3002HF



Dimensional & Ordering Information:

Part No.	Circuits	Dim A	Dim B
300202HF003	2	3.00	7.00
300203HF003	3	6.00	10.00
300204HF003	4	9.00	13.00
300205HF003	5	12.00	16.00
300206HF003	6	15.00	19.00
300207HF003	7	18.00	22.00
300208HF003	8	21.00	25.00
300209HF003	9	24.00	28.00
300210HF003	10	27.00	31.00
300211HF003	11	30.00	34.00
300212HF003	12	33.00	37.00

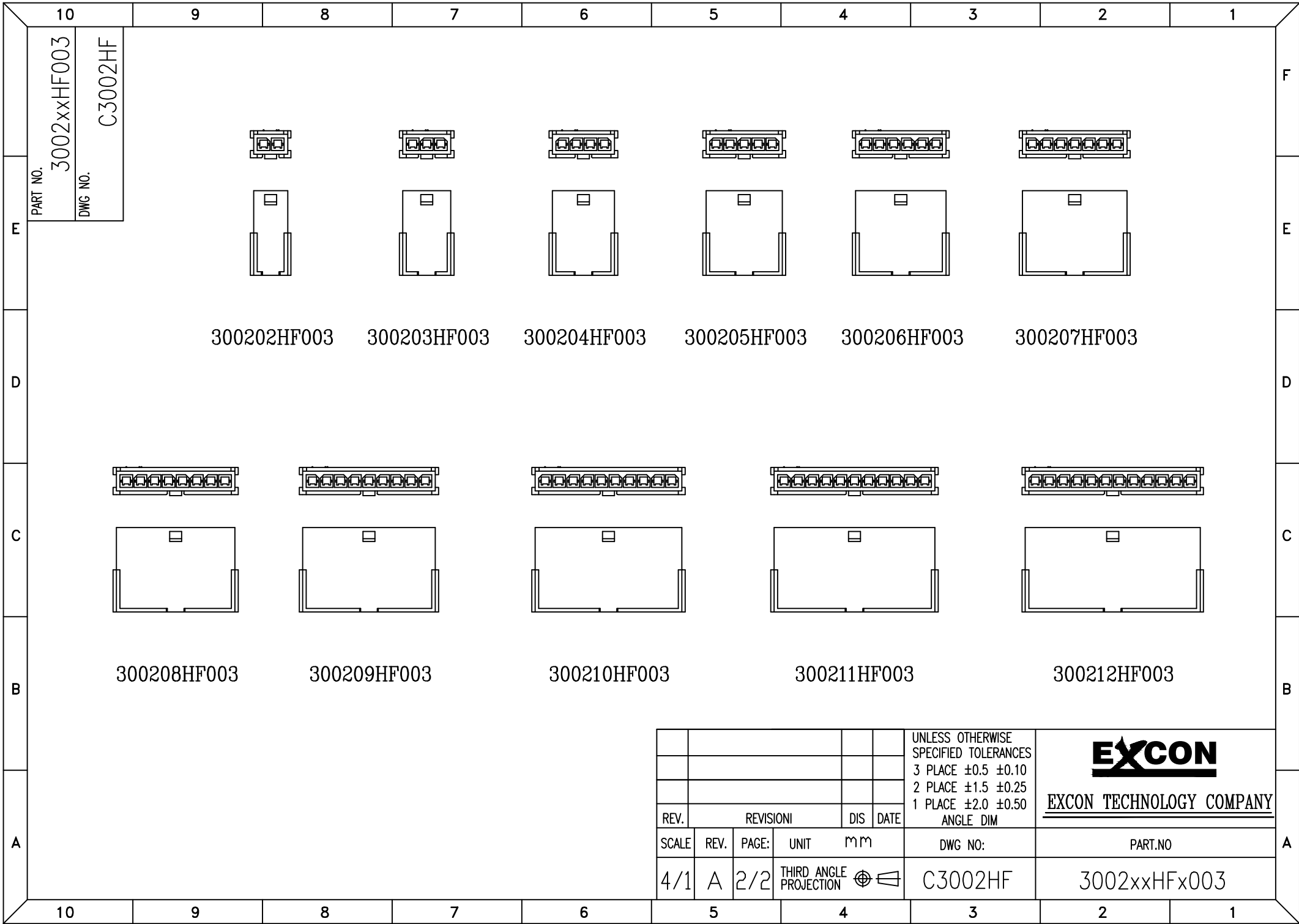
NOTE:

1. Housing Material: Nylon 66 UL94V0
2. Color: Black
3. Withstand voltage: 1500V AC/minute.
4. Current rating: 5A AC/DC.
5. Voltage rating: 250V AC/DC

UNLESS OTHERWISE SPECIFIED TOLERANCES			
3 PLACE ±0.5 ±0.10			
2 PLACE ±1.5 ±0.25			
1 PLACE ±2.0 ±0.50			
ANGLE DIM			
REV.	REVISION	DIS	DATE
SCALE	REV.	PAGE:	UNIT
4/1	A	1/2	mm
THIRD ANGLE PROJECTION			
DWG NO:			C3002HF

**EXCON**  
 EXCON TECHNOLOGY COMPANY


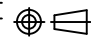
PART.NO  
 3002xxHF003



PART NO. 3002xxHF003  
 DWG NO. C3002HF

300202HF003 300203HF003 300204HF003 300205HF003 300206HF003 300207HF003

300208HF003 300209HF003 300210HF003 300211HF003 300212HF003

				UNLESS OTHERWISE SPECIFIED TOLERANCES		 <b>EXCON TECHNOLOGY COMPANY</b>
				3 PLACE ±0.5 ±0.10		
				2 PLACE ±1.5 ±0.25		
				1 PLACE ±2.0 ±0.50		PART.NO
				ANGLE DIM		
REV.	REVISIONI			DIS	DATE	DWG NO:
SCALE	REV.	PAGE:	UNIT	m m		
4/1	A	2/2	THIRD ANGLE PROJECTION			C3002HF
						3002xxHFx003