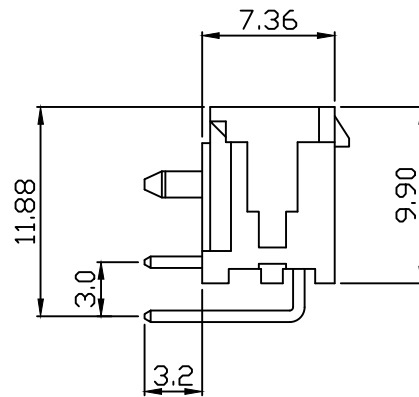
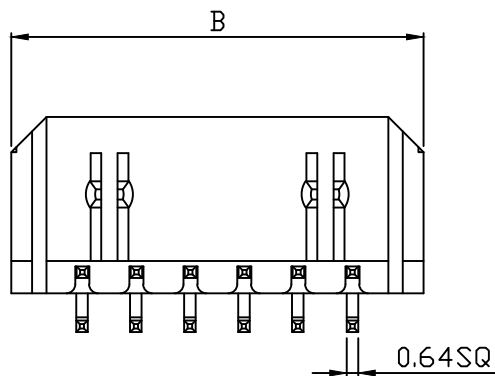
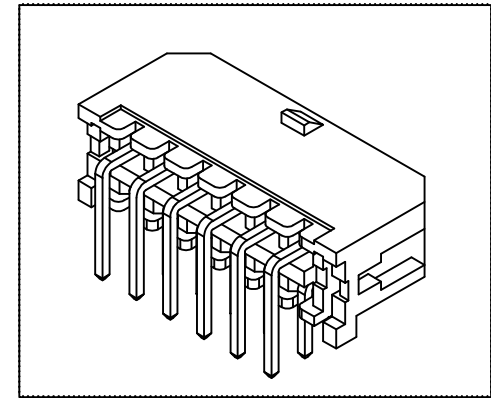
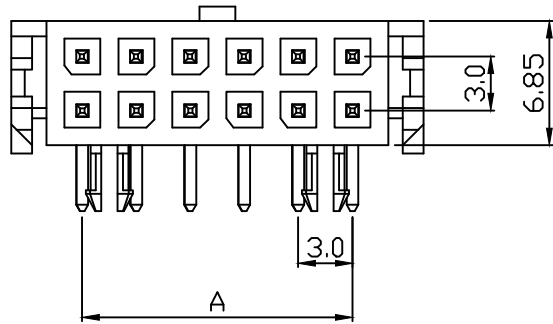


PART NO. 3001xxWR003
 DWG NO. C3001WR



Dimensional & Ordering Information:

Part No.		Circuits	Dim A	Dim B
NY 46	NY 66			
300102WR103	300102WR003	2	--	6.65
300104WR103	300104WR003	4	3.0	9.65
300106WR103	300106WR003	6	6.0	12.65
300108WR103	300108WR003	8	9.0	15.65
300110WR103	300110WR003	10	12.0	18.65
300112WR103	300112WR003	12	15.0	21.65
300114WR103	300114WR003	14	18.0	24.65
300116WR103	300116WR003	16	21.0	27.65
300118WR103	300118WR003	18	24.0	30.65
300120WR103	300120WR003	20	27.0	33.65
300122WR103	300122WR003	22	30.0	36.65
300124WR103	300124WR003	24	33.0	39.65

NOTE:

1. Wafer Material: NY66 UL 94V0
Pin/Pos Material: brass bronze.
2. Plated: Tin-plated 50u"min.
3. Insulation resistance: 1000MΩ min.
4. Withstand voltage: 1500V AC/minute.
5. Current rating: 5A AC/DC.
6. Voltage rating: 250V AC/DC

REV.	REVISION	DIS	DATE

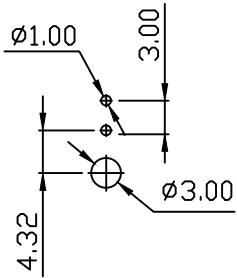
UNLESS OTHERWISE SPECIFIED TOLERANCES
 3 PLACE ±0.5 ±0.10
 2 PLACE ±1.5 ±0.25
 1 PLACE ±2.0 ±0.50
 ANGLE DIM



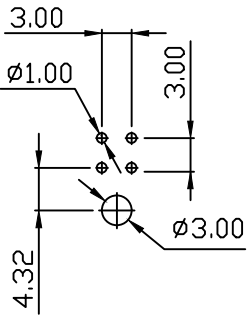
SCALE	REV.	PAGE	UNIT	mm	DWG NO:	PART.NO
4/1	A	1/2	THIRD ANGLE PROJECTION		C3001WR	3001xxWR003

10 9 8 7 6 5 4 3 2 1

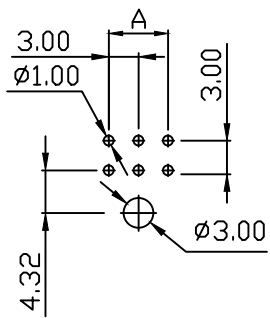
PART NO. 3001xxWR003
 DWG NO. C3001WR



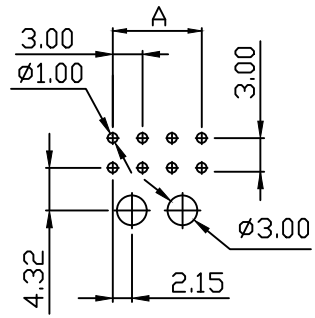
RECOMMENDED PCB LAYOUT
 (PCB THK=1.0~1.6)
 2P ONLY




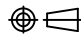
RECOMMENDED PCB LAYOUT
 (PCB THK=1.0~1.6)
 4P ONLY



RECOMMENDED PCB LAYOUT
 (PCB THK=1.0~1.6)
 6P ONLY



RECOMMENDED PCB LAYOUT
 (PCB THK=1.0~1.6)
 8~24P ONLY

				UNLESS OTHERWISE SPECIFIED TOLERANCES		 EXCON TECHNOLOGY COMPANY
				3 PLACE ±0.5 ±0.10		
				2 PLACE ±1.5 ±0.25		
				1 PLACE ±2.0 ±0.50		
				ANGLE DIM		
REV.	REVISION			DIS	DATE	
SCALE	REV.	PAGE:	UNIT	mm		DWG NO:
4/1	A	2/2	THIRD ANGLE PROJECTION			C3001WR
					PART.NO	
					3001xxWR003	

10 9 8 7 6 5 4 3 2 1