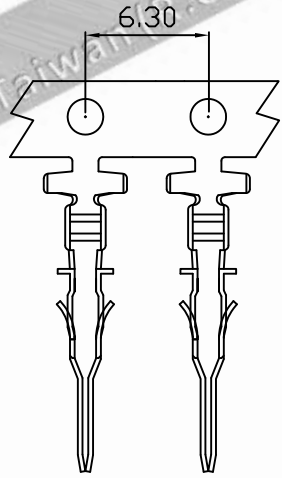
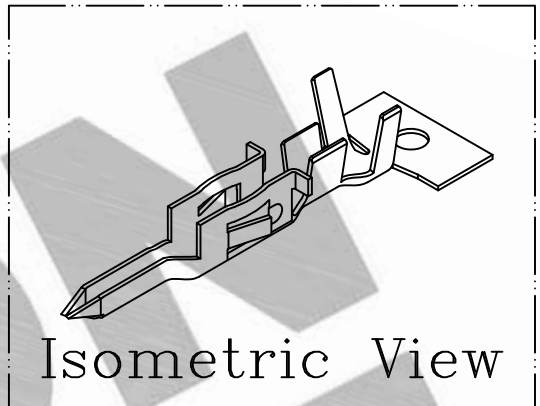
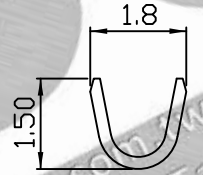
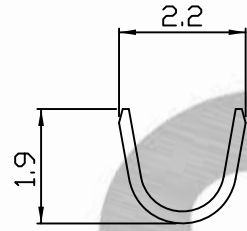
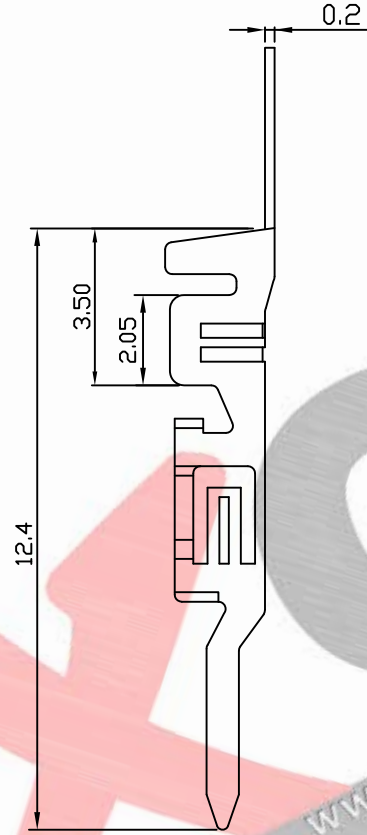
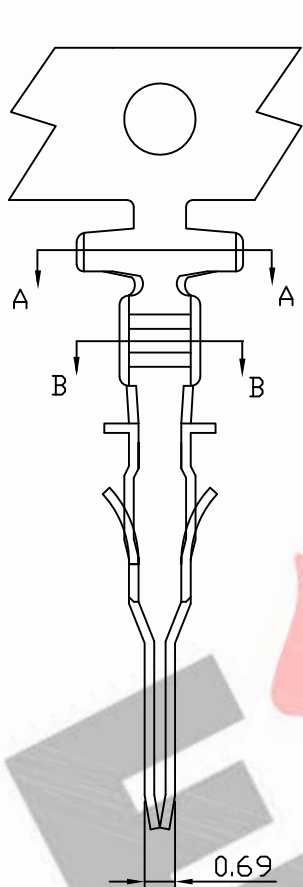
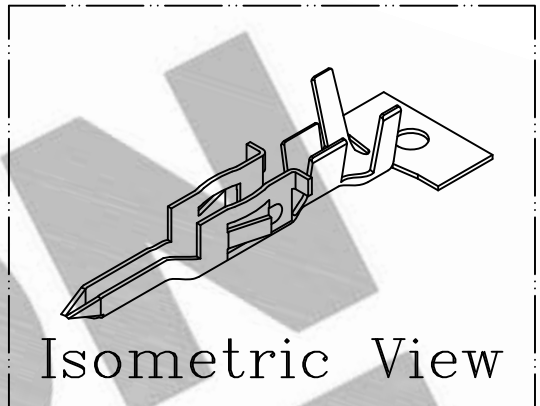
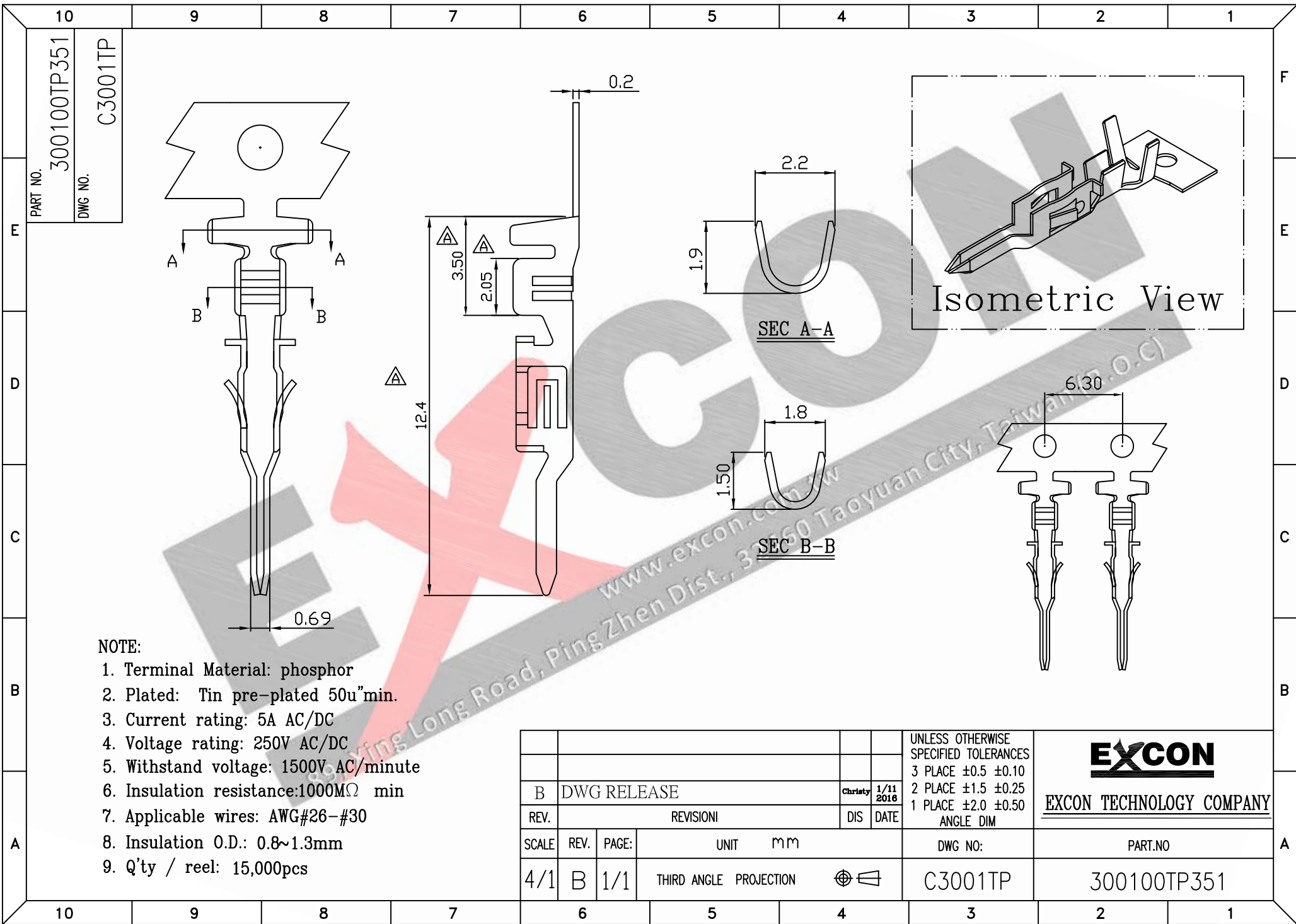


PART NO. 300100TP051
 DWG NO. C3001TP



- NOTE:
1. Terminal Material: Brass
 2. Plated: Tin pre-plated 50u"min.
 3. Current rating: 5A AC/DC
 4. Voltage rating: 250V AC/DC
 5. Withstand voltage: 1500V AC/minute
 6. Insulation resistance: 1000MΩ min
 7. Applicable wires: AWG#26-#30
 8. Insulation O.D.: 0.8~1.3mm
 9. Q'ty / reel: 15,000pcs

				UNLESS OTHERWISE SPECIFIED TOLERANCES		 EXCON TECHNOLOGY COMPANY
				3 PLACE ±0.5 ±0.10 2 PLACE ±1.5 ±0.25 1 PLACE ±2.0 ±0.50 ANGLE DIM		
REV.	REVISION			DIS	DATE	
SCALE	REV.	PAGE:	UNIT	mm		DWG NO:
4/1	A	1/1	THIRD ANGLE PROJECTION			C3001TP
					DWG NO:	PART.NO
					C3001TP	300100TP051



NOTE:

1. Terminal Material: phosphor
2. Plated: Tin pre-plated 50u"min.
3. Current rating: 5A AC/DC
4. Voltage rating: 250V AC/DC
5. Withstand voltage: 1500V AC/minute
6. Insulation resistance: 1000MΩ min
7. Applicable wires: AWG#26-#30
8. Insulation O.D.: 0.8~1.3mm
9. Q'ty / reel: 15,000pcs

				UNLESS OTHERWISE SPECIFIED TOLERANCES		EXCON EXCON TECHNOLOGY COMPANY
				3 PLACE ±0.5 ±0.10 2 PLACE ±1.5 ±0.25 1 PLACE ±2.0 ±0.50 ANGLE DIM		
REV.	REVISION			DIS	DATE	
B	DWG RELEASE			Christy	1/11 2016	
SCALE	REV.	PAGE:	UNIT	mm		DWG NO:
4/1	B	1/1	THIRD ANGLE PROJECTION			C3001TP
					PART.NO	
					300100TP351	

PART NO. 300100TP351
DWG NO. C3001TP