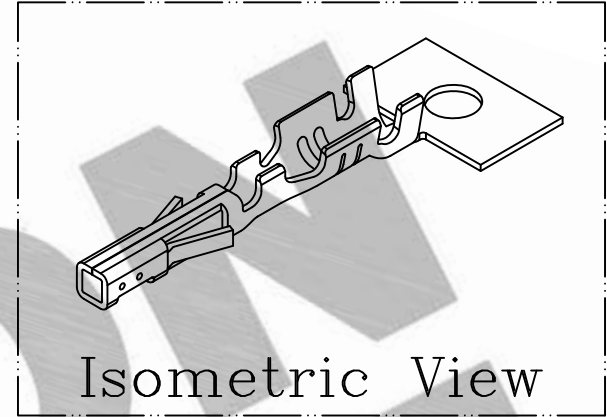
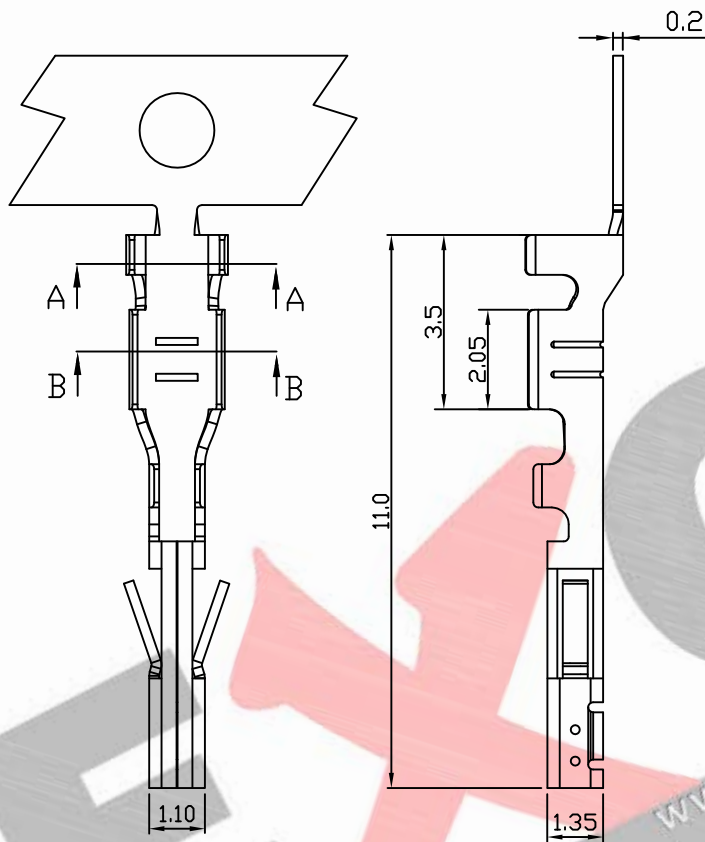


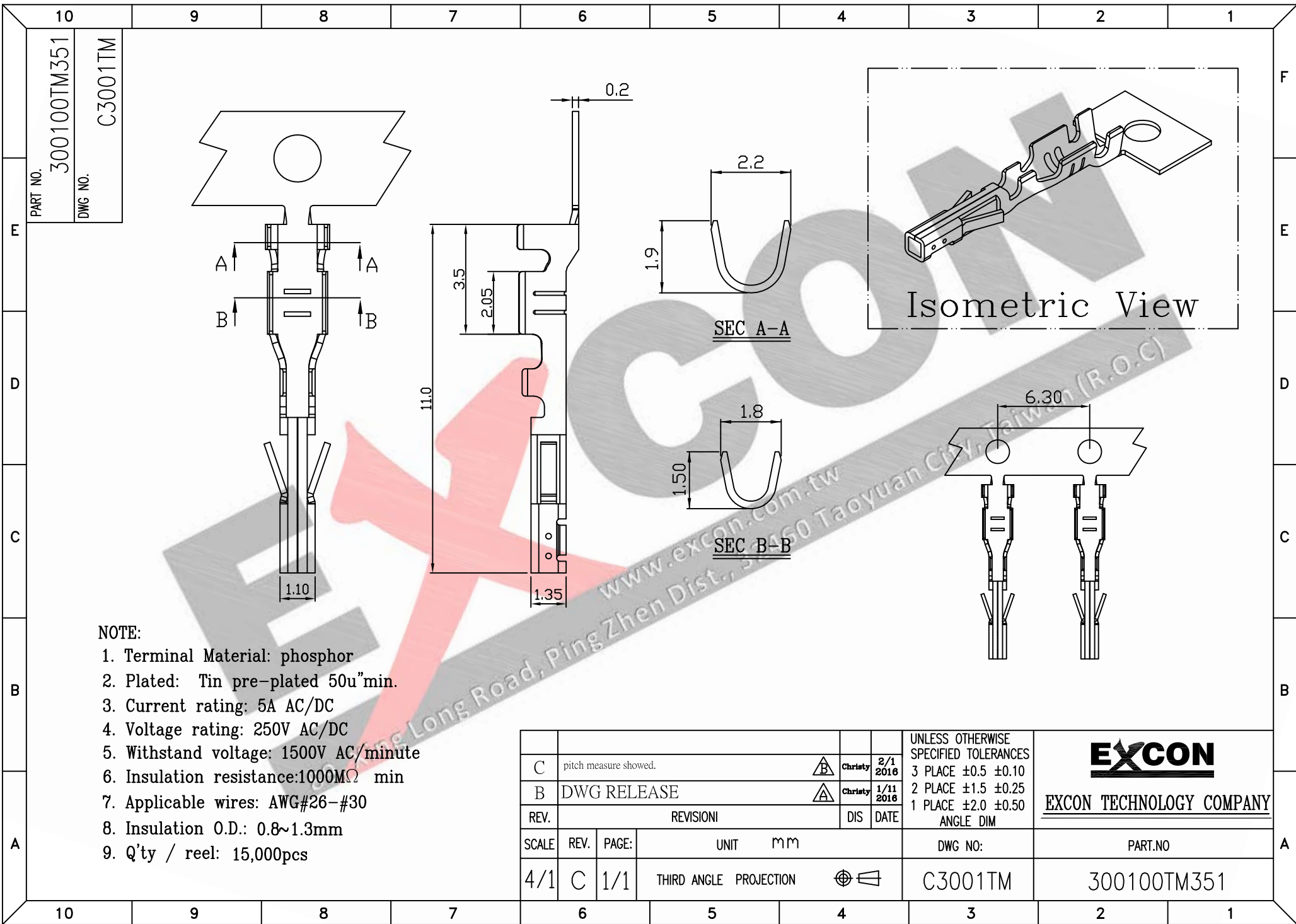
PART NO. 300100TM051
 DWG NO. C3001TM



NOTE:

1. Terminal Material: Brass
2. Plated: Tin pre-plated 50u"min.
3. Current rating: 5A AC/DC
4. Voltage rating: 250V AC/DC
5. Withstand voltage: 1500V AC/minute
6. Insulation resistance: 1000MΩ min
7. Applicable wires: AWG#26-#30
8. Insulation O.D.: 0.8~1.3mm
9. Q'ty / reel: 15,000pcs

				UNLESS OTHERWISE SPECIFIED TOLERANCES		EXCON EXCON TECHNOLOGY COMPANY
				3 PLACE ±0.5 ±0.10 2 PLACE ±1.5 ±0.25 1 PLACE ±2.0 ±0.50 ANGLE DIM		
A	DWG RELEASE			△	Christy 2/1 2016	
REV.	REVISION			DIS	DATE	
SCALE	REV.	PAGE:	UNIT	mm		DWG NO:
4/1	A	1/1	THIRD ANGLE PROJECTION			C3001TM
					DWG NO:	PART.NO
					C3001TM	300100TM051



PART NO. 300100TM351
 DWG NO. C3001TM

NOTE:

1. Terminal Material: phosphor
2. Plated: Tin pre-plated 50u"min.
3. Current rating: 5A AC/DC
4. Voltage rating: 250V AC/DC
5. Withstand voltage: 1500V AC/minute
6. Insulation resistance: 1000MΩ min
7. Applicable wires: AWG#26-#30
8. Insulation O.D.: 0.8~1.3mm
9. Q'ty / reel: 15,000pcs

C		pitch measure showed.		△	Christy	2/1 2016	UNLESS OTHERWISE SPECIFIED TOLERANCES 3 PLACE ±0.5 ±0.10 2 PLACE ±1.5 ±0.25 1 PLACE ±2.0 ±0.50 ANGLE DIM	EXCON EXCON TECHNOLOGY COMPANY
B		DWG RELEASE		△	Christy	1/11 2016		
REV.	REVISION				DIS	DATE		
SCALE	REV.	PAGE:	UNIT		mm	DWG NO:		PART.NO
4/1	C	1/1	THIRD ANGLE PROJECTION		⊕	C3001TM	300100TM351	