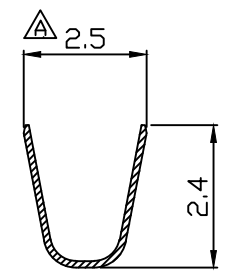
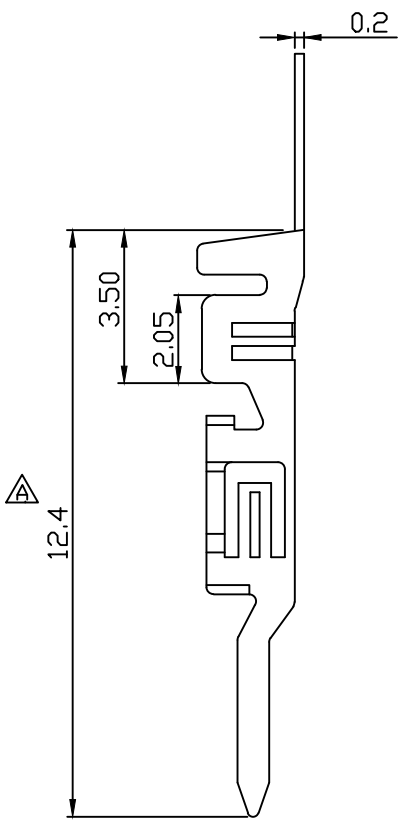
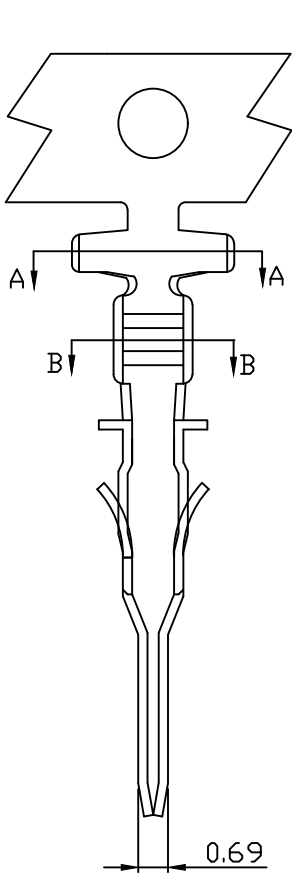
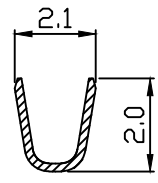


10 9 8 7 6 5 4 3 2 1

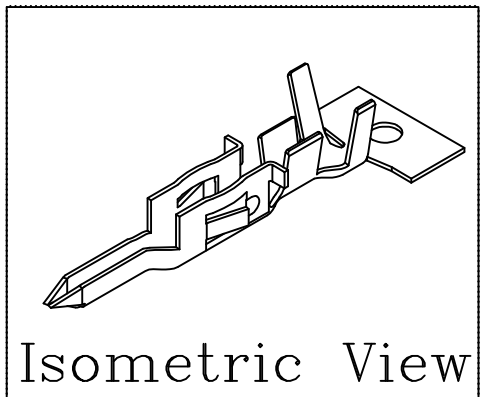
PART NO. 300100TA351
 DWG NO. C3001TA



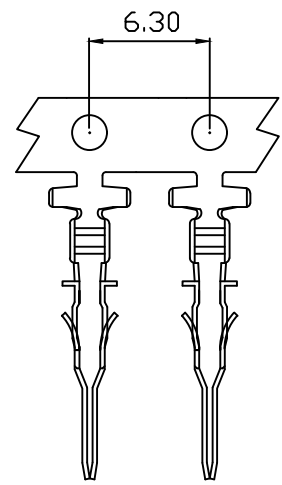
SEC A-A



SEC B-B



Isometric View



NOTE:

1. Terminal Material: phosphor
2. Plated: Tin pre-plated 50u"min.
3. Current rating: 5A AC/DC
4. Voltage rating: 250V AC/DC
5. Withstand voltage: 1500V AC/minute
6. Insulation resistance: 1000MΩ min
7. Applicable wires: AWG#24-#20
8. Insulation O.D.: 1.2~1.7mm
9. Q'ty / reel: 15,000pcs

c		pitch measure showed.		B		Christy 1/30 2018		UNLESS OTHERWISE SPECIFIED TOLERANCES		 EXCON TECHNOLOGY COMPANY	
B		DWG RELEASE		A		Christy 8/12 2015		3 PLACE ±0.5 ±0.10			
REV.		REVISION		DIS		DATE		2 PLACE ±1.5 ±0.25			
SCALE		PAGE:		UNIT		mm		1 PLACE ±2.0 ±0.50		PART.NO	
4/1		C 1/1		THIRD ANGLE PROJECTION				ANGLE DIM		300100TA351	
								DWG NO:		C3001TA	

10 9 8 7 6 5 4 3 2 1