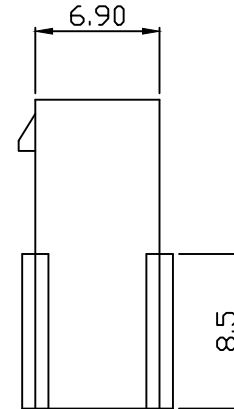
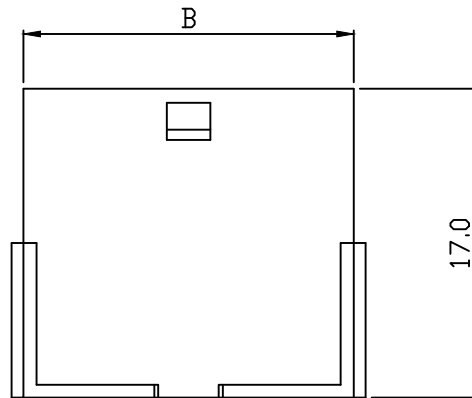
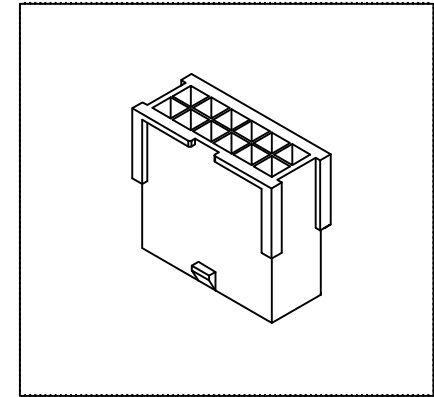
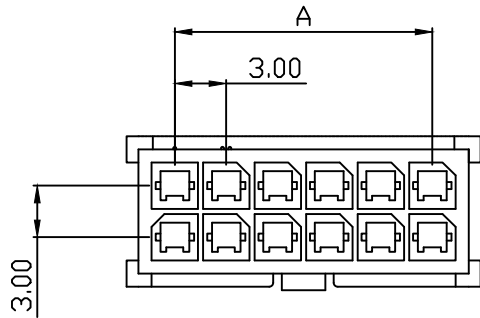


PART NO. 3001xxHF003
 DWG NO. C3001HF



Dimensional & Ordering Information:

Part No.	Circuits	Dim A	Dim B
300102HF003	2	--	4.0
300104HF003	4	3.0	7.0
300106HF003	6	6.0	10.0
300108HF003	8	9.0	13.0
300110HF003	10	12.0	16.0
300112HF003	12	15.0	19.0
300114HF003	14	18.0	22.0
300116HF003	16	21.0	25.0
300118HF003	18	24.0	28.0
300120HF003	20	27.0	31.0
300122HF003	22	30.0	34.0
300124HF003	24	33.0	37.0

NOTE:

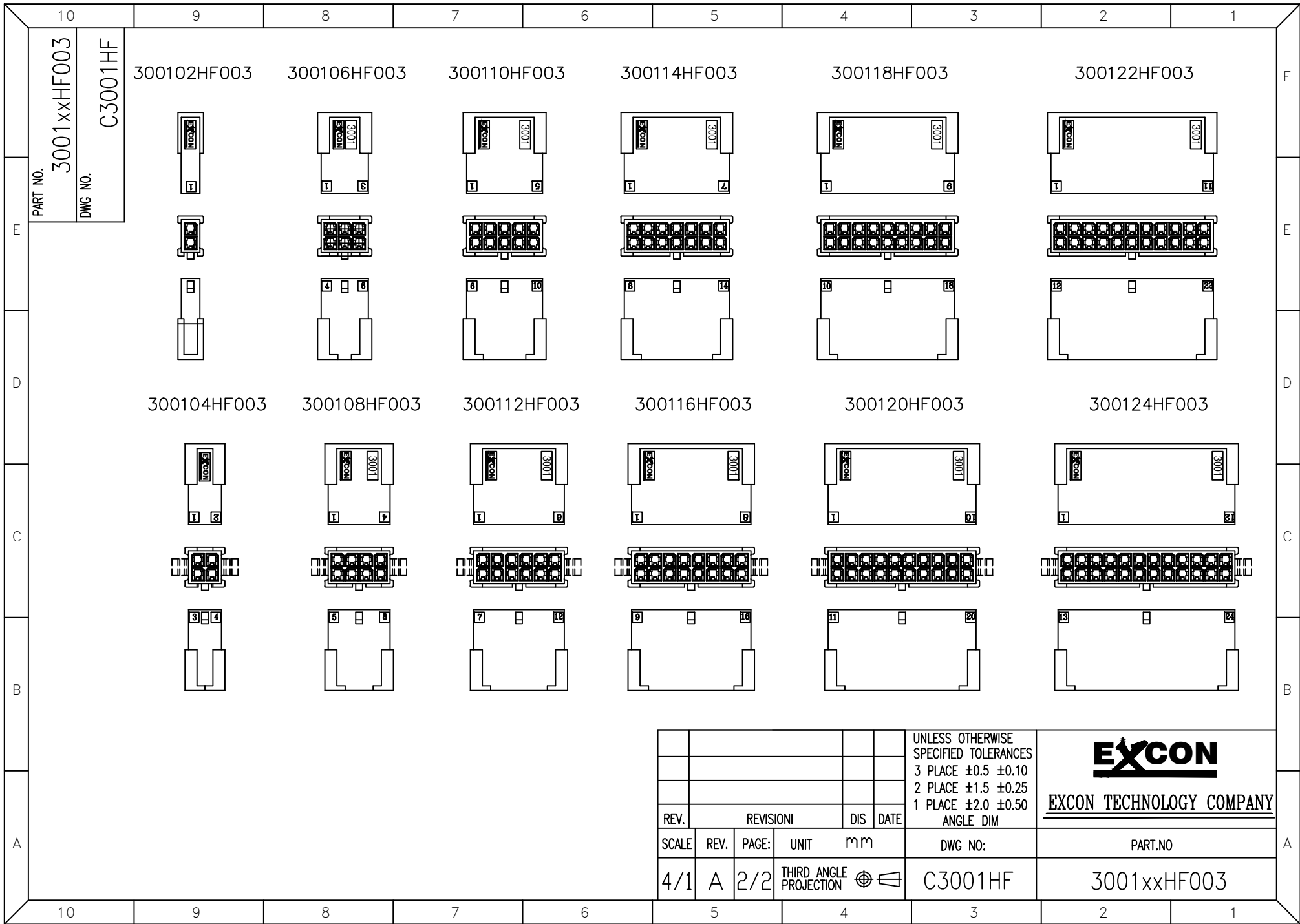
1. Housing Material: Nylon 66 UL94V0
2. Color: Black
3. Withstand voltage: 1500V AC/minute.
4. Current rating: 5A AC/DC.
5. Voltage rating: 250V AC/DC

REV.	REVISION	DIS	DATE

UNLESS OTHERWISE SPECIFIED TOLERANCES
 3 PLACE ±0.5 ±0.10
 2 PLACE ±1.5 ±0.25
 1 PLACE ±2.0 ±0.50
 ANGLE DIM




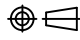
SCALE	REV.	PAGE	UNIT	mm	DWG NO:	PART.NO
4/1	A	1/2	THIRD ANGLE PROJECTION		C3001HF	3001xxHF003



PART NO. 3001xxHF003
 DWG NO. C3001HF

E
D
C
B
A

F
E
D
C
B
A

				UNLESS OTHERWISE SPECIFIED TOLERANCES		 EXCON TECHNOLOGY COMPANY
				3 PLACE ±0.5 ±0.10 2 PLACE ±1.5 ±0.25 1 PLACE ±2.0 ±0.50 ANGLE DIM		
REV.	REVISION		DIS	DATE		PART.NO
SCALE	REV.	PAGE:	UNIT	mm		
4/1	A	2/2	THIRD ANGLE PROJECTION			3001xxHF003
				DWG NO: C3001HF		

10 9 8 7 6 5 4 3 2 1