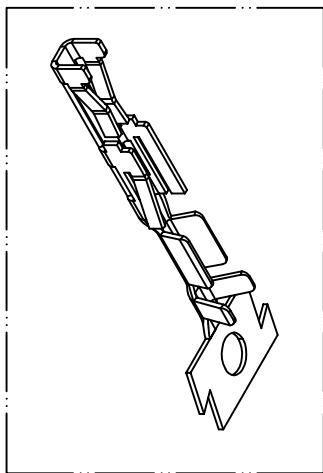
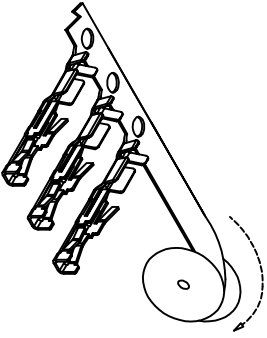
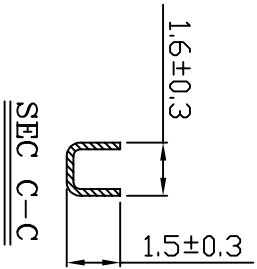
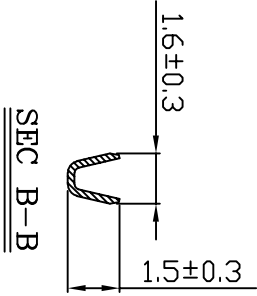
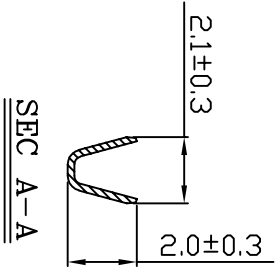
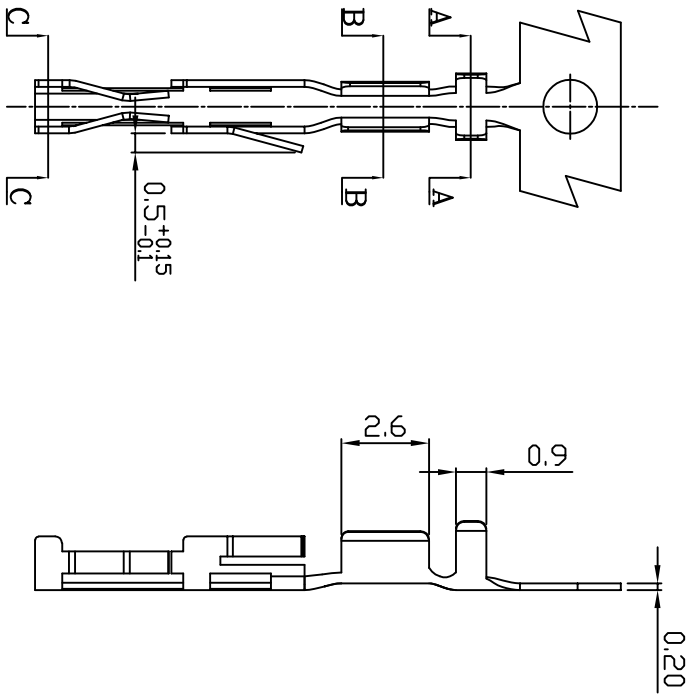


PART NO.
255000TC501
DWG NO.
C2550TC



- NOTE:
1. Terminal Material: phosphor
 2. Plated: Ni 25u"min Tin-plated 50u"min.
 3. Applicable wires: AWG#28-#22
Insulation O.D.: 0.9-1.6mm
 4. Plated: Gold Flash
 5. Qty / reel: 20,000pcs

No.	Part No.	Material	Finish
1	255000TC501	phosphor	Gold flash
2			

UNLESS OTHERWISE SPECIFIED TOLERANCES
3 PLACE ±0.5 ±0.10
2 PLACE ±1.5 ±0.25
1 PLACE ±2.0 ±0.50
ANGLE DIM

EXCON

EXCON TECHNOLOGY COMPANY

PART NO

REV.	REV.	PAGE:	UNIT	DIS	DATE
		1			
SCALE					
NONE	B				

DWG NO: C2550TC

255000TC501

