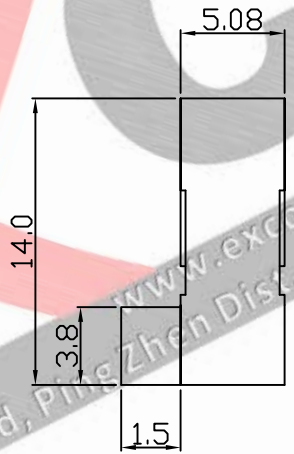
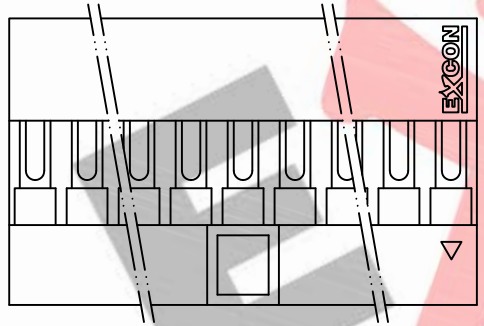
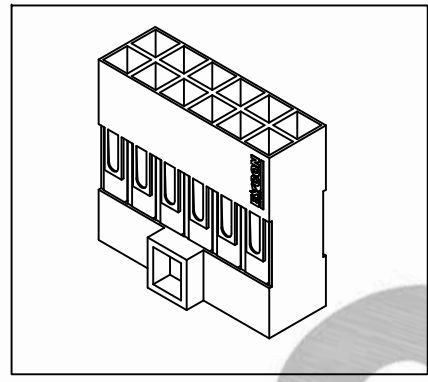
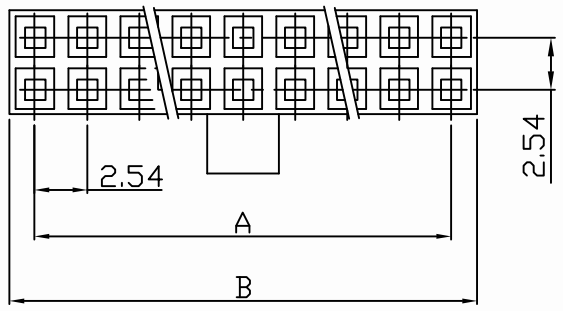


PART NO. 2544xxHA298
 DWG NO. C2544HA



Dimensional & Ordering Information:

Part No.	POS	A	B
254406HA298	6	5.08	7.62
254408HA298	8	7.62	10.16
254410HA298	10	10.16	12.70
254414HA298	14	15.24	17.78
254416HA298	16	17.78	20.32
254420HA298	20	22.86	25.40
254424HA298	24	27.94	32.48
254426HA298	26	30.48	33.02
254430HA298	30	35.56	38.10
254434HA298	34	40.64	43.18
254440HA298	40	48.26	50.80
254444HA298	44	53.34	55.88
254450HA298	50	60.96	63.50
254460HA298	60	73.66	76.20
254464HA298	64	78.24	80.78

- NOTE:
1. Housing Material: PPO
 2. Insulation resistance: 1000MΩ min.
 3. Withstand voltage: 1000V AC/minute.
 4. Current rating: 3A AC/DC.
 5. Voltage rating: 250V AC/DC

				UNLESS OTHERWISE SPECIFIED TOLERANCES		 EXCON TECHNOLOGY COMPANY
				3 PLACE ±0.5 ±0.10		
				2 PLACE ±1.5 ±0.25		
				1 PLACE ±2.0 ±0.50		
				ANGLE DIM		
REV.	REVISION			DIS	DATE	
SCALE	REV.	PAGE:	UNIT	mm		DWG NO:
2/1	A	1	THIRD ANGLE PROJECTION			C2544HA
					PART.NO	
					2544xxHA298	