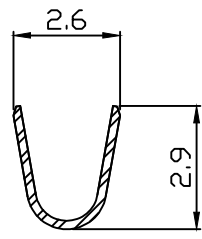
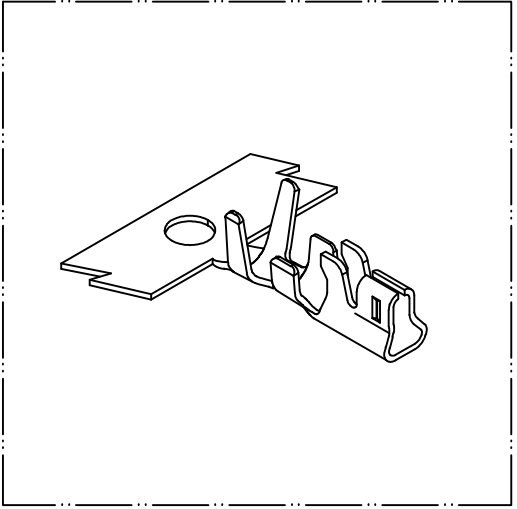
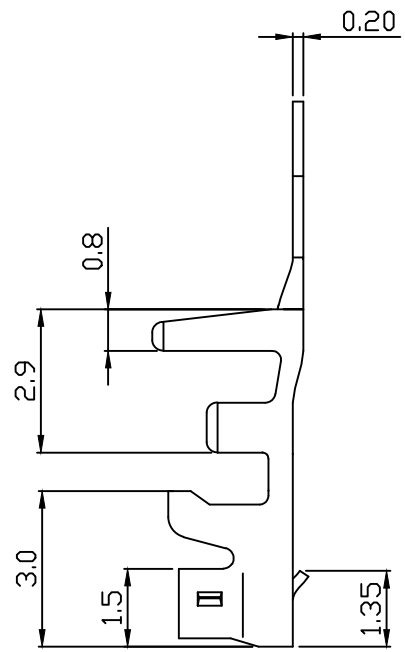
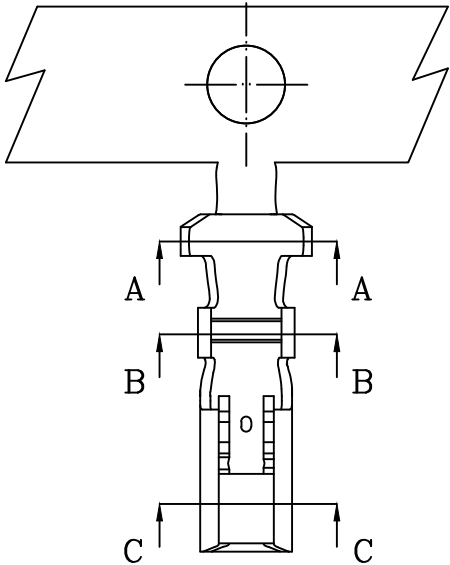
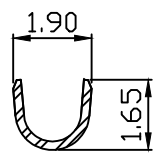


10 9 8 7 6 5 4 3 2 1

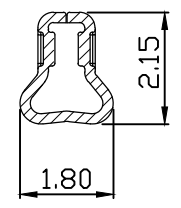
PART NO. 251600TC351
 DWG NO. C2516TC



SEC A-A



SEC B-B



SEC C-C

NOTE:

1. Terminal Material:
Phosphor bronze
2. Plated: Tin-plated 50u"min.
3. Applicable wires: AWG#28-#22
4. Insulation O.D.: 1.0-1.5mm
5. Q'ty / reel:10,000 pcs

REV.	REVISION	DIS	DATE

SCALE	REV.	PAGE:	UNIT	mm	DWG NO:	PART.NO
5/1	A	1/1	THIRD ANGLE PROJECTION		C2516TC	C251600TC351

UNLESS OTHERWISE SPECIFIED TOLERANCES
 3 PLACE ±0.5 ±0.10
 2 PLACE ±1.5 ±0.35
 1 PLACE ±2.0 ±0.50
 ANGLE DIM



10 9 8 7 6 5 4 3 2 1