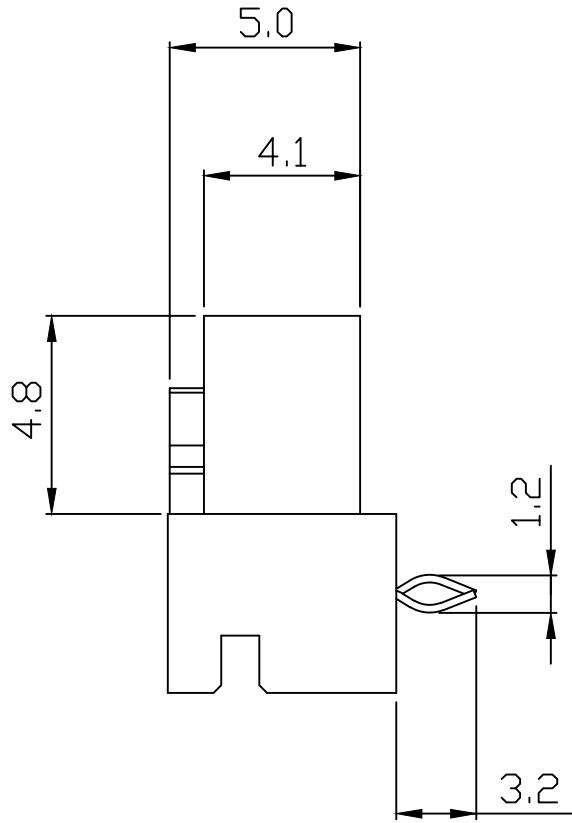
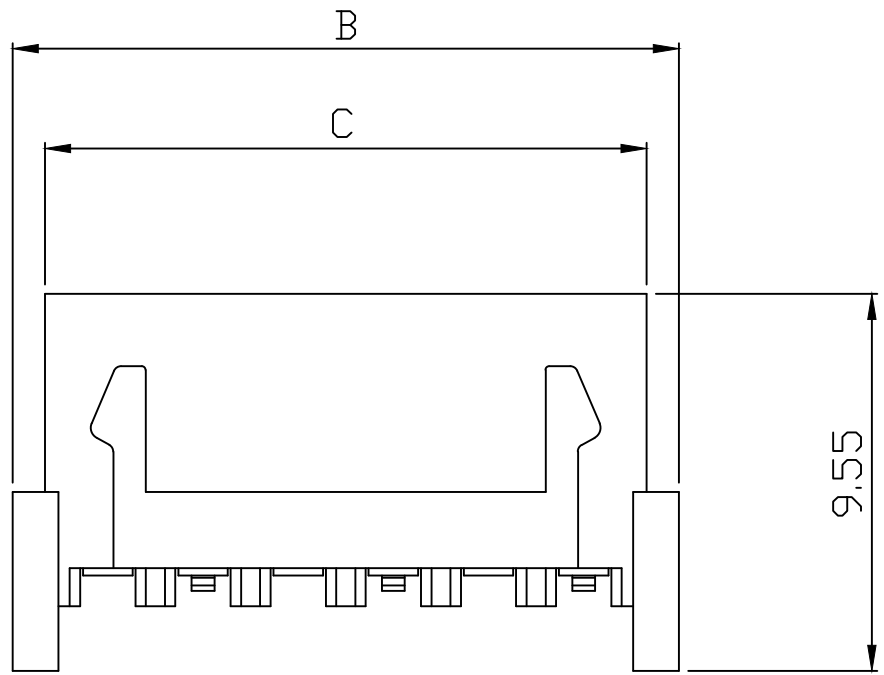
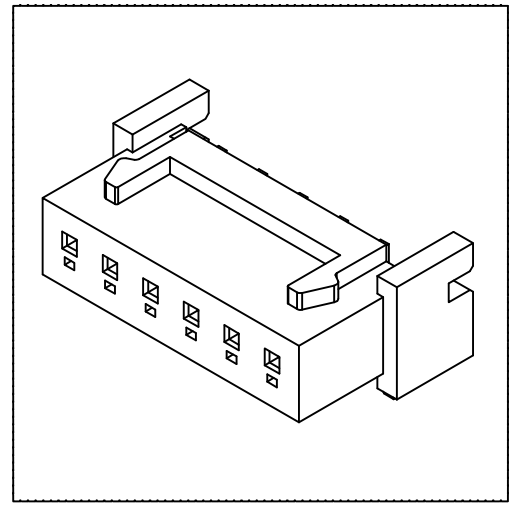
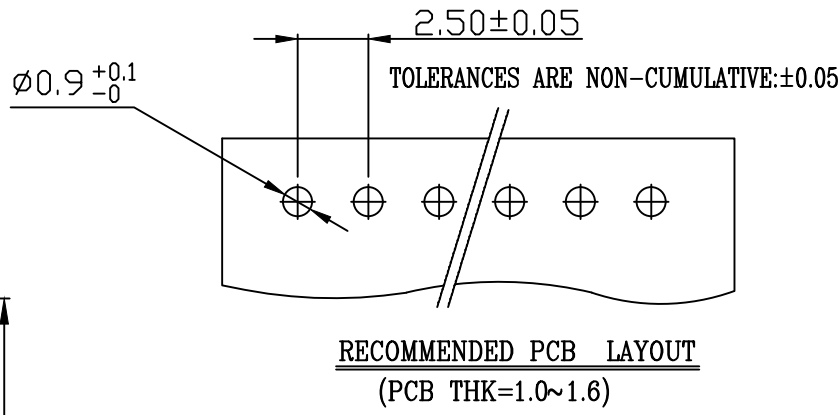
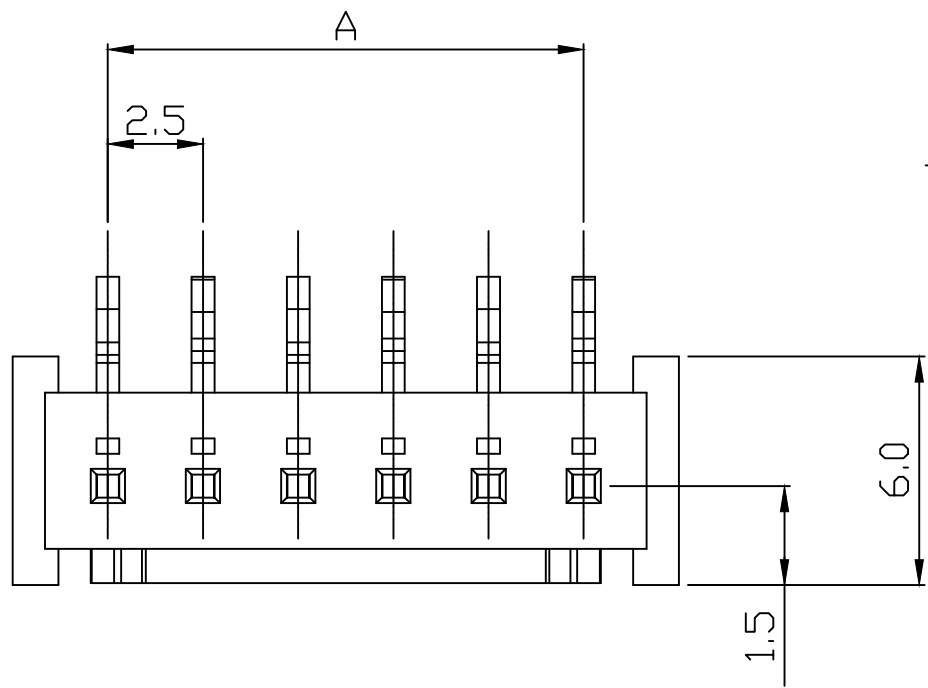


PART NO. 2515xxWR001
 DWG NO. C2515WR



Dimensional & Ordering Information:

Part No.	Circuits	Dim A	Dim B	Dim C
251503WR001	3	5.00	10.00	8.20
251504WR001	4	7.50	12.50	10.70
251505WR001	5	10.00	15.00	13.20
251506WR001	6	12.50	17.50	15.70
251507WR001	7	15.00	20.00	18.20
251508WR001	8	17.50	22.50	20.70
251509WR001	9	20.00	25.00	23.20
251510WR001	10	22.50	27.50	25.70
251511WR001	11	25.00	30.00	28.20
251512WR001	12	27.50	32.50	30.70
251513WR001	13	30.00	35.00	33.20
251514WR001	14	32.50	37.50	35.70
251515WR001	15	35.00	40.00	38.20

NOTE:

- Housing Material: Nylon 66 UL94V-0
Pin/Pos Material: brass bronze.
- Plated: Tin-plated 50u"min.
- Insulation resistance: 1000MΩ min.
- Withstand voltage: 800V AC/minute.
- Current rating: 3A AC/DC.
- Voltage rating: 250V AC/DC

REV.	REVISION	DIS	DATE
SCALE	REV.	PAGE:	UNIT
4/1	A	1	mm

THIRD ANGLE PROJECTION

UNLESS OTHERWISE SPECIFIED TOLERANCES
 3 PLACE ±0.5 ±0.10
 2 PLACE ±1.5 ±0.35
 1 PLACE ±2.0 ±0.50
 ANGLE DIM

EXCON
 EXCON TECHNOLOGY COMPANY

SCALE	REV.	PAGE:	UNIT	mm	DWG NO:	PART.NO
4/1	A	1	mm		C2515WR	2515xxWR001