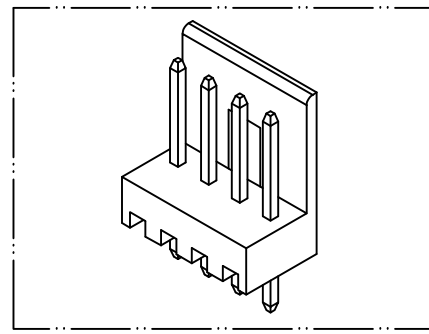
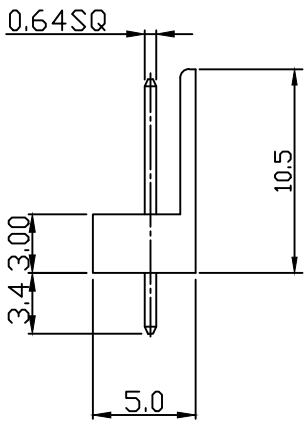
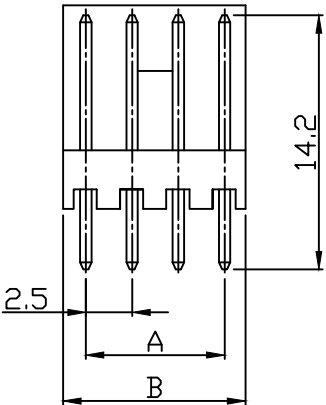
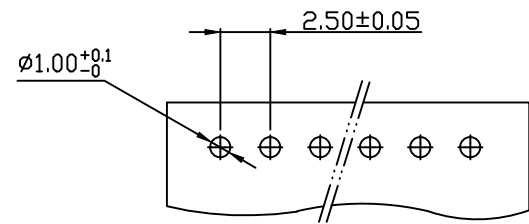


PART NO. 2510xxWV001  
 DWG NO. C2510WV



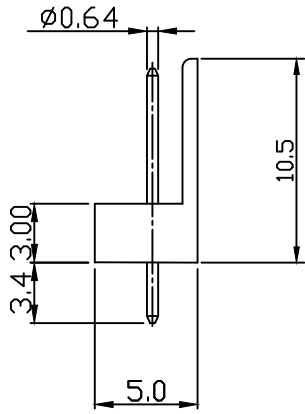
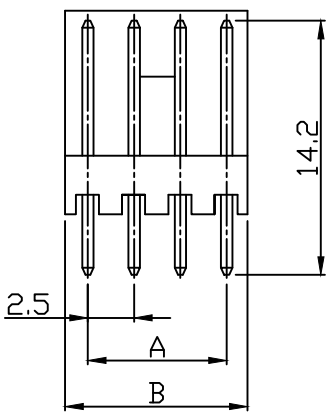
TOLERANCES ARE NON-CUMULATIVE:±0.05



RECOMMENDED PCB LAYOUT  
 (PCB THK=1.0~1.6)

Dimensional & Ordering Information:

Part No.		Circuits	Dim A	Dim B
PIN:ø0.64	PIN:SQ0.64			
251002WT001	251002WV001	2	2.50	5.00
251003WT001	251003WV001	3	5.00	7.50
251004WT001	251004WV001	4	7.50	10.00
251005WT001	251005WV001	5	10.00	12.50
251006WT001	251006WV001	6	12.50	15.00
251007WT001	251007WV001	7	15.00	17.50
251008WT001	251008WV001	8	17.50	20.00
251009WT001	251009WV001	9	20.00	22.50
251010WT001	251010WV001	10	22.50	25.00
251011WT001	251011WV001	11	25.00	27.50
251012WT001	251012WV001	12	27.50	30.00



2510xxWV001

2510xxWT001

NOTE:

1. Wafer Material: Nylon 66 UL94V-0  
Pin/Pos Material: brass bronze.
2. Plated: Tin-plated 50u"min.
3. Insulation resistance: 1000MΩ min.
4. Withstand voltage: 1000V AC/minute.
5. Current rating: 3A AC/DC.
6. Voltage rating: 250V AC/DC

REV.	REVISION	DIS	DATE
4/1	A	1	

UNLESS OTHERWISE SPECIFIED TOLERANCES  
 3 PLACE ±0.5 ±0.10  
 2 PLACE ±1.5 ±0.25  
 1 PLACE ±2.0 ±0.50  
 ANGLE DIM

**EXCON**  
 EXCON TECHNOLOGY COMPANY

SCALE	REV.	PAGE:	UNIT	mm	DWG NO:	PART.NO
4/1	A	1	THIRD ANGLE PROJECTION		C2510WV	2510xxWV001