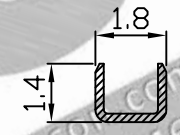
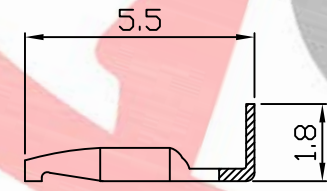
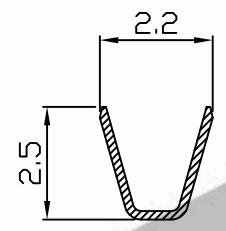
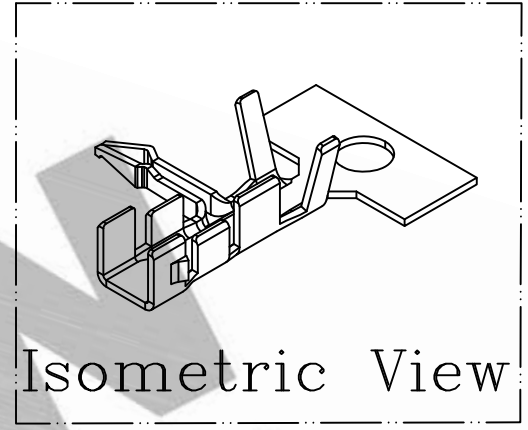
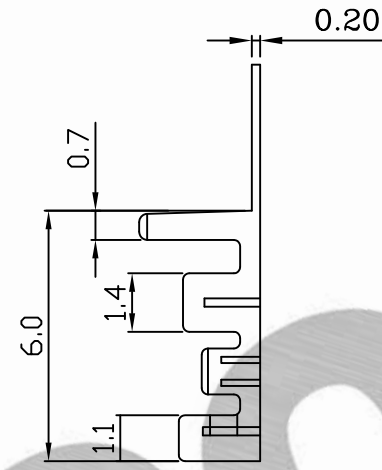
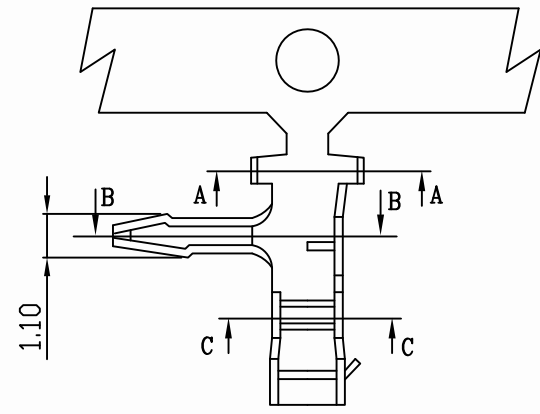


PART NO. 250900TRxxx
 DWG NO. C2509TR



NOTE:

1. Terminal Material: See table
2. Plated: Tin Pre-plated or Tin-plated 50u"min.
3. Current rating : 2.5A AC/DC
4. Voltage rating : 250V AC/DC
5. Withstand voltage : 800V AC/minute
6. Insulation resistance : 1000MΩ min
7. Applicable wires: AWG#28-#22
8. Insulation O.D.: 1.2-1.9mm
9. Q'ty / reel:10,000pcs

Part No.	Wire Range	Finishing
250900TR001	Brass	Tin plated
250900TR051		Tin pre-plated
250900TR301	Phosphor	Tin plated
250900TR351		Tin pre-plated

B		DWG RELEASE		christy	9/1
REV.	REVISIONI			DIS	DATE
SCALE	REV.	PAGE:	UNIT	mm	
4/1	B	1/1	THIRD ANGLE	PROJECTION	

UNLESS OTHERWISE SPECIFIED TOLERANCES
 3 PLACE ±0.5 ±0.10
 2 PLACE ±1.5 ±0.25
 1 PLACE ±2.0 ±0.50
 ANGLE DIM



DWG NO:			PART.NO		
C2509TR			250900TRXXX		