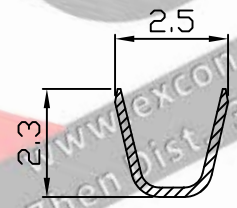
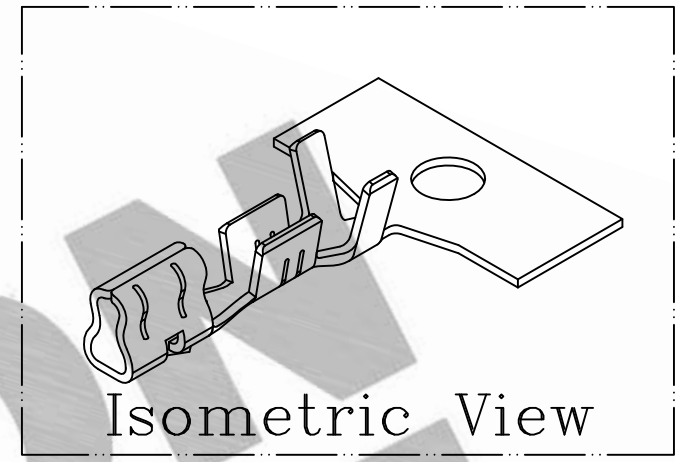
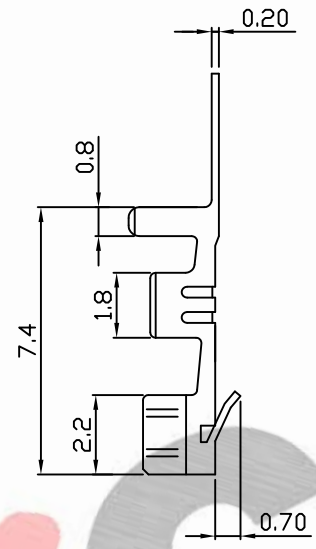
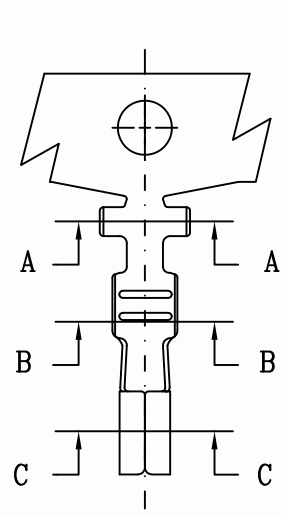
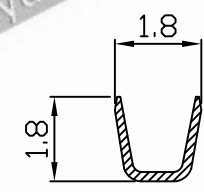


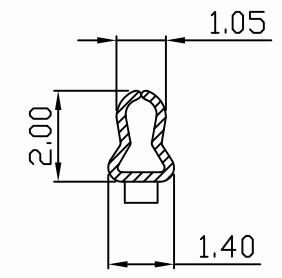
PART NO. 250300TC351  
 DWG NO. C2503TC



SEC A-A



SEC B-B



SEC C-C

NOTE:

1. Terminal Material: phosphor bronze.
- △ 2. Plated: Tin Pre-plated 50u"min.
- △ 3. Current rating: 3A AC/DC
- △ 4. Voltage rating: 250V AC/DC
- △ 5. Withstand voltage: 800V AC/minute
- △ 6. Insulation resistance: 1000MΩ mm m
7. Applicable wires: AWG#28-#22
8. Insulation O.D.: 1.2-1.9mm
9. Q'ty / reel: 10,000cs

				UNLESS OTHERWISE SPECIFIED TOLERANCES		<b>EXCON</b> <b>EXCON TECHNOLOGY COMPANY</b>	
NOTE: 修改 第2項 Tin-Plated → Tin Pre-Plated 新增 第3、4、5、6項				christy	5/13 2015		
REV.	REVISIONI			DIS	DATE	2 PLACE ±1.5 ±0.25	PART.NO
SCALE	REV.	PAGE:	UNIT	mm		1 PLACE ±2.0 ±0.50	
8/1	B	1/1	THIRD ANGLE PROJECTION			ANGLE DIM	250300TC351

