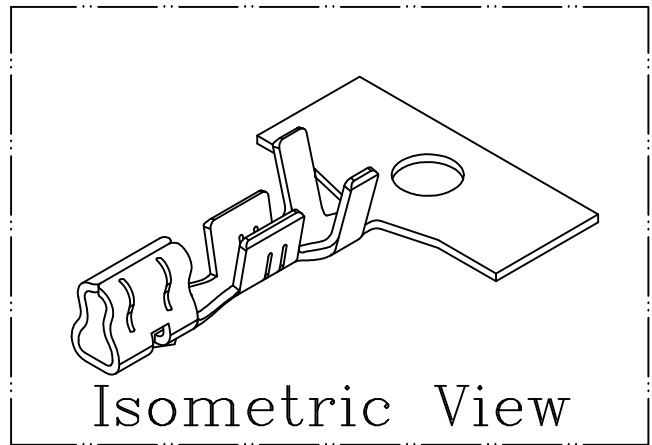
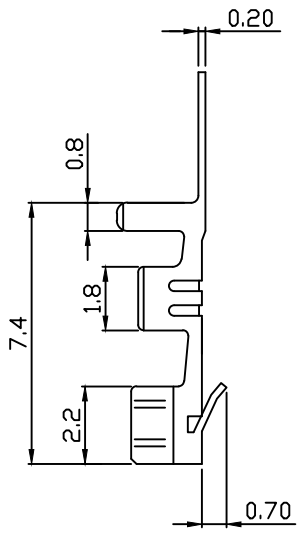
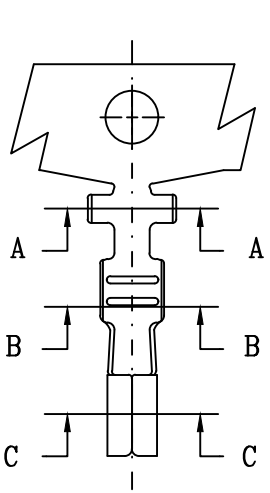


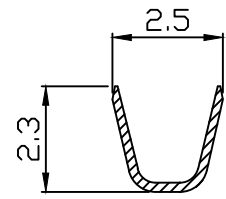
10 9 8 7 6 5 4 3 2 1

PART NO. 250300TC351  
 DWG NO. C2503TC

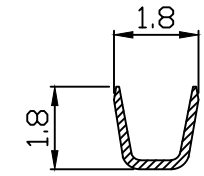


NOTE:

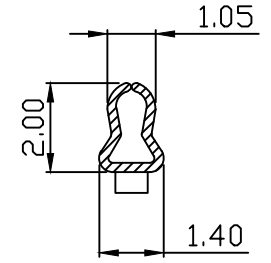
1. Terminal Material: phosphor bronze.
- △ 2. Plated: Tin Pre-plated 50u"min.
- △ 3. Current rating: 3A AC/DC
- △ 4. Voltage rating: 250V AC/DC
- △ 5. Withstand voltage: 800V AC/minute
- △ 6. Insulation resistance:1000MΩ
7. Applicable wires: AWG#28-#22
8. Insulation O.D.: 1.2-1.9mm
9. Q'ty / reel: 10,000cs



SEC A-A



SEC B-B



SEC C-C

				UNLESS OTHERWISE SPECIFIED TOLERANCES		 EXCON TECHNOLOGY COMPANY	
NOTE: 修改 第2項 Tin-Plated → Tin Pre-Plated 新增 第3、4、5、6項				christy	5/13 2015		
REV.	REVISIONI			DIS	DATE	2 PLACE ±1.5 ±0.25	PART.NO
SCALE	REV.	PAGE:	UNIT	mm		DWG NO:	
8/1	B	1/1	THIRD ANGLE PROJECTION			C2503TC	250300TC351

10 9 8 7 6 5 4 3 2 1