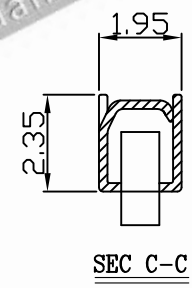
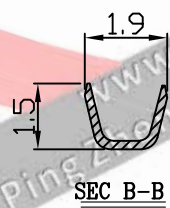
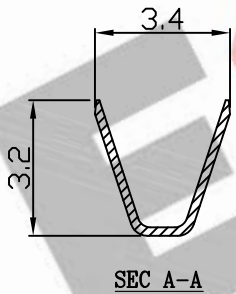
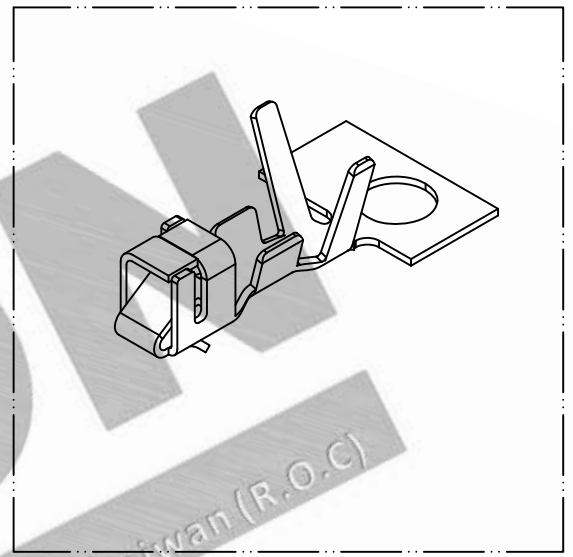
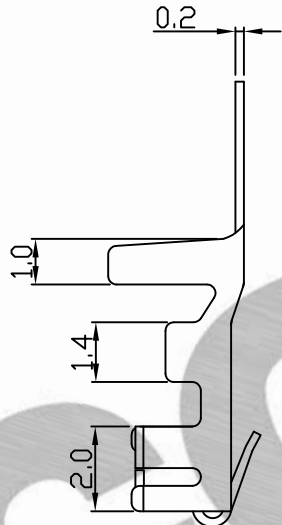
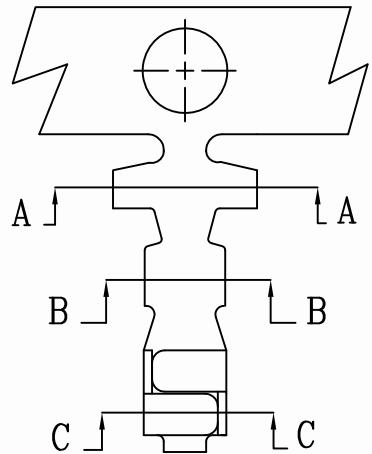


10 9 8 7 6 5 4 3 2 1

PART NO. 250100TCxxx
 DWG NO. C2501TC



NOTE:

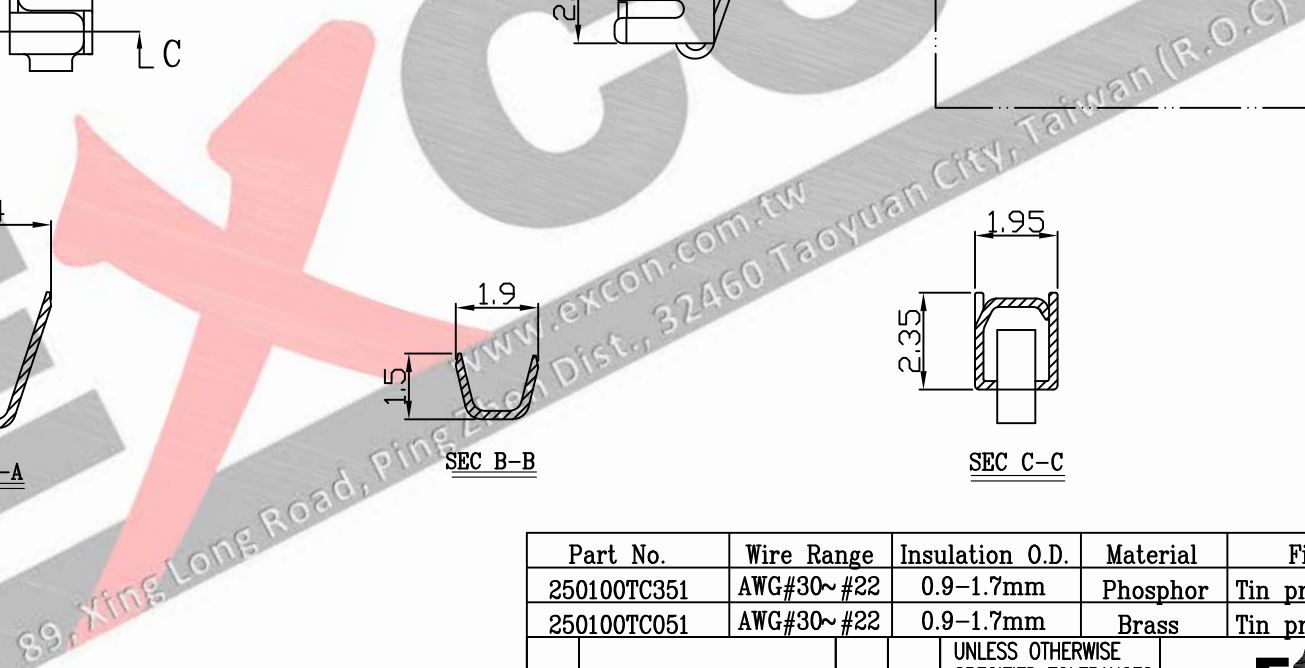
1. Terminal Material:
Brass bronze
2. Plated: Tin-plated 50u"min.
3. Applicable wires: AWG#30-#22
4. Insulation O.D.: 0.9-1.9mm
5. Q'ty / reel:7,000 pcs

Part No.	Wire Range	Insulation O.D.	Material	Finish	Q'ty/reel
250100TC351	AWG#30~#22	0.9-1.7mm	Phosphor	Tin pre-plated	7,000pcs
250100TC051	AWG#30~#22	0.9-1.7mm	Brass	Tin pre-plated	7,000pcs

UNLESS OTHERWISE SPECIFIED TOLERANCES
 3 PLACE ±0.5 ±0.10
 2 PLACE ±1.5 ±0.25
 1 PLACE ±2.0 ±0.50
 ANGLE DIM



REV.	REVISION	DIS	DATE	SCALE	REV.	PAGE:	UNIT	mm	DWG NO:	PART.NO
5/1	B	1					THIRD ANGLE PROJECTION		C2501TC	250100TCxxx



F
E
D
C
B
A

10 9 8 7 6 5 4 3 2 1