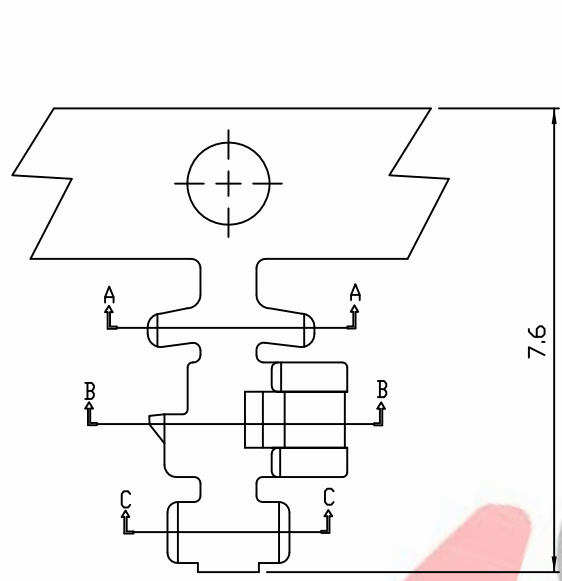
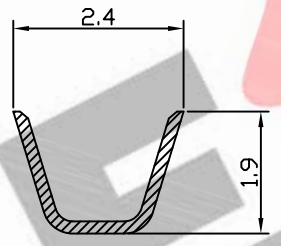
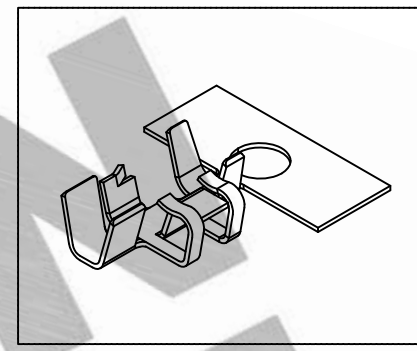
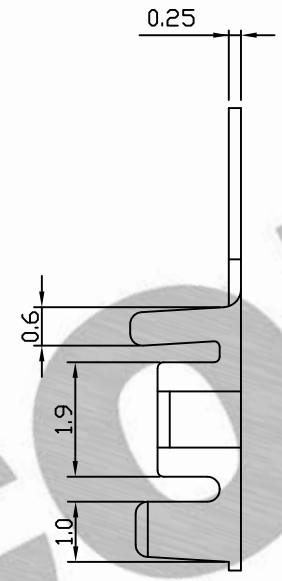


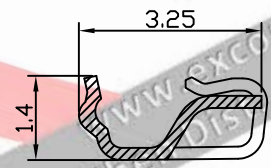
PART NO. 200600TCxxx
 DWG NO. C2006TC



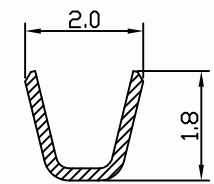
7.6



SEC A-A



SEC B-B



SEC C-C

NOTE:

1. Terminal Material: Phosphor bronze
2. Plated: Ni 25u"min Tin-plated 50u"min.
3. Applicable wires: AWG#30-#24
4. Q'ty / reel:15,000 pcs

Part No.	Wire Range	Insulation O.D.	Material	Finishing	Q'ty/reel
200600TC301	AWG#30~#24	0.9-1.5mm	Phosphor	Tin plated	15,000pcs
200600TC351	AWG#30~#24	0.9-1.5mm	Phosphor	Tin Pre-plated	15,000pcs

REV.	REVISION	DIS	DATE
4/1	A	1	

UNLESS OTHERWISE SPECIFIED TOLERANCES
 3 PLACE ±0.5 ±0.10
 2 PLACE ±1.5 ±0.35
 1 PLACE ±2.0 ±0.50
 ANGLE DIM



SCALE	REV.	PAGE:	UNIT	mm	DWG NO:	PART.NO
4/1	A	1	THIRD ANGLE PROJECTION		C2006TC	200600TCxxx