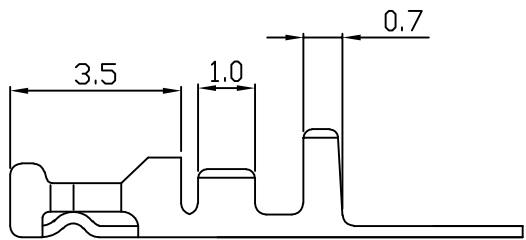
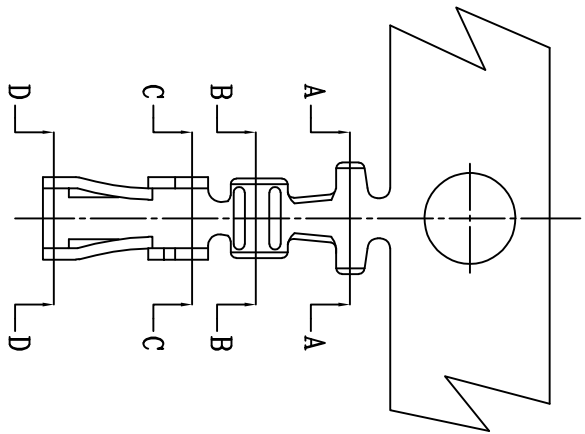
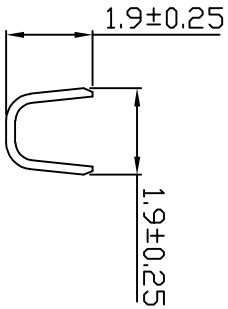
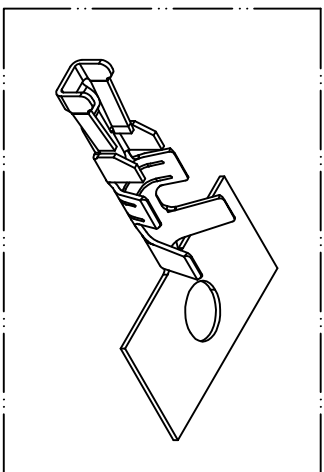


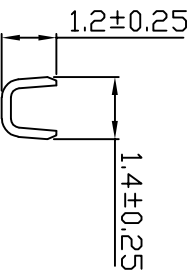
PART NO.
200500TC501
DWG NO.
C2005TC



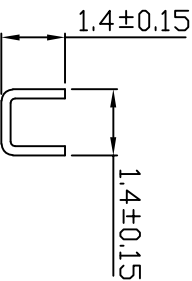
- NOTE:
1. Terminal Material: Phosphor
 2. Plated: Gold-flash.
 3. Applicable wires: AWG #30-#26
 4. Insulation O.D.: 0.9-1.3mm
 5. Qty / reel: 20,000 pcs



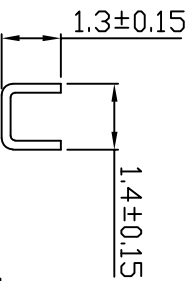
SEC A-A



SEC B-B



SEC C-C



SEC D-D

No.	Part No.	Material	Material NO.	Finish
1	200500TC951	phosphor	020105TR3951	No plated
2	200500TC501		200500TC951	Gold flash

UNLESS OTHERWISE SPECIFIED TOLERANCES

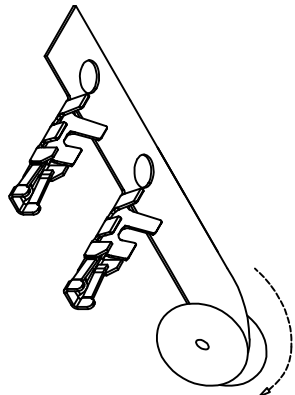
3 PLACE	±0.5	±0.10
2 PLACE	±1.5	±0.25
1 PLACE	±2.0	±0.50

ANGLE DIM



EXCON TECHNOLOGY COMPANY

REV.	REVISION	DIS	DATE	SCALE	REV.	PAGE	UNIT	THIRD ANGLE PROJECTION	DWG NO:	PART NO
							mm		C2005TC	200500TC501
NONE					B	1				



10 9 8 7 6 5 4 3 2 1

A B C D E F