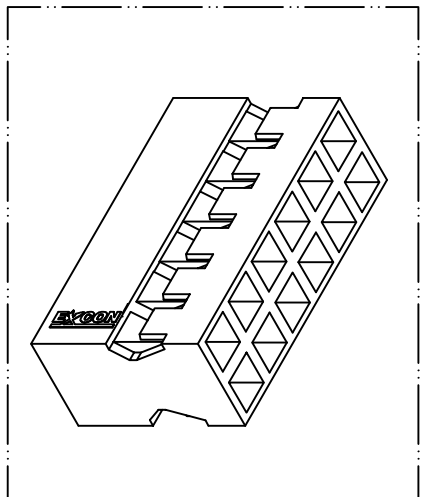
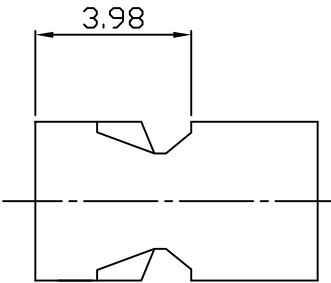
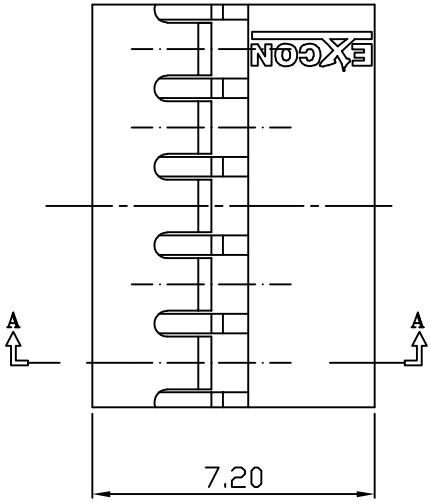
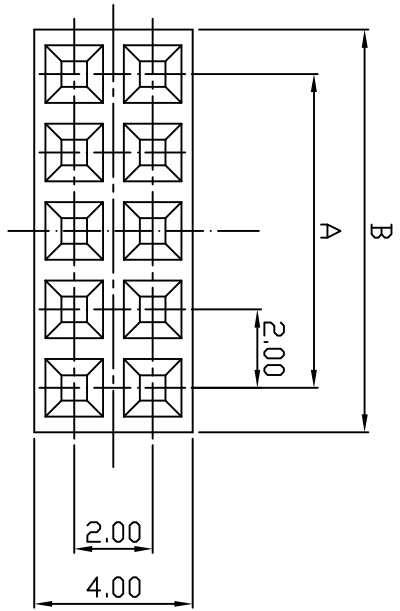


PART NO. 2005xxHA003
 DWG NO. C2005HA



Dimensional & Ordering Information:

Part No.	Circuits	Dim. A	Dim. B
200504HA003	4	2.00	4.26
200506HA003	6	4.00	6.26
200508HA003	8	6.00	8.26
200510HA003	10	8.00	10.26
200512HA003	12	10.00	12.26
200514HA003	14	12.00	14.26
200516HA003	16	14.00	16.26
200518HA003	18	16.00	18.26
200520HA003	20	18.00	20.26
200522HA003	22	20.00	22.26
200524HA003	24	22.00	24.26
200526HA003	26	24.00	26.26
200528HA003	28	26.00	28.26
200530HA003	30	28.00	30.26
200532HA003	32	30.00	32.26
200534HA003	34	32.00	34.26
200536HA003	36	34.00	36.26
200538HA003	38	36.00	38.26
200540HA003	40	38.00	40.26

NOTE:

- Housing Material: Nylon 66 UL94 V0
- Color: Black
- Use Material: CM3004G15
- Current rating: 2.5A AC/DC
- Voltage rating: 200V AC/DC
- Withstand voltage: 1000V AC/minute

UNLESS OTHERWISE SPECIFIED TOLERANCES
 3 PLACE ±0.5 ±0.10
 2 PLACE ±1.5 ±0.25
 1 PLACE ±2.0 ±0.50
 ANGLE DIM



EXCON TECHNOLOGY COMPANY

REV.	REV.	PAGE	UNIT	DIS	DATE
SCALE	REV.	PAGE:	UNIT	DIS	DATE
NONE	B	1	THIRD ANGLE PROJECTION	⊕	

DWG NO: C2005HA

PART NO: 2005xxHA003