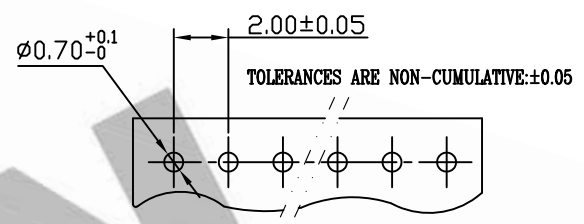
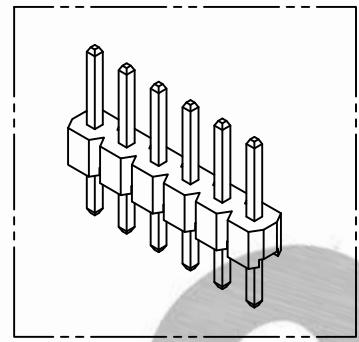
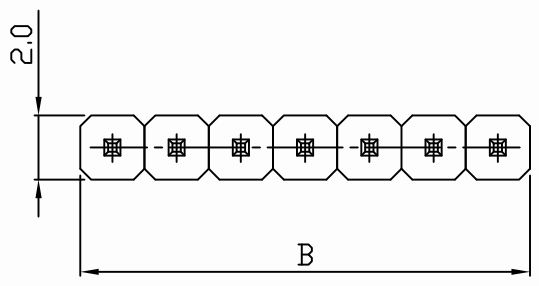
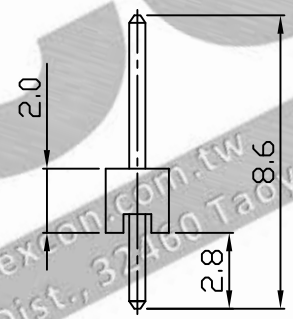
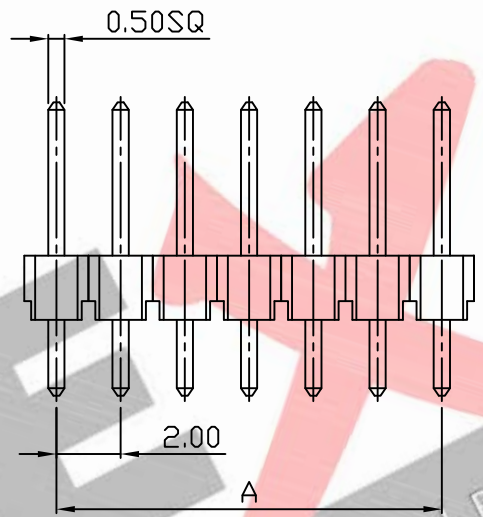


PART NO. 2004xxWV203
 DWG NO. C2004WV



RECOMMENDED PCB LAYOUT
 (PCB THK=1.0~1.6)



Dimensional & Ordering Information:

Part No.	Circuits	Dim A	Dim B
200401WV203	1	--	2.00
200402WV203	2	2.00	4.00
200403WV203	3	4.00	6.00
200404WV203	4	6.00	8.00
200405WV203	5	8.00	10.00
200406WV203	6	10.00	12.00
200407WV203	7	12.00	14.00
200408WV203	8	14.00	16.00
200409WV203	9	16.00	18.00
200410WV203	10	18.00	20.00
200411WV203	11	20.00	22.00
200412WV203	12	22.00	24.00
200413WV203	13	24.00	26.00
200414WV203	14	26.00	28.00
200415WV203	15	28.00	30.00
200416WV203	16	30.00	32.00
200417WV203	17	32.00	34.00
200418WV203	18	34.00	36.00
200419WV203	19	36.00	38.00
200420WV203	20	38.00	40.00

NOTE:

1. Wafer Material: PBT UL94V-0
Pin/Pos Material: brass bronze.
2. Plated: Gold flash
3. Insulation resistance: 1000MΩ min.
4. Withstand voltage: 1000V AC/minute.
5. Current rating: 2.5A AC/DC.
6. Voltage rating: 200V AC/DC

UNLESS OTHERWISE SPECIFIED TOLERANCES			
3 PLACE ±0.5 ±0.10			
2 PLACE ±1.5 ±0.25			
1 PLACE ±2.0 ±0.50			
ANGLE DIM			
REV.	REVISION		DIS DATE
SCALE	REV.	PAGE:	UNIT mm
4/1	A	1	THIRD ANGLE PROJECTION

EXCON
 EXCON TECHNOLOGY COMPANY

PART.NO
 2004xxWV203