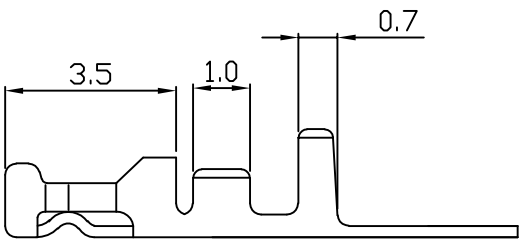
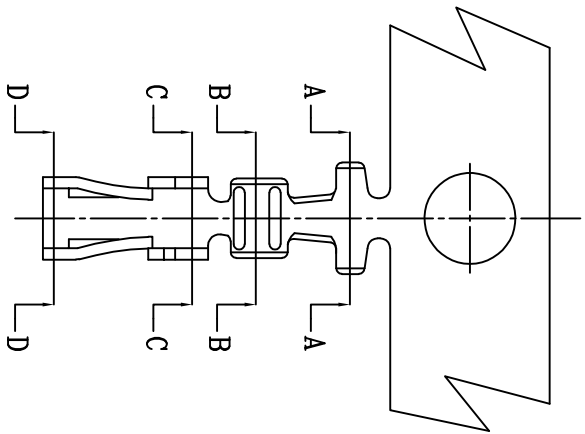
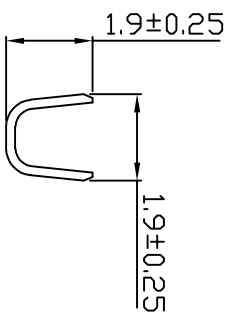
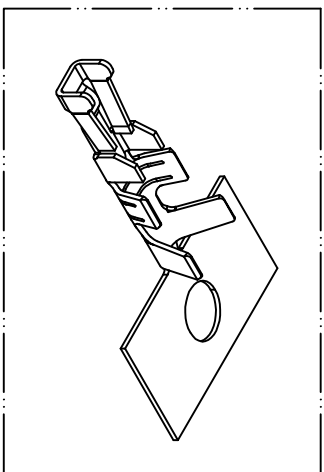


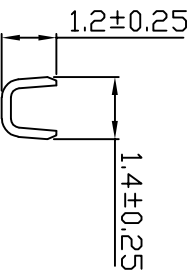
PART NO.  
200400TC501  
DWG NO.  
C2004TC



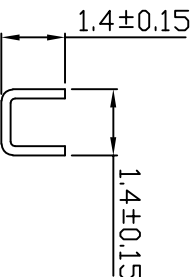
- NOTE:
1. Terminal Material: Phosphor
  2. Plated: Gold-flash.
  3. Applicable wires: AWG #30-#26
  4. Insulation O.D.: 0.9-1.3mm
  5. Q'ty / reel: 20,000 pcs



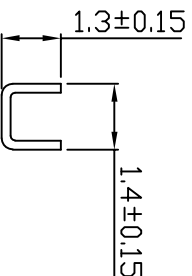
SEC A-A



SEC B-B



SEC C-C



SEC D-D

No.	Part No.	Material	Material NO.	Finish
1	200400TC951	phosphor	020105TR3951	No plated
2	200400TC501		200400TC951	Gold flash

UNLESS OTHERWISE SPECIFIED TOLERANCES  
 3 PLACE ±0.5 ±0.10  
 2 PLACE ±1.5 ±0.25  
 1 PLACE ±2.0 ±0.50  
 ANGLE DIM



EXCON TECHNOLOGY COMPANY

REV.	REVISION	DIS	DATE	DWG NO.	PART NO.
SCALE	REV.	PAGE:	UNIT	THIRD ANGLE PROJECTION	
NONE	B	1			

