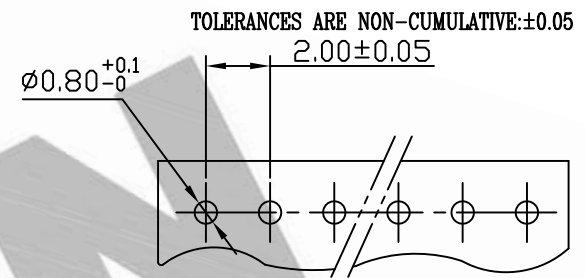
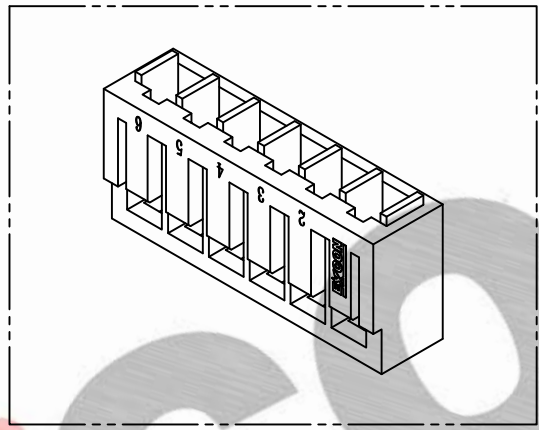
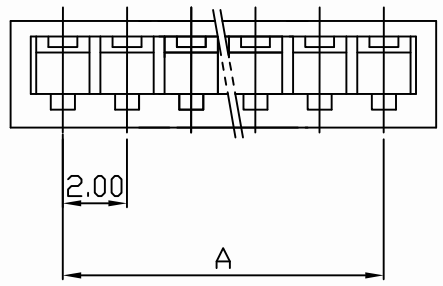
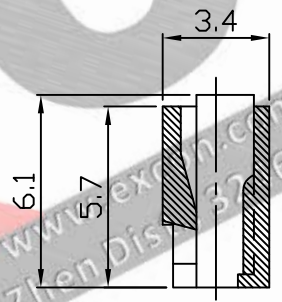
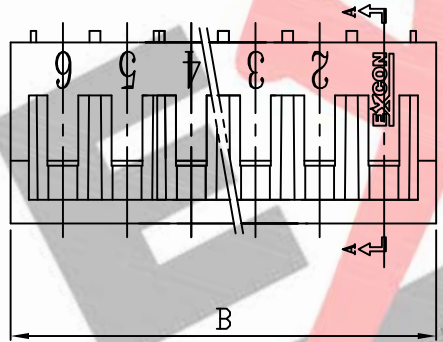


PART NO. 2002xxHV001  
 DWG NO. C2002HV



TOLERANCES ARE NON-CUMULATIVE:  $\pm 0.05$   
RECOMMENDED PCB LAYOUT  
 (PCB THK=1.0~1.6)



SEC A-A

**Dimensional & Ordering Information:**

Part No.	Circuits	Dim A	Dim B
200202HV001	2	2.00	5.20
200203HV001	3	4.00	7.20
200204HV001	4	6.00	9.20
200205HV001	5	8.00	11.20
200206HV001	6	10.00	13.20
200207HV001	7	12.00	15.20
200208HV001	8	14.00	17.20
200209HV001	9	16.00	19.20
200210HV001	10	18.00	21.20
200211HV001	11	20.00	23.20
200212HV001	12	22.00	25.20
200213HV001	13	24.00	27.20
200214HV001	14	26.00	29.20
200215HV001	15	28.00	31.20
200216HV001	16	30.00	33.20

**NOTE:**

- Housing Material: Nylon 66 UL94V-0
- Insulation resistance: 1000M $\Omega$  min.
- Withstand voltage: 800V AC/minute.
- Current rating: 1A AC/DC.
- Voltage rating: 100V AC/DC

UNLESS OTHERWISE SPECIFIED TOLERANCES  
 3 PLACE  $\pm 0.5 \pm 0.10$   
 2 PLACE  $\pm 1.5 \pm 0.35$   
 1 PLACE  $\pm 2.0 \pm 0.50$   
 ANGLE DIM



REV.	REVISION		DIS	DATE	DWG NO: C2002HV	PART.NO 2002xxHV001
SCALE	REV.	PAGE:	UNIT	M M		
5/1	A	1	THIRD ANGLE PROJECTION			