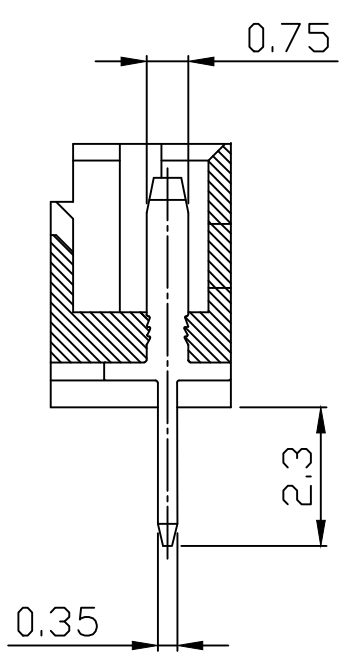
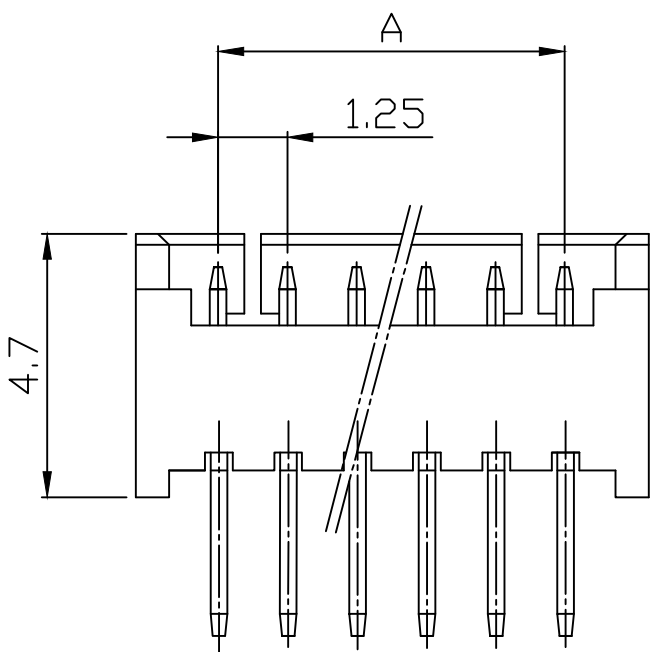
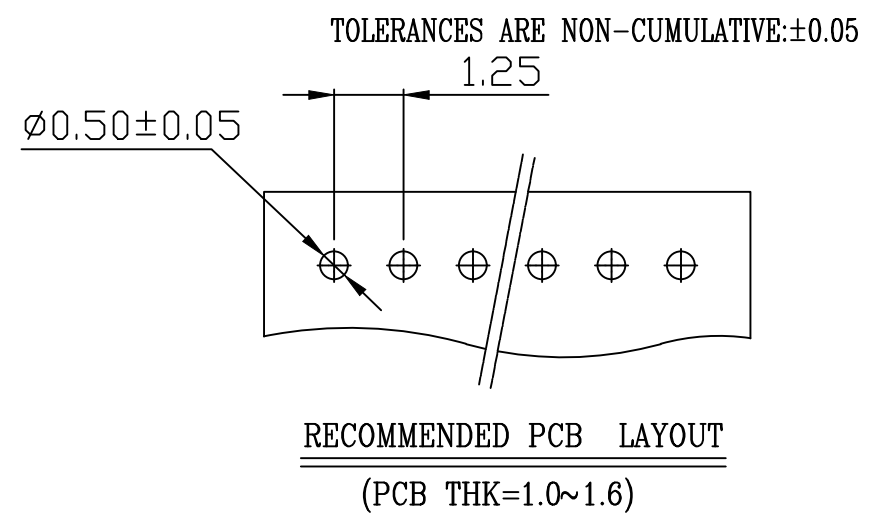
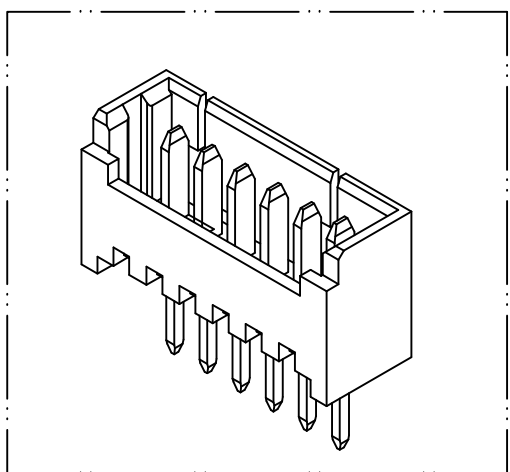
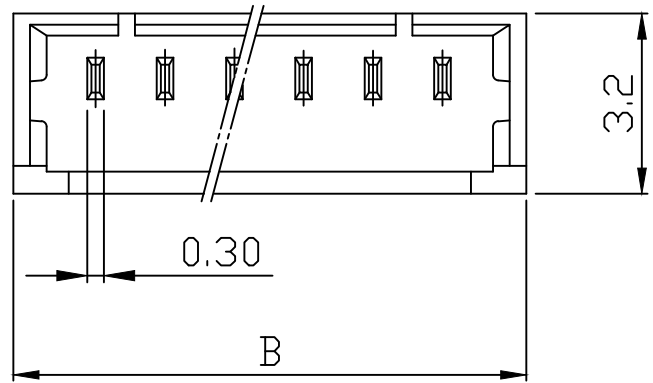


10 9 8 7 6 5 4 3 2 1

PART NO. 1251xxWV101  
 DWG NO. C1251WV



**Dimensional & Ordering Information:**

Part No.	Circuits	Dim A	Dim B
125102WV101	2	1.25	4.25
125103WV101	3	2.50	5.50
125104WV101	4	3.75	6.75
125105WV101	5	5.00	8.00
125106WV101	6	6.25	9.25
125107WV101	7	7.50	10.50
125108WV101	8	8.75	11.75
125109WV101	9	10.00	13.00
125110WV101	10	11.25	14.25
125111WV101	11	12.50	15.50
125112WV101	12	13.75	16.75
125113WV101	13	15.00	18.00
125114WV101	14	16.25	19.25
125115WV101	15	17.50	20.50

**NOTE:**

1. Wafer Material: Nylon 46
2. Plated: Tin-plated 50u"min.
3. Insulation resistance: 1000M ohm/min.
4. Withstand voltage: 250V AC/minute.
5. Current rating: 1A AC/DC.
6. Voltage rating: 100V AC/DC

REV.	REVISION	DIS	DATE
SCALE	REV.	PAGE:	UNIT
5/1	A	1	mm

UNLESS OTHERWISE SPECIFIED TOLERANCES  
 3 PLACE ±0.5 ±0.10  
 2 PLACE ±1.5 ±0.25  
 1 PLACE ±2.0 ±0.50  
 ANGLE DIM

**EXCON**  
 EXCON TECHNOLOGY COMPANY

DWG NO:	C1251WV	PART.NO	1251xxWV101
---------	---------	---------	-------------

10 9 8 7 6 5 4 3 2 1