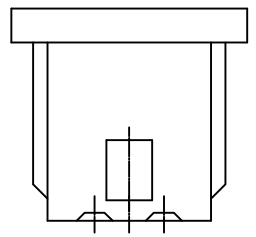
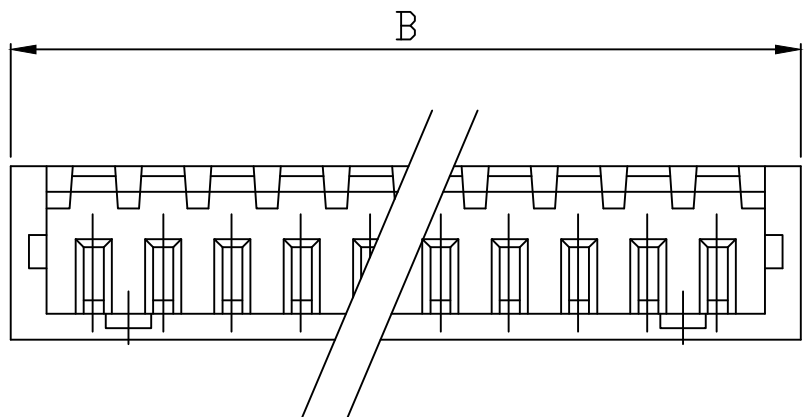
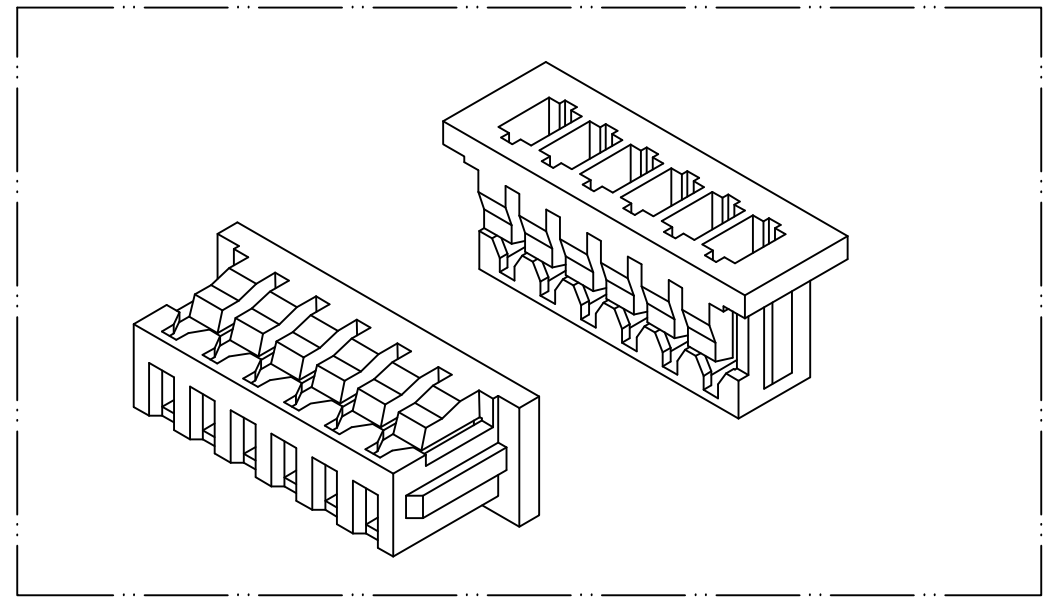
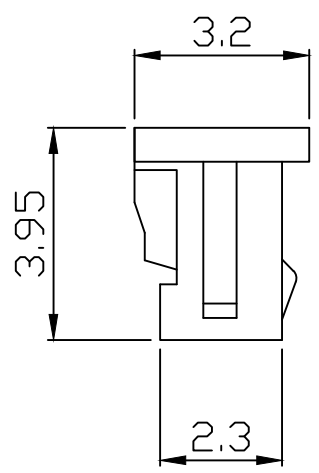
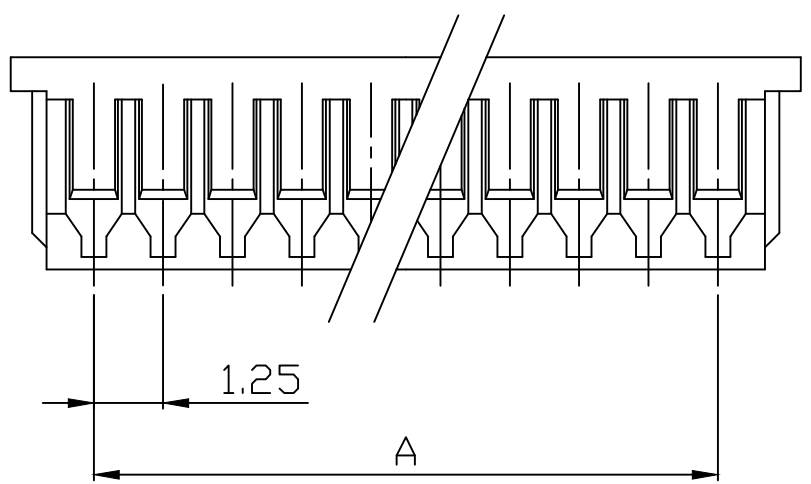
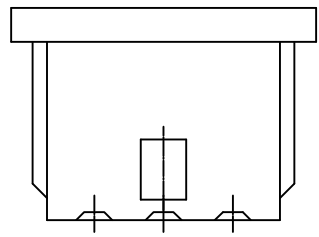


PART NO. 1251xxHA201
 DWG NO. C1251HA



ONLY 2 CIRCUITS



ONLY 3 CIRCUITS

Dimensional & Ordering Information:

Part No.	Circuits	Dim A	Dim B
125102HA201	2	1.25	4.25
125103HA201	3	2.50	5.50
125104HA201	4	3.75	6.75
125105HA201	5	5.00	8.00
125106HA201	6	6.25	9.25
125107HA201	7	7.50	10.50
125108HA201	8	8.75	11.75
125109HA201	9	10.00	13.00
125110HA201	10	11.25	14.25
125111HA201	11	12.50	15.50
125112HA201	12	13.75	16.75
125113HA201	13	15.00	18.00
125114HA201	14	16.25	19.25
125115HA201	15	17.50	20.50

NOTE:

1. Material: PBT-V0
2. Insulation resistance: 1000M ohm/min.
3. Withstand voltage: 250V AC/minute.
4. Current rating: 1A AC/DC.
5. Voltage rating: 100V AC/DC

REV.	REVISION	DIS	DATE
5/1	A	1	

SCALE: UNIT mm
 THIRD ANGLE PROJECTION

UNLESS OTHERWISE SPECIFIED TOLERANCES
 3 PLACE ±0.5 ±0.10
 2 PLACE ±1.5 ±0.25
 1 PLACE ±2.0 ±0.50
 ANGLE DIM

EXCON
 EXCON TECHNOLOGY COMPANY

DWG NO:	C1251HA	PART.NO	1251xxHA201
---------	---------	---------	-------------