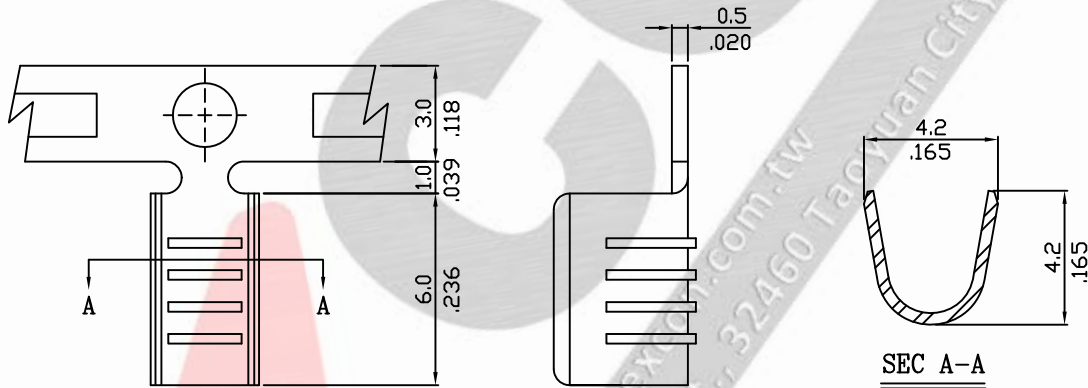
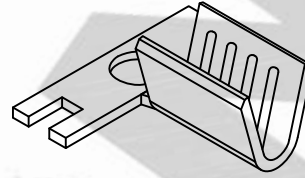


Crimp Terminal

1. Part No.:990200TC901
2. Part Name: 9902 Terminal
3. Material: Brass bronze
4. Finishing: Unplating



Ordering Information and Dimensions:

Part No.	Wire Range	Insulation O.D.	Material	Finishing	Q'ty/reel
990200TC901	AWG#10~#14	3.50mm	Brass	Unplated	5,500pcs

Part Code Information:

9902-WW XX YY

① ② ③ ④

① Series Name

② Circuits Number
00 For Terminal

③ Product Type
TC=Terminal

④ Material/Finishing/Color
901=Brass, Unplating