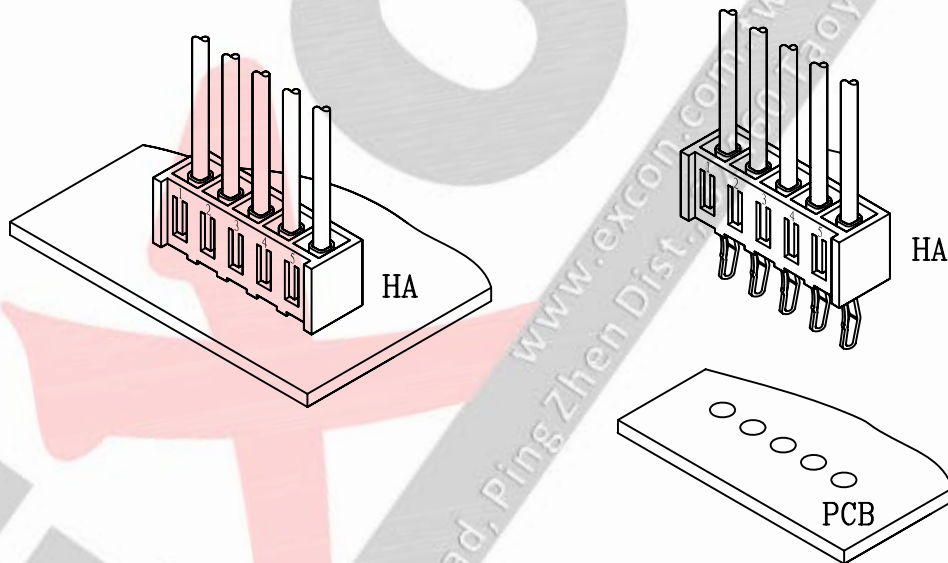


■ Specifications

1. Current rating: 7A AC/DC
2. Voltage rating: 250V AC/DC
3. Withstand voltage: 1500V AC/minute
4. Insulation resistance: 1000M ohm min
5. Contact resistance: 10m ohm max
6. Temperature range: -25°C to +105°C
7. Applicable PC board thickness: 1.0~1.6mm(.039"to .063")
8. Applicable wires: AWG#22-#18
Insulation O.D.: 1.6-3.0mm
9. Circuits: 2~12 circuits available



Part Code Information:

3970-WW XX YYY

① ② ③ ④

① Series Name

② Circuits Number

02~12

00 For Terminal

③ Product Type

HA=Housing

TC=Terminal

④ Material/Finishing/Color

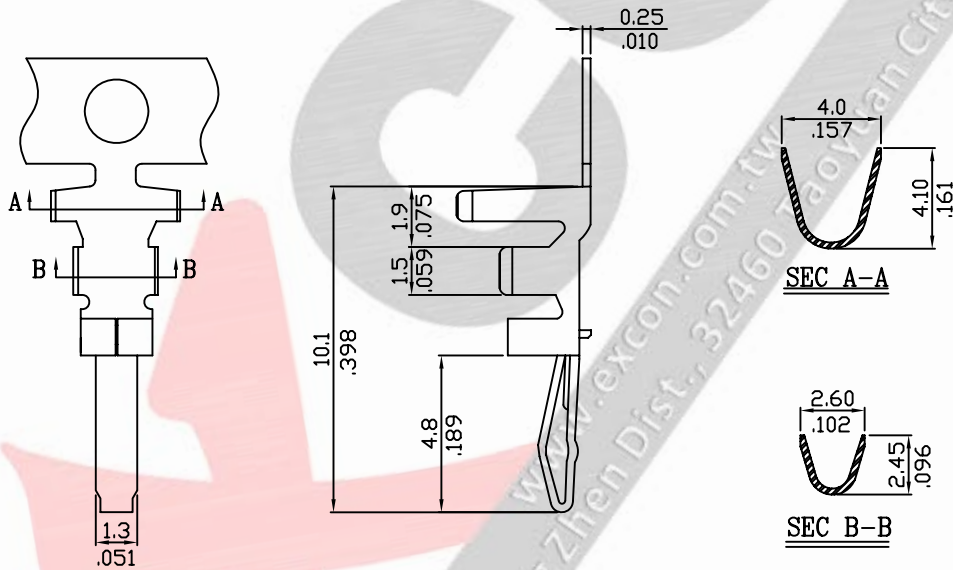
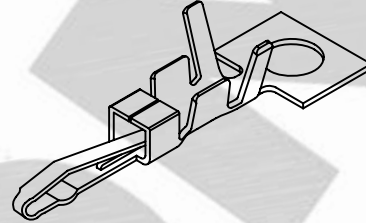
001=Brass,Tin plated

301=Phosphor,Tin plated

001=NY 66 94V-0,Natural Color

Crimp Terminal

1. Part No.: 397000TC001 397000TC001
2. Part Name: 3970 Terminal
3. Material: Phosphor or Brass bronze
4. Finishing: Tin plated



Ordering Information and Dimensions:

Part No.	Wire Range	Insulation O.D.	Material	Finishing	Q'ty/reel
397000TC001	AWG#22~#18	1.6-3.0mm	Brass	Tin plated	5,000pcs
397000TC301			Phosphor		

Part Code Information:

3970-WW XX YY

① ② ③ ④

① Series Name

② Circuits Number

00 For Terminal

③ Product Type

TC=Terminal

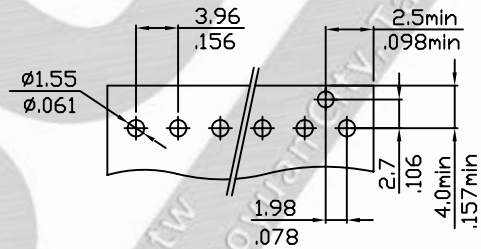
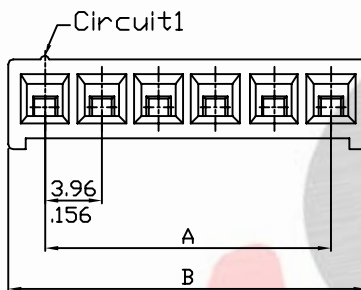
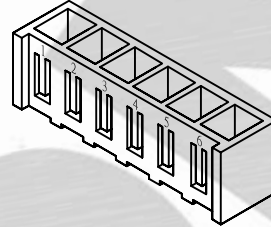
④ Material/Finishing/Color

001=Brass,Tin plated

301=Phosphor,Tin plated

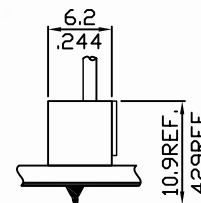
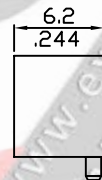
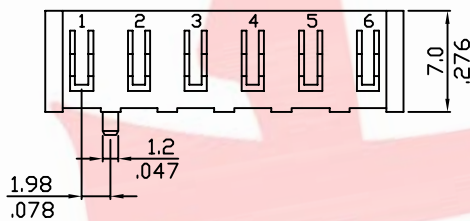
Housing

1. Part No.: 3970xxHA001
2. Part Name: 3970 Housing
3. Material: Nylon 66 UL 94V0
4. Color: Natural



RECOMMENDED PCB LAYOUT

(PCB T=0.8~1.6mm)
(PCB T=.039~.063in)



Mating Dimensions

Ordering Information and Dimensions:

Part No.	Circuits	Dim A	Dim B	Part No.	Circuits	Dim A	Dim B
397002HA001	2	3.96(.156)	8.96(.353)	397009HA001	8	27.72(1.091)	32.72(1.288)
397003HA001	3	7.92(.312)	12.92(.509)	397010HA001	9	31.68(1.247)	36.68(1.444)
397004HA001	4	11.88(.468)	16.88(.665)	397011HA001	10	35.64(1.403)	40.64(1.600)
397005HA001	5	15.84(.624)	20.84(.820)	397012HA001	11	39.60(1.559)	44.60(1.756)
397006HA001	6	19.80(.780)	24.80(.976)	397013HA001	12	43.56(1.715)	48.56(1.912)
397007HA001	7	23.76(.935)	28.76(1.132)				

Part Code Information:

3970-WW XX YY

① ② ③ ④

① Series Name

② Circuits Number

02~12

③ Product Type
HA=Housing

④ Material/Finishing/Color
001=NY 66 94V-0,Natural Color