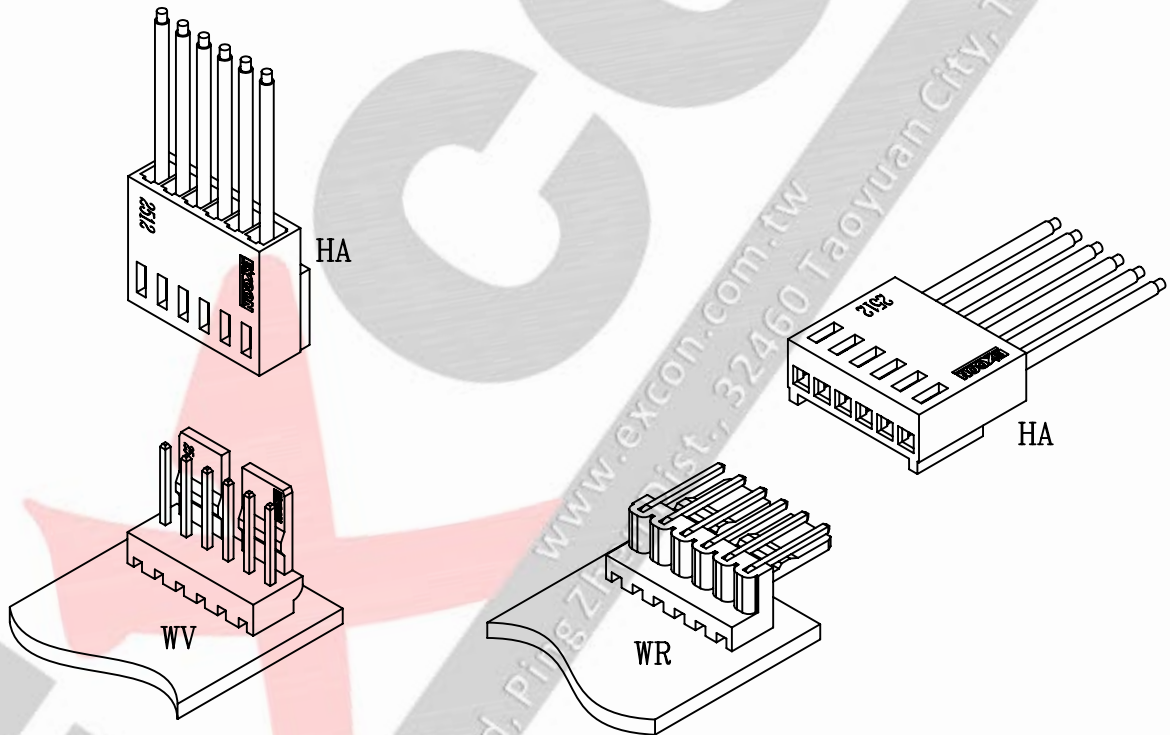


■ Specifications

1. Current rating: 3A AC/DC
2. Voltage rating: 250V AC/DC
3. Withstand voltage: 1000V AC/minute
4. Insulation resistance: 1000M Ω min
5. Contact resistance: 20m Ω max
6. Temperature range: -40°C to +105°C
7. Applicable PC board thickness: 1.0~1.6mm(.039" to .063")
8. Applicable wires: AWG#28-#22
Insulation O.D.: 1.2-1.7mm
9. Circuits: 2~20 circuits available



Part Code Information:

2512-WW XX YYY

① ② ③ ④

① Series Name

② Circuits Number
02~20

00 For Terminal

③ Product Type

HA=Housing

WV=Wafer (Vertical type)

WR=Wafer (Right angle type)

TC=Terminal

④ Material/Finishing/Color

351=Phosphor,Tin Pre-Plated

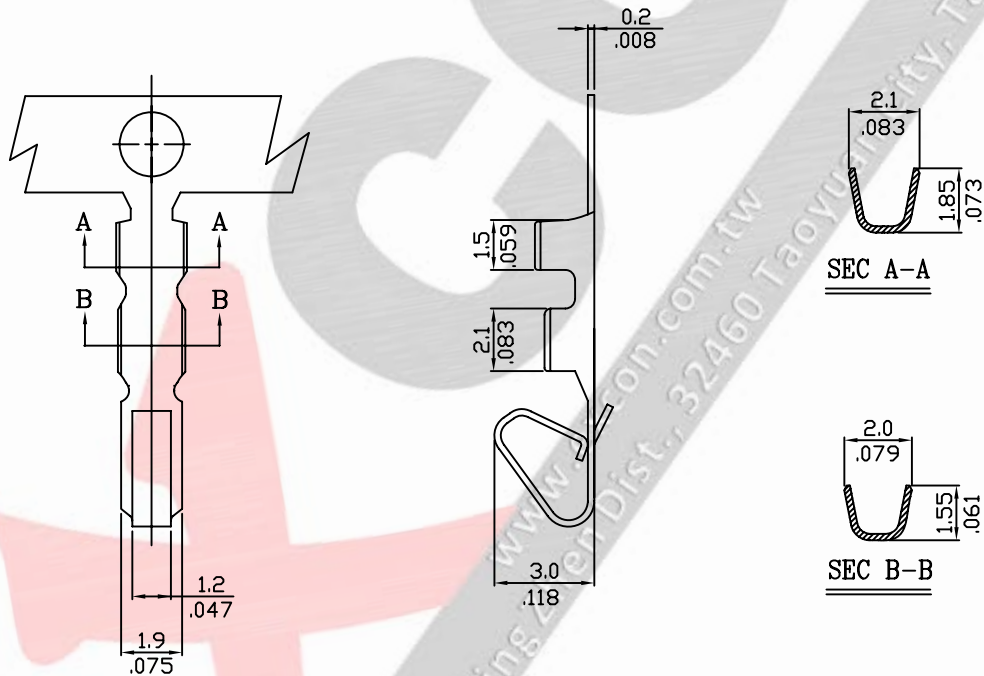
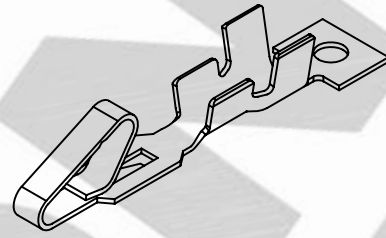
051=Brass,Tin Pre-Plated

004=NY66 94V-0, Color,Beige

054=NY66 94V-2, Color,Beige

Crimp Terminal

1. Part No.: 251200TC051 , 251200TC351
2. Part Name: 2512 Terminal
3. Material: Phosphor bronze or brass
4. Finishing: Tin pre-plated



Ordering Information and Dimensions:

Part No.	Wire Range	Insulation O.D.	Material	Finish	Q'ty/reel
251200TC051	AWG#28~#22	1.2-1.7mm	Brass	Tin pre-plated	10,000pcs
251200TC351	AWG#28~#22	1.2-1.7mm	phosphor	Tin pre-plated	10,000pcs

Part Code Information:

2512-WW XX YYY

① ② ③ ④

① Series Name

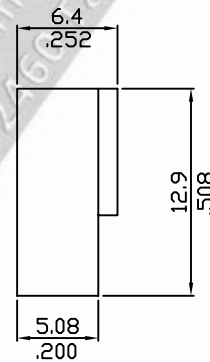
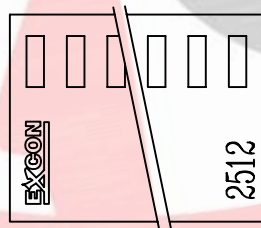
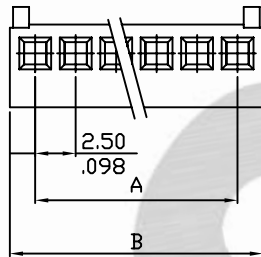
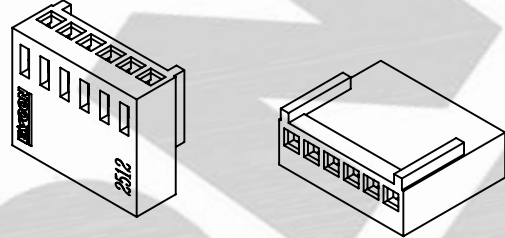
② Circuits Number
00 For Terminal

③ Product Type
TC=Terminal

④ Material/Finishing/Color
051=Brass,Tin Pre-Plated
351=Phosphor,Tin Pre-Plated

Housing

1. Part No.: 2512xxHA054,2512xxHA004
2. Part Name: 2512 Housing
3. Material: Nylon 66 UL 94V0/V2
4. Color: Beige



Ordering Information and Dimensions:

Part No.	Circuits	Dim A	Dim B	Part No.	Circuits	Dim A	Dim B
251202HA054	2	2.50(.098)	5.50(.217)	251212HA054	12	27.50(1.083)	30.50(1.201)
251203HA054	3	5.00(.197)	8.00(.315)	251213HA054	13	30.00(1.181)	33.00(1.299)
251204HA054	4	7.50(.295)	10.50(.413)	251214HA054	14	32.50(1.280)	35.50(1.398)
251205HA054	5	10.00(.394)	13.00(.512)	251215HA054	15	35.00(1.378)	38.00(1.496)
251206HA054	6	12.50(.492)	15.50(.610)	251216HA054	16	37.50(1.476)	40.50(1.594)
251207HA054	7	15.00(.591)	18.00(.709)	251217HA054	17	40.00(1.575)	43.00(1.693)
251208HA054	8	17.50(.689)	20.50(.807)	251218HA054	18	42.50(1.673)	45.50(1.791)
251209HA054	9	20.00(.787)	23.00(.906)	251219HA054	19	45.00(1.772)	48.00(1.890)
251210HA054	10	22.50(.886)	25.50(1.004)	251220HA054	20	47.50(1.870)	50.50(1.988)
251211HA054	11	25.00(.984)	28.00(1.102)				

Part Code Information:

2512-WW XX YY

① ② ③ ④

① Series Name

② Circuits Number

02~20

③ Product Type

HA=Housing

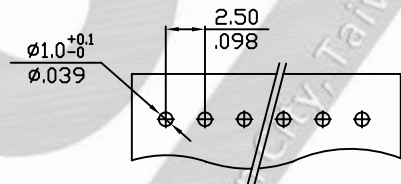
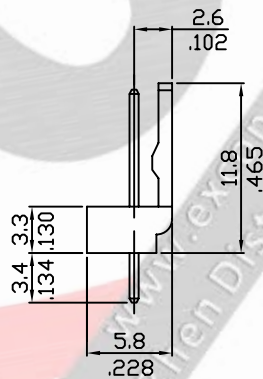
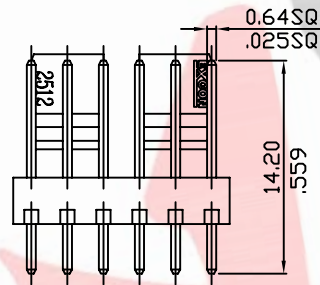
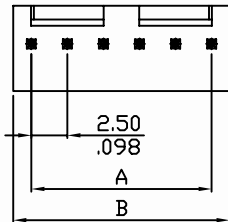
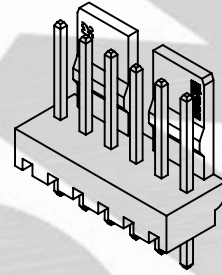
④ Material/Finishing/Color

004=NY66 94V-0, Color,Beige

054=NY66 94V-2, Color,Beige

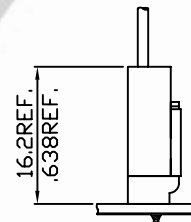
Wafer (Vertical type)

1. Part No.: 2512xxWV054, 2512xxWV004
2. Part Name: 2512 Wafer
3. Material: Nylon 66 UL 94V0/V2
Pin: Brass bronze, Plated tin
5. Color: Beige



RECOMMENDED PCB LAYOUT

(PCB T=1.0~1.6mm)
(PCB T=.039~.063in)



Mating Dimensions

Ordering Information and Dimensions:

Part No.	Circuits	Dim A	Dim B	Part No.	Circuits	Dim A	Dim B
251202WV054	2	2.50(.098)	5.00(.197)	251212WV054	12	27.50(1.083)	30.00(1.181)
251203WV054	3	5.00(.197)	7.50(.295)	251213WV054	13	30.00(1.181)	32.50(1.280)
251204WV054	4	7.50(.295)	10.00(.394)	251214WV054	14	32.50(1.280)	35.00(1.378)
251205WV054	5	10.00(.394)	12.50(.492)	251215WV054	15	35.00(1.378)	37.50(1.476)
251206WV054	6	12.50(.492)	15.00(.591)	251216WV054	16	37.50(1.476)	40.00(1.575)
251207WV054	7	15.00(.591)	17.50(.689)	251217WV054	17	40.00(1.575)	42.50(1.673)
251208WV054	8	17.50(.689)	20.00(.787)	251218WV054	18	42.50(1.673)	45.00(1.772)
251209WV054	9	20.00(.787)	22.50(.886)	251219WV054	19	45.00(1.772)	47.50(1.870)
251210WV054	10	22.50(.886)	25.00(.984)	251220WV054	20	47.50(1.870)	50.00(1.969)
251211WV054	11	25.00(.984)	27.50(1.083)				

Part Code Information:

2512-WW XX YYY

① ② ③ ④

① Series Name

② Circuits Number

02~20

③ Product Type

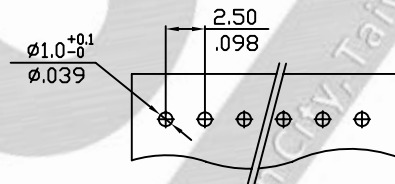
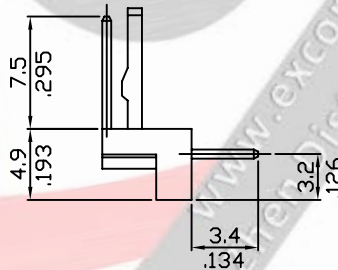
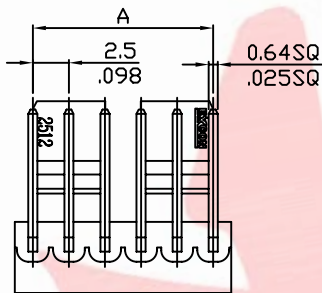
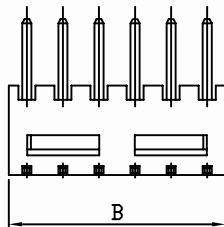
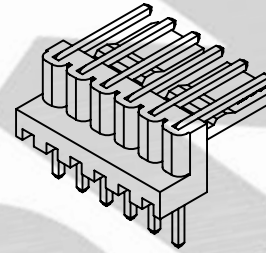
WV=Wafer (Vertical type)

④ Material/Finishing/Color

004=NY66 94V-0, Color,Beige
054=NY66 94V-2, Color,Beige

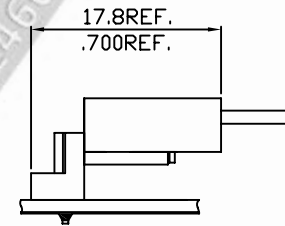
Wafer (Right angle type)

1. Part No.: 2512xxWR054,2512xxWR004
2. Part Name: 2512 Wafer
3. Material: Nylon 66 UL 94V0/V2
Pin: Brass bronze, plated tin
4. Color: Beige



RECOMMENDED PCB LAYOUT

(PCB T=1.0~1.6mm)
(PCB T=.039~.063in)



Mating Dimensions

Ordering Information and Dimensions:

Part No.	Circuits	Dim A	Dim B	Part No.	Circuits	Dim A	Dim B
251202WR054	2	2.50(.098)	5.00(.197)	251212WR054	12	27.50(1.083)	30.00(1.181)
251203WR054	3	5.00(.197)	7.50(.295)	251213WR054	13	30.00(1.181)	32.50(1.280)
251204WR054	4	7.50(.295)	10.00(.394)	251214WR054	14	32.50(1.280)	35.00(1.378)
251205WR054	5	10.00(.394)	12.50(.492)	251215WR054	15	35.00(1.378)	37.50(1.476)
251206WR054	6	12.50(.492)	15.00(.591)	251216WR054	16	37.50(1.476)	40.00(1.575)
251207WR054	7	15.00(.591)	17.50(.689)	251217WR054	17	40.00(1.575)	42.50(1.673)
251208WR054	8	17.50(.689)	20.00(.787)	251218WR054	18	42.50(1.673)	45.00(1.772)
251209WR054	9	20.00(.787)	22.50(.886)	251219WR054	19	45.00(1.772)	47.50(1.870)
251210WR054	10	22.50(.886)	25.00(.984)	251220WR054	20	47.50(1.870)	50.00(1.969)
251211WR054	11	25.00(.984)	27.50(1.083)				

Part Code Information:

2512-WW XX YYY

① ② ③ ④

① Series Name

② Circuits Number

02~20

③ Product Type

WR=Wafer (Right angle type)

④ Material/Finishing/Color

004=NY66 94V-0, Color,Beige

054=NY66 94V-2, Color,Beige