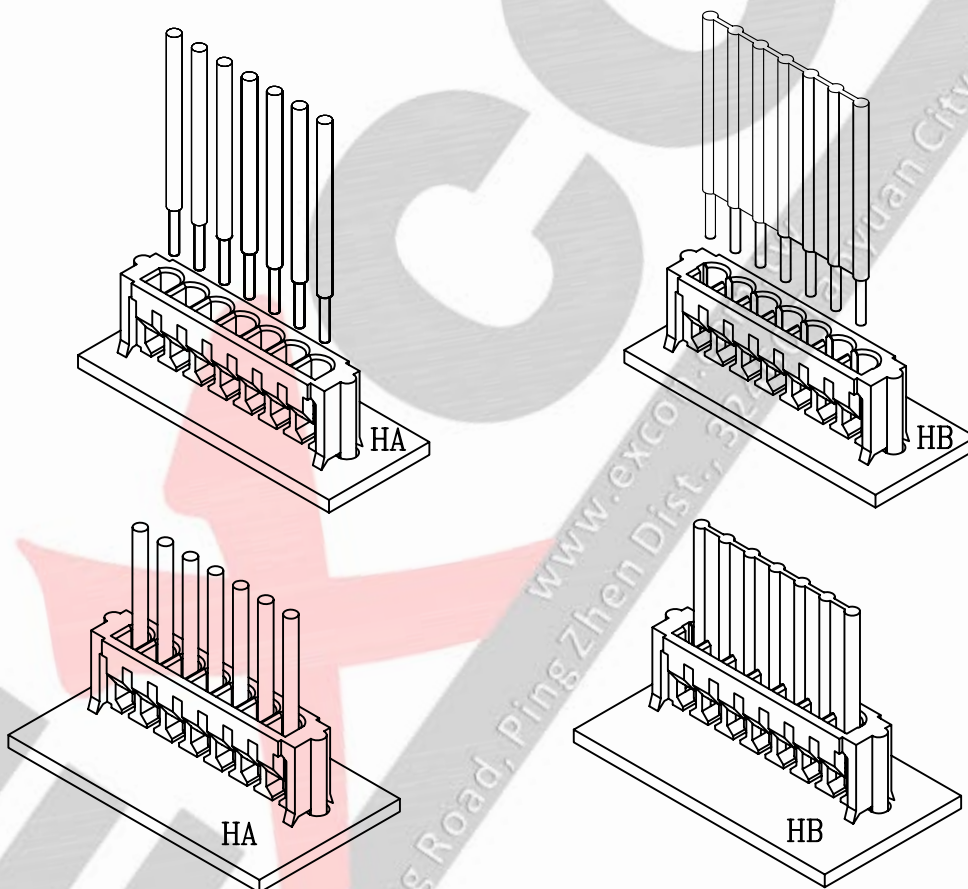


■ Specifications

1. Current rating: 1A AC/DC
2. Voltage rating: 125V AC/DC
3. Withstand voltage: 500V AC/minute
4. Insulation resistance: 1000M Ω min
5. Contact resistance: 20m Ω max
6. Temperature range: -25°C to +105°C
7. Applicable PC board thickness: 0.8~1.6mm(.031"to .063")
8. Applicable wires: AWG#28-#26
Insulation O.D.: 0.6-1.2mm
9. Circuits: 2~15 circuits available



Part Code Information:

2012-WW XX YY

① ② ③ ④

① Series Name

② Circuits Number

02~15

00 For Terminal

③ Product Type

HA=Housing

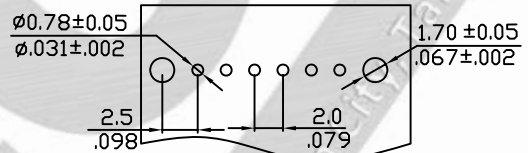
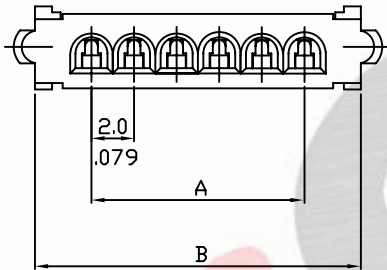
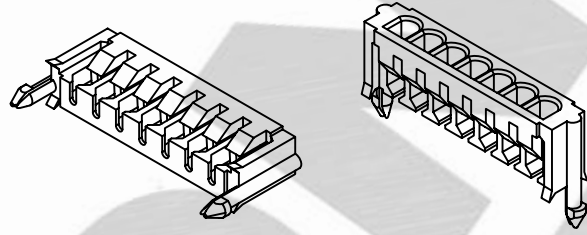
HB=Housing

④ Material/Finishing/Color

001=NY66 UL94V0,Natural Color

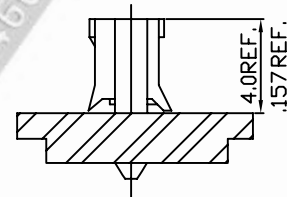
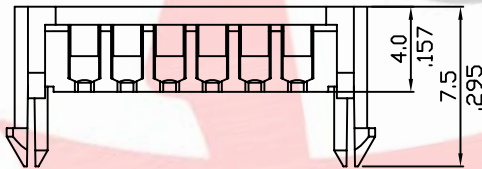
Housing (A-type)

1. Part No.: 2012xxHA001
2. Part Name: 2012 Housing
3. Material: Nylon 66 UL 94V0
Pin: Brass bronze, Plated tin
4. Color: Natural



RECOMMENDED PCB LAYOUT

(PCB T=0.8~1.6mm)
(PCB T=.031"~.063" in)



Mating Dimensions

Ordering Information and Dimensions:

Part No.	Circuits	Dim A	Dim B	Part No.	Circuits	Dim A	Dim B
201202HA001	2	2.0(.079)	7.2(.283)	201210HA001	10	18.0(.709)	23.2(.913)
201203HA001	3	4.0(.157)	9.2(.362)	201211HA001	11	20.0(.787)	25.2(.992)
201204HA001	4	6.0(.236)	11.2(.441)	201212HA001	12	22.0(.866)	27.2(1.071)
201205HA001	5	8.0(.315)	13.2(.520)	201213HA001	13	24.0(.945)	29.2(1.150)
201206HA001	6	10.0(.394)	15.2(.598)	201214HA001	14	26.0(1.024)	31.2(1.228)
201207HA001	7	12.0(.472)	17.2(.677)	201215HA001	15	28.0(1.102)	33.2(1.307)
201208HA001	8	14.0(.551)	19.2(.756)				
201209HA001	9	16.0(.630)	21.2(.835)				

Part Code Information:

2012-WW XX YYY

① ② ③ ④

① Series Name

② Circuits Number

02~15

③ Product Type

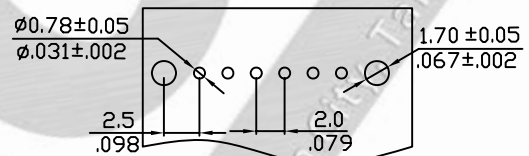
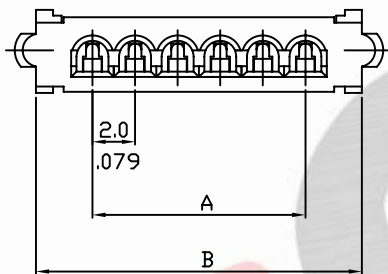
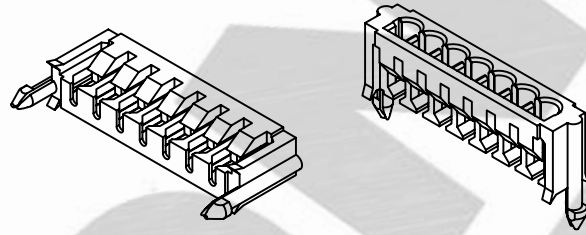
HA=Housing A Type

④ Material/Finishing/Color

001=NY66 UL94V0,Natural Color

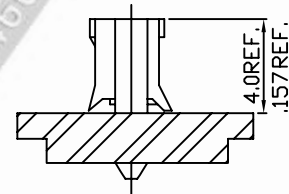
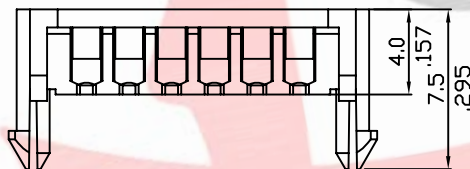
Housing (B-type)

1. Part No.: 2012xxHB001
2. Part Name: 2012 Housing
3. Material: Nylon 66 UL 94V0
Pin: Brass bronze, Plated tin
4. Color: Natural



RECOMMENDED PCB LAYOUT

(PCB T=0.8~1.6mm)
(PCB T=.031"~.063" in)



Mating Dimensions

Ordering Information and Dimensions:

Part No.	Circuits	Dim A	Dim B	Part No.	Circuits	Dim A	Dim B
201202HB001	2	2.0(.079)	7.2(.283)	201210HB001	10	18.0(.709)	23.2(.913)
201203HB001	3	4.0(.157)	9.2(.362)	201211HB001	11	20.0(.787)	25.2(.992)
201204HB001	4	6.0(.236)	11.2(.441)	201212HB001	12	22.0(.866)	27.2(1.071)
201205HB001	5	8.0(.315)	13.2(.520)	201213HB001	13	24.0(.945)	29.2(1.150)
201206HB001	6	10.0(.394)	15.2(.598)	201214HB001	14	26.0(1.024)	31.2(1.228)
201207HB001	7	12.0(.472)	17.2(.677)	201215HB001	15	28.0(1.102)	33.2(1.307)
201208HB001	8	14.0(.551)	19.2(.756)				
201209HB001	9	16.0(.630)	21.2(.835)				

Part Code Information:

2012-WW XX YYY

① ② ③ ④

① Series Name

② Circuits Number

02~15

③ Product Type

HB=Housing B Type

④ Material/Finishing/Color

001=NY66 UL94V0,Natural Color